



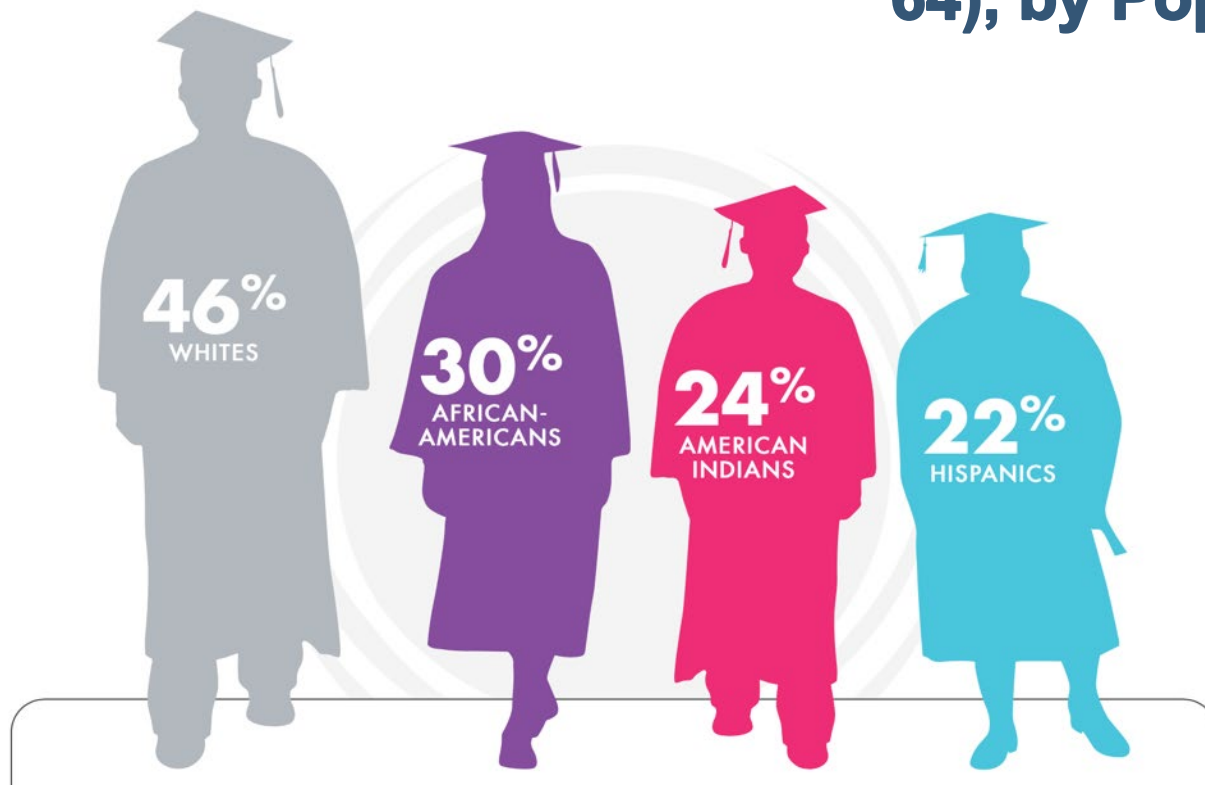
BOARD of REGENTS
STATE OF LOUISIANA

PATHWAY TO PROSPERITY

Closing Equity Gaps

THE EQUITY IMPERATIVE

Degree Attainment Rates Among U.S. Adults (Ages 25-64), by Population Group



Current Percentages Holding at Least a Two-Year Degree

CREDENTIALS COUNT

11.5 of the 11.6 million jobs created after the recession in the U.S. were filled by individuals who hold a credential of value.



GEORGETOWN UNIVERSITY

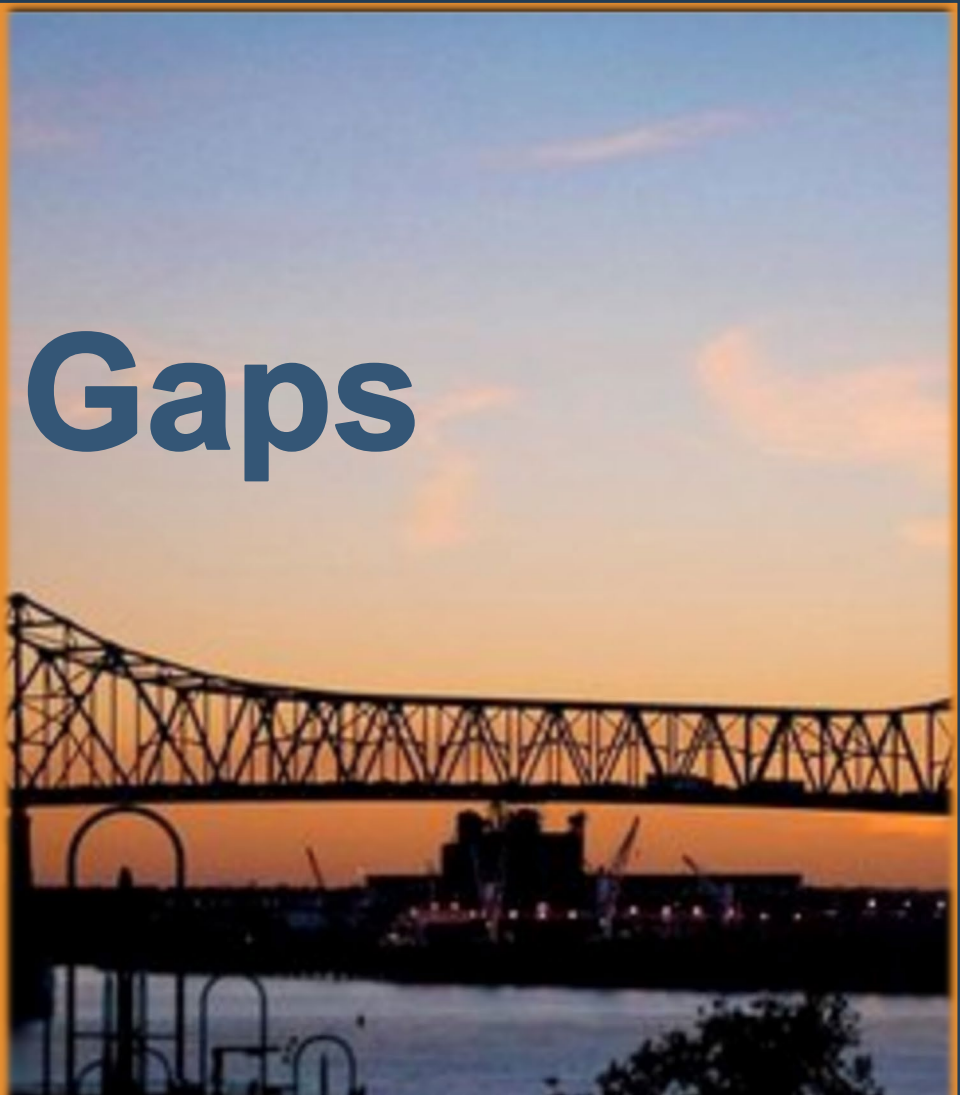


Center
on Education
and the Workforce

McCourt School of Public Policy

America's Divided Recovery: *College Haves and Have-Nots*, 2016

Equity Gaps



GAP

45,000

40,000 Annual
Credentials
Produced in
2018

Double the Numbers

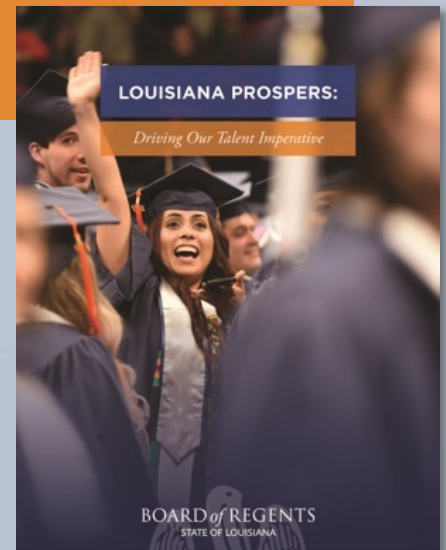
GOAL:

85,000

Annual Credentials
Produced in 2030



BOARD of REGENTS
STATE OF LOUISIANA



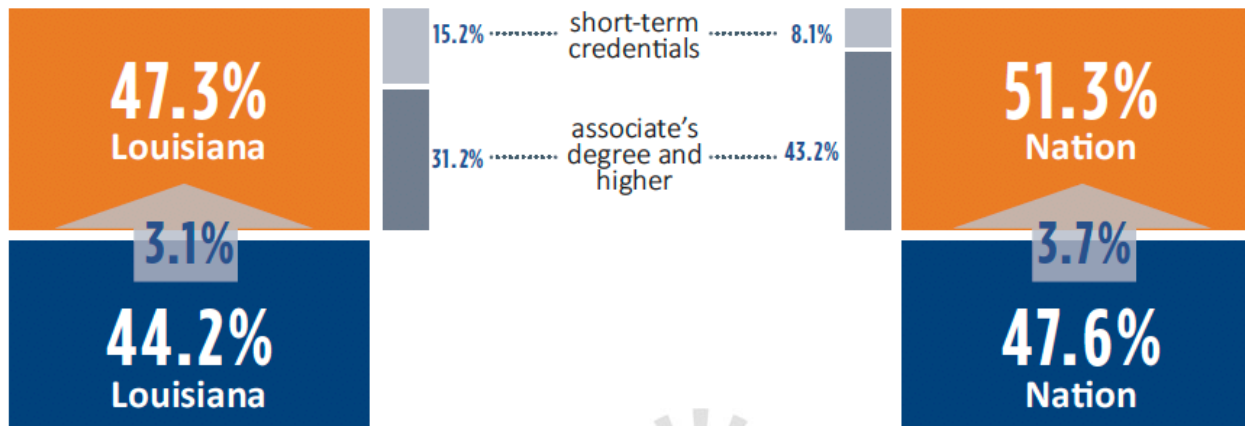
LOUISIANA'S CHALLENGE

EDUCATIONAL ATTAINMENT

State Increased but Lagging the Nation

GOAL: 60% x 2030

Though Louisiana has made progress in attainment, the national average increased by a larger percentage. To develop talent to its highest potential, we must close this gap.



By 2020, the Georgetown Center projections indicate that 65% of jobs nationally, and 56% of jobs in Louisiana, will require education beyond a high school diploma.

It is estimated that 85% of jobs that will be available in 2030 have not yet been created or even imagined.



BOARD of REGENTS
STATE OF LOUISIANA

THREE PART FOCUS



BOARD of REGENTS
STATE OF LOUISIANA

INCREASING ATTAINMENT
MEANS THE STATE MUST:



expand access to and
success in completing
postsecondary education



eliminate persistent and
damaging equity gaps



significantly increase the
education level for adults

LOUISIANA'S EQUITY GAP

Of 100 Incoming 9th Graders



78

Will Graduate High School



45

Will Enter College Immediately After Graduation



18

Will Earn a Postsecondary Credential



Of 100 African American 9th Graders



73

Will Graduate High School



40

Will Enter College Immediately After Graduation



9

Will Earn a Postsecondary Credential



Today's Student

Traditional to Post-Secondary



First in Family



Foster Youth



Working Parent in Need of Training



Adults in Rural Areas



Incarcerated/
Formerly
Incarcerated



Veterans



Talent Commitment

Double the number of college completions by 2030.



Educate

Dual Enrollment

Improved
Outcomes

Affordable Access



Innovate

New Systems of Learning -
Worked-Based Learning

Clear Pathways to Success

Research and Development



Collaborate

Integrated Relationships &
Alignment: PK-12, Higher Ed
and Workforce

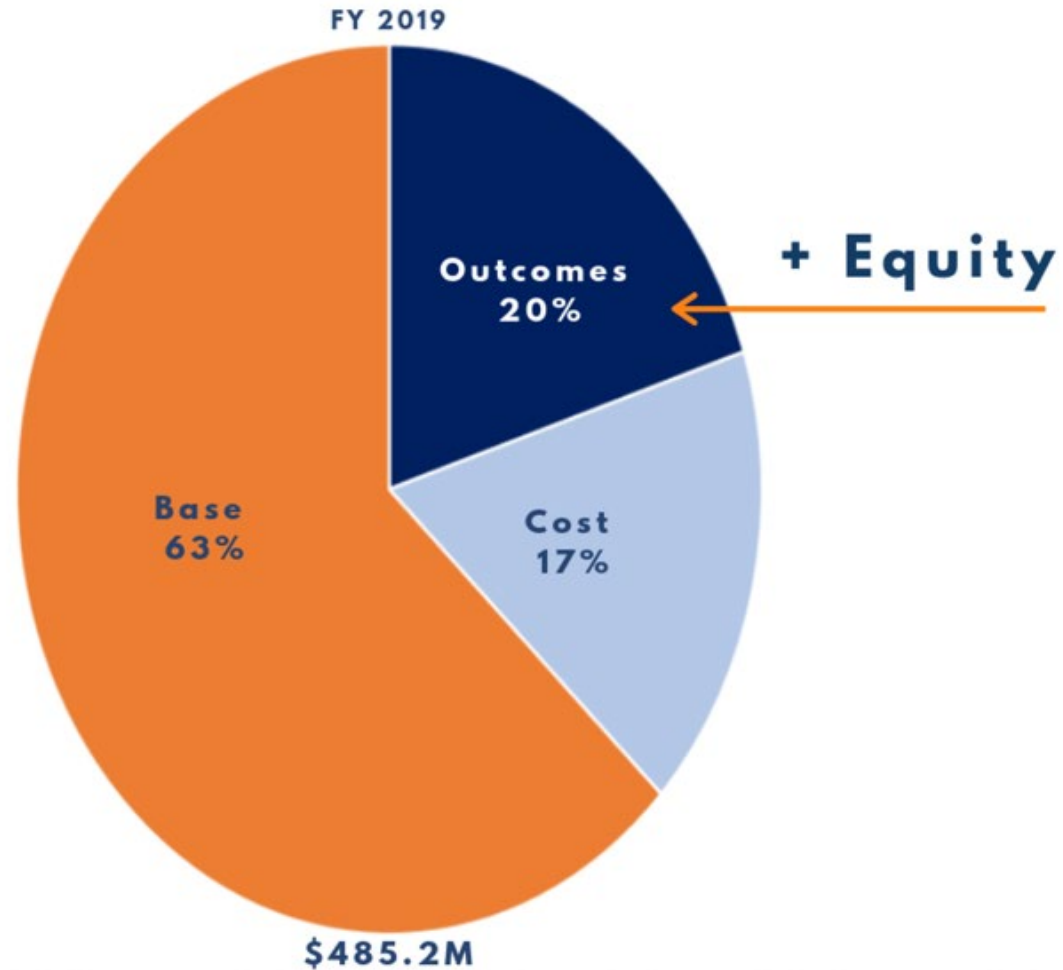
Public - Private Partnerships

Louisiana Prospers



BOARD of REGENTS
STATE OF LOUISIANA

OUTCOMES-BASED FUNDING FORMULA



WORKFORCE AND EDUCATION SUBCABINET



WORKFORCE AND EDUCATION SUBCABINET



Return On Investment



Provides an extra **\$5,414** in cumulative personal income per capita

Produces **\$535M** in additional sales taxes

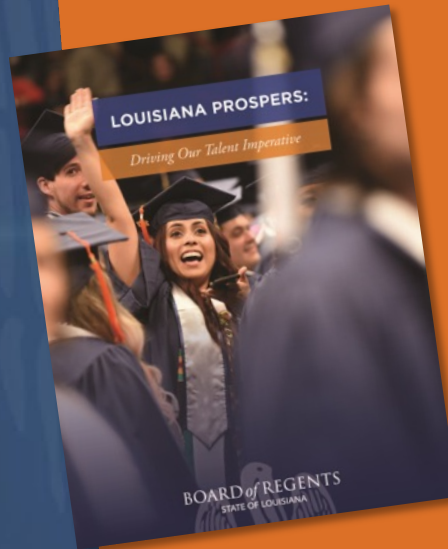


Yields an estimated **\$3.4B** in state revenues; including an estimated **\$794M** income taxes

Savings projections of **\$1.26B** in Medicaid costs and **\$206M** corrections costs



MOODY'S INVESTORS SERVICE RELEASED A REPORT TOUTING THE LOUISIANA BOARD OF REGENTS' MASTER PLAN TO IMPROVE EDUCATION ATTAINMENT AS A "CREDIT POSITIVE" FOR OUR STATE'S COLLEGES AND UNIVERSITIES.



THE MASTER PLAN'S GREATER FOCUS ON EDUCATIONAL ATTAINMENT AND EQUITY IS CREDIT POSITIVE FOR THE STATE'S DIVERSE COLLEGES AND UNIVERSITIES WHILE AN ADJUSTED OUTCOMES-BASED FORMULA MAY BENEFIT SOME OF THE STATE'S PUBLIC COLLEGES AND UNIVERSITIES AND LEAD TO FUNDING CUTS FOR OTHERS, AN INCREASE IN GRADUATES WHO JOIN THE WORKFORCE HAS THE POTENTIAL TO CREATE A MORE FAVORABLE STATE FUNDING ENVIRONMENT. THIS IS ESPECIALLY IMPORTANT SINCE CUTS IN STATE SUPPORT FOR HIGHER EDUCATION SINCE 2009 HAVE NOT BEEN RESTORED AT LEVELS SIMILAR TO OTHER STATES.

A photograph of a classroom scene. A male teacher, wearing a brown sweater with orange and white stripes on the sleeves and blue jeans, stands at the front of the room. He is pointing his right hand towards a whiteboard on the wall. He holds a piece of paper in his left hand. The whiteboard contains handwritten text in cursive, which is partially obscured by a large blue text overlay. In the foreground, several students are seated at desks, viewed from behind. One student on the left has their hand raised. Another student on the right is also raising their hand. The overall atmosphere is that of an active classroom discussion.

Questions?

Thank You

Kim Hunter Reed

Commissioner of Higher Education, Louisiana Board of Regents

Email: kim.reed@laregents.edu

Twitter: [@KimHunterReed](https://twitter.com/KimHunterReed)

[@la_regents](https://twitter.com/la_regents)

