

APPROVED

January 10, 2022

Item #D1
January 10, 2022

**FISCAL YEAR 2023 HIGHER EDUCATION BUDGET RECOMMENDATIONS
FOR OPERATIONS, GRANTS, AND CAPITAL IMPROVEMENTS**

Submitted for: Action.

Summary: This item recommends approval of the Fiscal Year 2023 Budget Recommendations for higher education operations, grants, and capital improvements.

Action Requested: That the Illinois Board of Higher Education approve the Fiscal Year 2023 Budget Recommendations for operations, grants, and capital improvements.



FISCAL YEAR 2023 HIGHER EDUCATION BUDGET RECOMMENDATIONS FOR OPERATIONS, GRANTS, AND CAPITAL IMPROVEMENTS

OVERVIEW

The Illinois Board of Higher Education is pleased to present its Fiscal Year 2023 Budget Recommendations that reflect the vision, goals, and strategies of the new higher education strategic plan adopted by the IBHE in June 2021 and subsequently endorsed by the Illinois Community College Board in August 2021 and by the Illinois Student Assistance Commission in September 2021.

Investing in [A Thriving Illinois: Higher Education Paths to Equity, Sustainability, and Growth](#)



Higher education has always been a path to a better future, for individuals, communities, and the entire state of Illinois. Our world-class higher education system has changed millions of lives and made our state an economic powerhouse. But to sustain a thriving Illinois, we must create a more equitable reality. For too long African American, Latinx, low-income, rural, and working adult students have been left behind. Yet Illinois' economic growth and educational equity are inseparable.

We grounded the new strategic plan, *A Thriving Illinois: Higher Education Paths to Equity, Sustainability, and Growth* in the idea that we can't as a state thrive without a strong, equitable higher education system.

A Thriving Illinois laid out 25 strategies designed to achieve the three overarching goals:

- Equity: Close the equity gaps for students who have been left behind;
- Sustainability: Build a stronger financial future for individuals and institutions; and
- Growth: Increase talent and innovation to drive economic growth.

The FY 23 budget recommendations highlighted below support the implementation of *A Thriving Illinois* to build broad, sustainable, and equitable paths to a prosperous future for every individual, family, and community across Illinois.



Close Equity Gaps for Students Who Have Been Left Behind

- **Strategy 1: Support the ongoing learning renewal of students and the systemic implementation of evidence-informed student support practices.** The pandemic disproportionately impacted students from low-income families and families of color,

exacerbating the factors that place students at risk. This is true for students in elementary and secondary as well as postsecondary education. The Governor has dedicated \$72M, about half of the federal Governor's Emergency Education Relief fund, to higher education. ICCB and IBHE have distributed these dollars to institutions to provide academic and social emotional supports to students at risk of not enrolling, continuing, or completing higher education. Universities and colleges have also stepped in to provide tutoring to K-12 students most impacted by the pandemic. Through a partnership with the Illinois State Board of Education, IBHE received \$25M in federal funds to build a network of 5 public universities and through the ICCB, 2 community colleges, that will train college students to tutor K-12 students in local districts. **These efforts will continue into Fiscal Year 23, and IBHE recommends maintaining appropriations.**

- **Strategy 3: Implement equitable talent management to increase and retain faculty, staff, administrators, and trustees of color.** There are significant gaps in representation of faculty, staff, administrators, and trustees of color in higher education. Illinois has long supported the Diversifying Faculty in Illinois (DFI) program to provide fellowships to students of color working on their graduate degrees who make a commitment to work in Illinois higher education. Today, over 100 qualified candidates are turned away each year from the DFI program because of insufficient funding. **The IBHE FY 23 budget recommends an increase of \$0.5M to the Diversifying Faculty in Illinois program to provide fellowships to approximately one-third (35) of those who are turned away each year.**
- **Strategy 4: Attract working adults through outreach and supports specifically for them.** While the community colleges have long served working adults, the Workforce Equity Initiative expands one-year or less credit and/or non-credit workforce training opportunities in high-need communities with identified workforce gaps. Funds support community colleges that focus on improving workforce equity for African Americans. The Innovative Bridge and Transitions (IBT) provides funding opportunities to support the seamless transition of students between education systems and employment. There are over 100 WEI programs offered by 17 participating colleges throughout the state. To date, there have been 5,221 students enrolled, including 3,855 African American students, and 2,581 credentials have been completed. **The IBHE FY 23 budget recommends continuing this funding at its current level of \$23.8M.**
- **Strategy 8: Expand the role of college access and support models to positively impact college-going and completion rates.** A *Thriving Illinois* highlighted near-peer mentoring and other support models, like the ISACorps, in helping improve enrollment, retention, and completion particularly for low-income students, first-in-their-families to go to college, and students of color. **The IBHE FY 23 budget recommends an additional \$5.0M in state funds to make up for the loss of federal funds that currently support the ISACorps and other ISAC operations.**



Build a stronger financial future for individuals and institutions

- **Strategy 1: Invest in public higher education through an equitable, stable, and sufficient funding system.** A *Thriving Illinois* calls for increased investment in our state's public higher education institutions through a system that is equitable, stable, and sufficient. While the community college system has a funding model, that is not true for public universities. This strategy outlines a set of principles that should be included in any new funding system. This year legislation created the [Commission on Equitable Public University Funding](#), charged with developing a funding formula that is equitable, adequate, and stable and that fulfills the principles outlined in Sustainability Strategy #1 of A *Thriving Illinois*. While the Commission recommendations are due by July 1, 2023, the IBHE FY 23 budget recommendations take a first step toward adequate, equitable, and stable funding. To move toward equitable public university funding while the Commission is underway, **the IBHE is recommending a \$58M (5%) increase for public universities to focus on serving low-income students and that it be distributed based on the percent of Pell students served. In addition, IBHE is recommending a \$16M (5%) increase for community colleges, adult education, and career and technical education.**
- **Strategy 2: Invest an additional \$50M each year to reach \$1 billion in MAP funding over 10 years.** MAP is one of the most powerful tools we have to help low-income, students of color, working adults, and rural students enroll in and complete college. However, funding has not kept up with the need and thousands of students do not receive a grant because funds run out. For students who do receive a grant, loss in purchasing power means that a MAP grant covers only 33% of average tuition and fees at public universities and 38% at community colleges. **The IBHE FY 23 budget recommendations call for a \$50M increase in MAP funds.**
- **Aligned with Strategy 6 to implement creative options for building family savings for college, funding College Illinois! ensures the State meets commitments already made to families saving for college.** The State's pre-paid tuition program has an unfunded liability as of June 30, 2021 of \$238 million as tuition and fee costs have exceeded contract costs and program investments. The General Assembly appropriated \$20M in FY 22 to begin to offset this liability. ISAC has estimated that an annual appropriation of \$30M will keep the liability from growing and ensure all contract holders receive their benefits. **The IBHE is recommending in FY 23 an additional \$10M appropriation to bring the annual College Illinois! contribution to \$30M.**



Increase talent and innovation to drive economic growth

- **Strategy 3: Align the state's economic development and higher education strategies, ensuring both address historic inequities.** A *Thriving Illinois* calls for IBHE to conduct an annual supply and demand analysis to identify areas of economic and talent needed to

inform institutional and IBHE recommendations and approvals. **The FY 23 budget recommends \$0.2M to support IBHE in developing and conducting this analysis.**

- **Strategy 4: Encourage high school graduates to enroll in the Illinois higher education system and keep talent here.** Forty-seven percent of 2019 Illinois high school graduates who went to a four-year institution enrolled out-of-state. Although this is down one percentage point from the 2017 high school graduating class, we can do more to keep Illinois graduates in Illinois. AIM HIGH is a hybrid need/merit-based scholarship pilot program that allows public universities to attract and retain students. Universities have used the flexibility allowed in the program to also embed equity. ISAC's report on the second year of this pilot program found that of the over 10,600 recipients, 60% were Pell eligible. Approximately 55% of the recipients were White, 15% Latinx, and 17% African American. Maintaining state support for AIM HIGH will enable these students to continue to receive awards. **The IBHE FY 23 budget recommendation is to maintain AIM HIGH scholarship funding at \$35M.**
- **Strategy 5: Establish a consortium of community colleges and universities to better serve the incumbent early childhood workforce.** The IBHE and ICCB have come together to establish the [Early Childhood Access Consortium for Equity](#) to streamline, coordinate, and improve access to credentials and degree completion for the incumbent early childhood workforce, as outlined in [P. A. 102-0174](#). All public universities and community colleges, plus private universities who wish to join the Consortium will ensure that students can fully transfer their Associate of Applied Science in early childhood degree to a baccalaureate program; courses and support services will be offered at times and in ways that are convenient for working adults; and between now and September 30, 2024, eligible students can access scholarships that will cover total cost of attendance. Institutions will also receive funds to support curriculum development and adding dedicated coaches/mentors to ensure students have the support they need to succeed. Federal funds dedicated by Governor JB Pritzker and the Illinois Department of Human Services are supporting this initiative. **The IBHE FY 23 budget recommends \$200 million in federal appropriation authority to continue implementation of the Consortium and scholarships.**
- **Strategy 7: Enhance access to educator preparation programs.** Illinois is facing a dire educator shortage; solutions are multifaceted and exist throughout the educator pipeline. Access to educator preparation programs is one of the areas of focus in *A Thriving Illinois*, with particular emphasis on efforts to recruit and retain educators of color. Two programs within the ISAC budget help address one of the barriers to access: affordability. The **Minority Teacher of Illinois Scholarship** program provides an annual scholarship for up to four years for minority students who commit to teaching in a preschool, elementary, or secondary school where over 30% of the students are minorities. The Teacher Loan Forgiveness Program provides up to an additional \$5,000 in loan repayment help for teachers teaching in Illinois who qualify for the federal teacher loan forgiveness program. **The IBHE FY 23 budget recommends increasing funding by a total of \$2.8M to expand the number of students served and provide larger awards.**
- **Provide \$1.5M to support IMSA, student outreach and other services.** The proposal includes a \$0.9M (5%) increase for the Illinois Mathematics and Science Academy to meet

students' social-emotional needs and a \$0.6M increase across agencies to invest in student outreach, strategic plan implementation, and essential data systems.

Budget Recommendation Summary

As summarized in Figure 1 below, the Board is recommending a General Funds operating appropriation increase of \$139.1 million as well as an incremental \$17.4 million to cover the amounts certified by the State University Retirement System and contributions to the community college health insurance program for retirees.

The Board's capital priority is to have the projects appropriated through the state's *Rebuild Illinois* capital program launched and those underway expeditiously completed. IBHE is recommending that all previously funded projects be reappropriated in FY 23, but is not making recommendations for any new capital projects.

Figure 1: IBHE FY 23 General Funds Budget Recommendations
(\$ in thousands)

Higher Education* \$ in Thousands	FY22 Enacted Approp	FY23 Recommend- ation	\$ Change	Percentage Change from FY22
Public Universities	\$1,158,386	\$1,216,783	\$58,397	5.0%
Community Colleges**, Adult Ed, Career Tech Ed	210,797	221,337	10,540	5.0%
Monetary Award Program	479,566	529,566	50,000	10.4%
AIM HIGH	35,000	35,000	-	0.0%
College Illinois! Payment	20,000	30,000	10,000	50.0%
ISAC Operations & Outreach	6,998	12,000	5,002	71.5%
ISAC Minority Teachers Scholarships	1,900	4,200	2,300	121.1%
ISAC Teacher's Repayment Program	440	975	535	121.6%
IBHE Diversifying Higher Education Faculty in IL	1,457	1,982	525	36.0%
All Other General Revenue	78,863	80,657	1,793	2.3%
Total General Revenue	\$1,993,406	\$2,132,499	\$139,093	
Actual Change from F22 Appropriation		\$139,093		7.0%

*Excludes the State Universities Retirement System

**Excludes an increase of \$5.3M in community college funding from other state funds

Figure 2: IBHE FY23 SURS Recommendations
(\$ in thousands)

State Universities Retirement System** \$ in Thousands	FY22 Enacted Appropriation	FY23 Certification	Percentage Change from FY22
State Contribution	\$2,101,279	\$2,118,567	0.8%
Community College Health Insurance (CIP)	4,834	4,938	2.1%
Total Contribution	\$2,106,113	\$2,123,505	0.8%
Change from F22 Appropriation		\$17,392	

**SURS is not included in Total General Revenue table above

FISCAL YEAR 2023 RECOMMENDATIONS FOR OPERATIONS AND GRANTS

PUBLIC UNIVERSITIES

Fiscal Year 2023 Recommended Funding: \$1,216,783

The Board is recommending a \$58.4 million (5%) increase for Fiscal Year 2023.

IBHE has kept at the forefront of its budget recommendations closing equity gaps in access, persistence, and completion and recognizes that Universities are called on to provide additional academic and social-emotional supports to ensure students' success and resources to meet their specific needs, particularly with low-income and students of color disproportionately impacted by COVID.

IBHE recognizes that a new formula for funding public universities that drives toward adequate, equitable, and stable funding will result from the [Commission on Equitable Public University Funding](#) and will be based on the principles in [A Thriving Illinois](#). The allocation proposed for Fiscal Year 2023 is a one-year approach that takes a step toward equitable allocation of **new** resources, as Figure 3 shows.

IBHE is recommending that the additional \$58.4 million be allocated using a model that takes a step toward equity. The allocation is based on each institution's **percentage** and **number** of Pell students in its undergraduate student body, with more per Pell student allocated to those institutions serving a higher percentage of Pell students. The allocation model is detailed in Appendix Table G-12.

*Figure 3: Fiscal Year 2023 Recommended Budget Public University Allocation
(\$in thousands)*

Public University Allocation	FY22 Appropriation	New \$ Allocation	FY23 Recommendation	% Change from FY22
CSU	35,019	2,385	37,404	7%
EIU	41,924	2,333	44,257	6%
GSU	23,194	2,785	25,979	12%
ISU	69,619	4,728	74,348	7%
NEIU	35,567	4,043	39,610	11%
NIU	87,804	7,209	95,013	8%
SIU	193,631	7,674	201,305	4%
U of I	622,040	22,563	644,603	4%
WIU	49,588	4,676	54,264	9%
Total	1,158,386	58,397	1,216,783	5%

Does not include statutory calculation for performance funding adjustment

The allocation shown above is presented before the statutorily-required performance funding

adjustment, shown in Tables 4A and 4B in Appendix G. The Board is not recommending implementation of the performance funding adjustment.

The Board's FY 23 budget recommendation reflects its efforts to begin to provide resources aligned to student needs and for institutions to close equity gaps.

ILLINOIS COMMUNITY COLLEGE BOARD

Fiscal Year 2023 General and Personal Property Replacement Tax (PPRT) Recommended Funding: \$370,951,600

Community College Grants

Fiscal Year 2023 General and PPRT Recommended Funding: \$277,630,000

IBHE recommends a \$13,220,500 increase (5%) in Fiscal Year 2023 funding for the Base Operating, Equalization, and City Colleges of Chicago community college grants. Specifically, IBHE recommends FY 23 funding levels of:

- Base Operating (General Funds): \$78,088,700 an increase of \$3.7 million
- Base Operating (Personal Property Replacement Tax Fund): \$110,848,500, an increase of \$5.3 million
- Equalization: \$74,764,100, an increase of \$3.6 million
- City Colleges of Chicago: \$13,928,700 an increase of \$663,300

Community colleges are central to achieving the goals of *A Thriving Illinois*. Community Colleges continue to play a vital role in meeting the state's workforce needs. The Illinois Community College Board recently released a new [economic impact analysis](#) that found community colleges contribute more than \$3.5 billion and 43,000 jobs annually to the Illinois economy. The study also found that community colleges engaged with nearly 9,800 unique employers, which is directly aligned with Growth Strategy #3 to align the state's economic development and higher education strategies.

Illinois community colleges enrolled over 230,000 students in Fall, 2020, about 12% of whom were African American and 26% Latinx. Community colleges serve many rural students and low-income students. Investing in community colleges is essential to Illinois closing its equity gaps. Colleges will also need enhanced resources to meet the academic and social-emotional needs of students returning to school and ensure they stay on track.

Adult Education and Postsecondary Career and Technical Education

Fiscal Year 2023 Recommended Funding: \$54,555,000

IBHE recommends a 5% increase (\$2.6 million) in Fiscal Year 2023 for ICCB adult education and career and technical education programs administered under the Workforce Innovation and Opportunity Act and the Strengthening Career and Technical Education for the 21st Century Act, respectively. Specifically, this recommendation includes:

- Basic grants: \$23,783,600, increase of \$1.1million (5%)
- Performance Based grants: \$11,798,500, increase of \$561,800 (5%)
- Career and Technical Education Programs: \$18,972,900, increase of \$903,500 (5%)

Adult Education programs provide critical services to adults with less than a 12th grade education,

adults for whom English is a second language, and high school and adult students pursuing career and technical (CTE) training through integrated education and training programs. CTE programs offered by the colleges provide students with opportunities in over 100 career & technical fields. These programs include integrated academic and technical instruction, work-based learning, dual credit opportunities and potential for continuing education at the baccalaureate level. This state funding provides the required maintenance of effort to qualify for federal funds. Serving adults and providing career and technical education opportunities are directly aligned with Equity Strategy #4 to attract and serve working adults.

ICCB Other Grants

IBHE recommends Fiscal Year 2023 grant funding at the levels outlined below. ICCB's many grants support the goals outlined in *A Thriving Illinois*, including efforts to close equity gaps, serve working adults, and invest in talent needed to grow the state's economy

- **Early Childhood Programs** grants will support the [Early Childhood Access Consortium for Equity](#) a newly launched consortium of community colleges, public universities, and private universities that offer early childhood programs. The purpose of the Consortium is to increase credential and degree attainment for the incumbent early childhood workforce by smoothing, coordinating, and improving pathways, both for students upskilling to an associate degree and those with an associate degree transferring to a four-year institution. Each sector has a goal for enrollment, persistence, and/or completion of members of the incumbent workforce to be achieved by September 30, 2024. Community colleges will recruit and provide support for early childhood workers to earn additional Gateways credentials and associate degrees in early childhood as well as partner with university Consortium members to streamline the path to four-year degrees. In addition to the funds recommended for ICCB, IBHE is recommending funding for ISAC to support scholarships for students participating in the Consortium programs and for IBHE to support development of the Consortium and funding for public and private university members. The Consortium is funded through the Illinois Department of Human Services federal grant funds. **\$35,000,000, federal funds**


- **Workforce Equity Initiative / Innovative Bridge and Transition Grants.** The purpose of the Workforce Equity Initiative (WEI) is to create, support, or expand one-year or less credit and/or non-credit workforce training opportunities in high-need communities focused on specific sectors with identified workforce gaps. The funds provide grant-funding opportunities to community colleges that focuses on improving workforce equity for African Americans. The Innovative Bridge and Transitions (IBT) provides funding opportunities, through a competitive process, to support the seamless transition of students between education systems as well as employment. There are over 100 WEI programs offered by 17 participating colleges throughout the state, which increases to 18 in the upcoming cycle. To date, there have been 5,221 students enrolled, including 3,855 African American students, and 2,581 credentials have been completed. illinoiswei.org: **\$23,794,400, no change**
- **Grants for Transitional and Developmental Education.** The Postsecondary and Workforce Readiness Act (PWR Act) includes Transitional Math and English coursework to increase college readiness for high school seniors. Students who successfully complete these courses jointly developed by community colleges and high schools are guaranteed placement in credit-

bearing courses at all Illinois community colleges and accepting Illinois universities. Courses emphasize authentic learning experiences aligned with careers as well as a student's life and future coursework. Additionally, under the Developmental Education Reform Act, colleges are piloting evidence-based models and scaling reform initiatives. Evaluation of Transitional Instruction and continued development of the Multiple Measures Placement Portal are critical in the success of both initiatives. All of this work moves Illinois closer to achieving Equity Strategy #7 to support implementation of developmental education reform: **\$1,000,000, no change**

- **Small College Grants.** This grant recognizes that small colleges have fixed costs, particularly in administrative areas, and that these costs should be recognized in funding: **\$584,000, no change**
- **Lincoln's Challenge Scholarships.** Students successfully completing this military-style boot camp for at-risk teens who have not completed high school are eligible to receive a scholarship to attend community college: **\$60,200, no change**
- **East St. Louis Higher Education Center.** Funding for the East St. Louis Community College Center funds higher education consortium activities at the Center. Higher education training has been offered at the Center since 1999 after the closing of Metropolitan Community College: **\$1,457,900, no change**
- **Veterans Shortfall Grants.** This grant is provided for offsetting the mandated tuition and fee waiver for veterans and national guard members enrolling at community colleges: **\$4,264,600, no change**
- **Alternative Schools Network.** This grant funds the Alternative Schools Network to re-enroll high school dropouts in a program that will ultimately allow them to receive a high school diploma: **\$3,000,000, no change**
- **High School Equivalency Testing.** The funding provides for the administration of High School Equivalency (HSE) statewide including Cook County. The purpose of HSE is to ensure eligible test-takers without a high school diploma have access to testing throughout the state and to ensure records and registration are available to Illinois test-takers: **\$1,148,000, no change**
- **P-20 Council.** The mission of the P20 Council is to make recommendations to the Governor, Illinois General Assembly, and state agencies for developing a seamless and sustainable statewide system of quality education and support, from birth through adulthood, to maximize students' education attainment, opportunities for success in the workforce, and contributions to their local communities. The Council is composed of members appointed by the Governor representing business leaders, local government, university administrators, school boards, unions, nonprofits, teachers, faculty, independent colleges, and parents: **\$150,000, no change**
- **College Bridge Programs** are grants funded through the federal Coronavirus Urgent Remediation Emergency (CURE) fund that will be used to support efforts to enroll and retain underrepresented, first-generation and low-income students that may not otherwise enroll in or return to college due to the pandemic or digital equity gaps. The project provides funding for the following: outreach and recruitment, college and career guidance and advisement,

assessment and testing, tuition assistance, assistance with prior tuition debt, technology needs and support, case management and mentoring, tutoring and technological aides, safe spaces to study and job placement into careers with family-sustaining wages. **\$10,000,000: federal funds, no change.**

- **Performance Based Funding.** Performance based funding was established by [P. A. 97-320](#) in June, 2012. For community colleges, performance funding grants are awarded not only by graduation rates, but by entered employment, certificate attainment, persistence, and success towards college level coursework: **\$359,000, no change**

ILLINOIS STUDENT ASSISTANCE COMMISSION (ISAC)

Fiscal Year 2023 Recommended General Funds: \$620,702,900

IBHE recommends a Fiscal Year 2023 General Funds budget of \$620.7 million, an increase of \$67.8 million above Fiscal Year 2022. This is comprised of an additional \$50 million for the Monetary Award Program, \$10 million for a payment to *College Illinois!*, and \$5 million for agency operations and outreach. Recommended funding for the AIM HIGH program remains at Fiscal Year 2022 levels of \$35M. Increases of \$2.8 million are also recommended for the Minority Teachers of Illinois and Teacher Loan Repayment programs.

ISAC Scholarship and Grant Programs

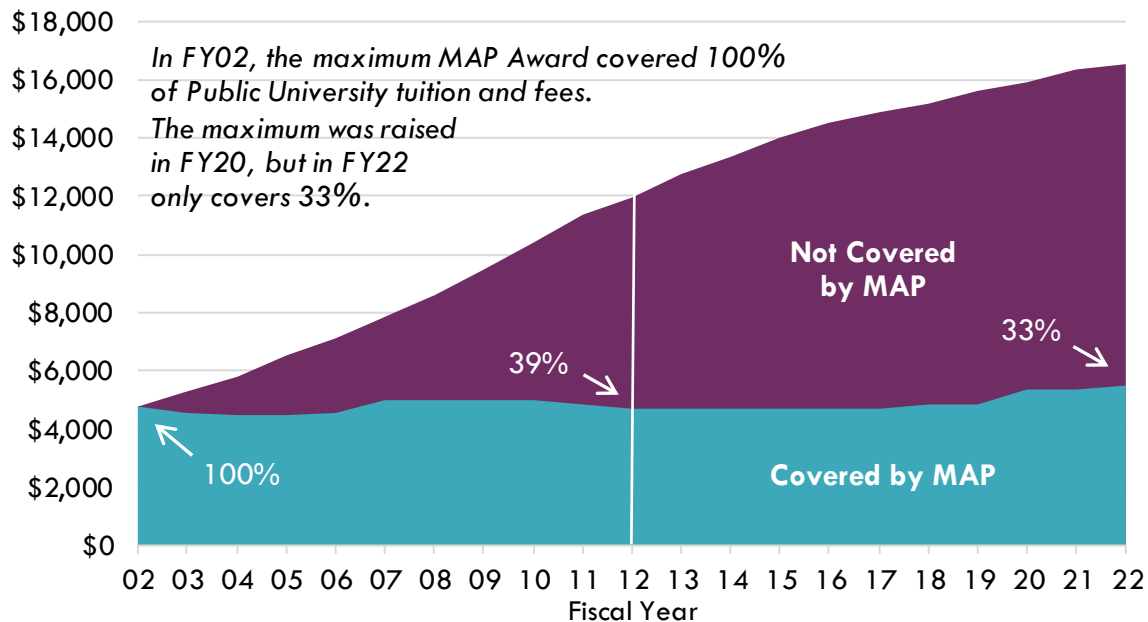
Monetary Award Program

Fiscal Year 2023 Recommended Funding: \$529,566,200

IBHE is recommending a Fiscal Year 2023 \$50 million increase in MAP. A *Thriving Illinois* calls for an annual incremental increase in MAP of \$50 million to reach total MAP funding of \$1 billion within 10 years (Sustainability Strategy #2). MAP is an important strategy to close the gap in postsecondary enrollment and completion between low-income and non-low-income students.

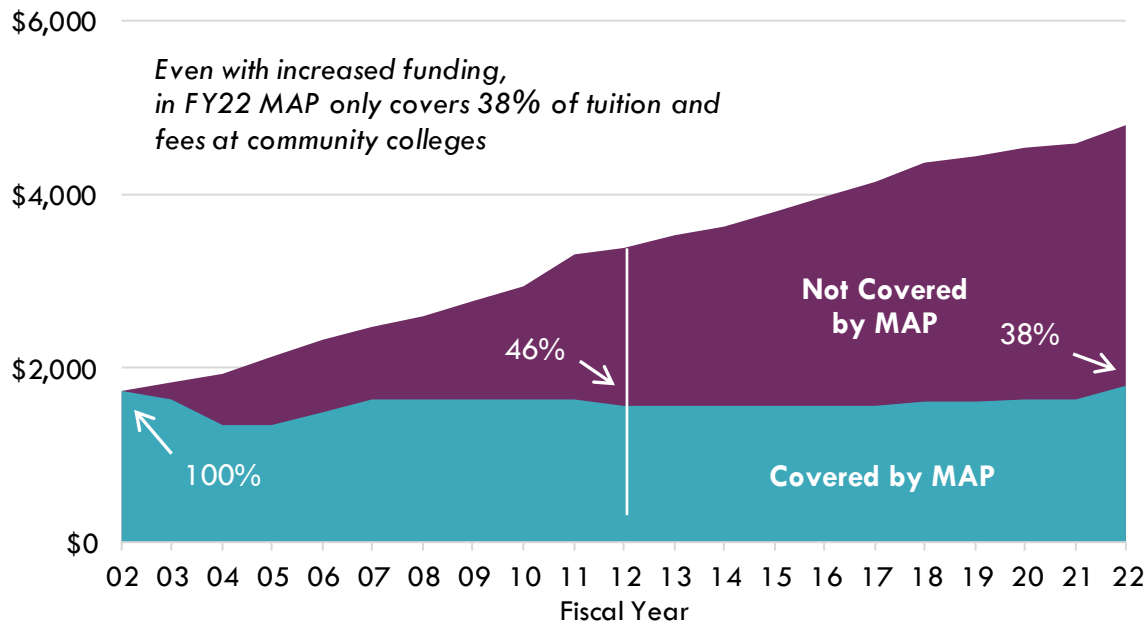
Investments in MAP have not kept up with rising costs, leading to a long decline in the proportion of tuition and fees a MAP award covered. The maximum value of an award remained almost constant from Fiscal Year 2002 until adjustments were made with a 10 percent increase in funding in Fiscal Year 2018, a 12.5 percent increase in Fiscal Year 2020, and a 6.2 percent (\$28 million) increase in Fiscal Year 2022. However, as shown in Figures 4 and 5, even with these adjustments, the proportion of public university tuition and fees covered by a MAP grant has fallen from 100 percent in Fiscal Year 2002 to 33% in Fiscal Year 2022, while at community colleges the proportion has fallen to 38%. This directly impacts low-income students' ability to afford college.

Figure 4: MAP Coverage Compared to Weighted Public University Tuition



Source: ISAC

Figure 5: MAP Coverage Compared to Weighted Community College Tuition

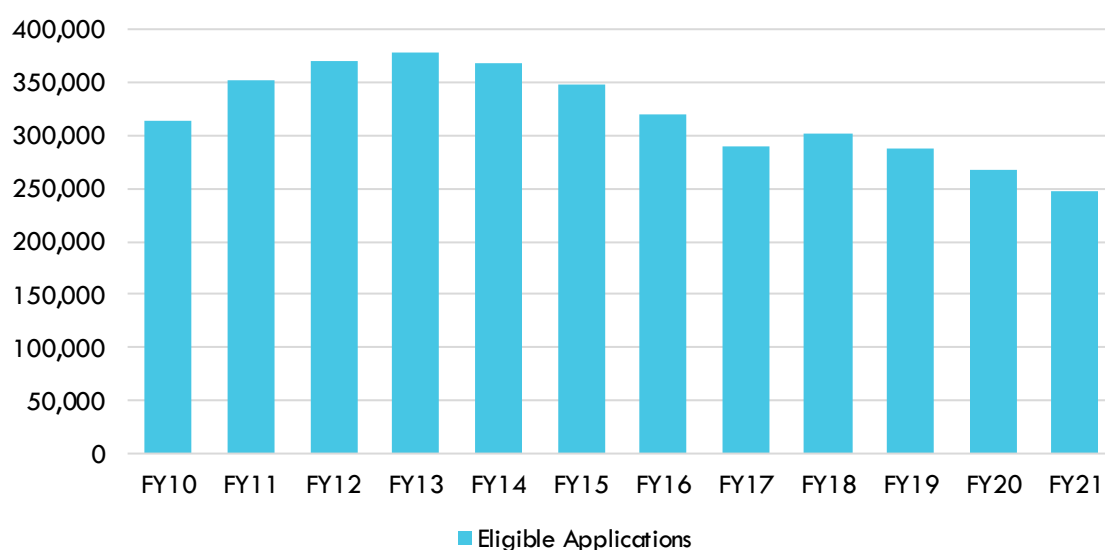


Note: This chart shows the impact on students who have no resources to contribute to college based on their federal financial aid forms (i.e. zero Estimated Family Contribution (EFC))

While 90% of eligible applicants were offered a MAP grant in Fiscal Year 2021, up substantially from prior years, those who applied after funds had run out are most often independent students and students attending a community college or other open enrollment institution.

Moreover, as Figure 6 shows, there has been a decline in the number of students eligible for MAP, since Fiscal Year 2013. Unfortunately, this is because fewer low-income families are completing the FAFSA financial aid form, which also serves as the application for MAP. If we as a state intend to close equity gaps over the next 10 years, this is a troubling pattern which must be reversed.

Figure 6: Monetary Award Program Eligibility History: Fiscal Years 2009 to 2021



AIM HIGH

Fiscal Year 2023 Recommended Funding: \$35,000,000

The IBHE Fiscal Year 2023 recommendation is to maintain AIM HIGH funding at the Fiscal Year 2022 level. This will allow current program participants to continue to receive awards.

AIM HIGH, first funded in Fiscal Year 2019, is a merit-based, pilot scholarship program. Recipients can have a maximum income of 6 times the poverty level (about \$148,000 for a family of 4). Once an AIM HIGH grant is made, the university must pledge to continue support to the student for up to four years, as long as the student meets continued eligibility requirements. In addition, Universities must match state appropriated funds at a rate based on the institution's percent of Pell students, with institutions that serve the highest proportion of low-income students having the lowest match rates, allowing more low-income students to benefit.

In an analysis of the second year of the program, ISAC found that AIM HIGH recipients were:

- 15% Latinx compared to 17% of public university undergraduates overall;
- 17% Black compared to 13% of public university undergraduates overall;
- 55% White compared to 49% public university undergraduates overall; and
- 60% Pell Eligible, including 6 schools where more than 60% of AIM HIGH students were Pell eligible. Notably, 99% of NIU's and 65% of UIUC's AIM HIGH students were Pell eligible.

The analysis also found that of the 6,292 freshmen, sophomores, and juniors who received AIM HIGH in year 1, 58% returned and received AIM HIGH in year 2. An additional 28% returned to

school but did not receive an AIM HIGH scholarship, for a retention of 86%.

Universities have reported that the AIM HIGH program has been instrumental in attracting Illinois students to Illinois universities, which was one of the goals of the pilot program when it was created, and is part of Growth Strategy #4, encouraging high school graduates to enroll in Illinois.

College Illinois! State Contribution

Fiscal Year 2023 Recommended Funding: \$30 million

IBHE is recommending a \$30 million appropriation for *College Illinois!*, an increase of \$10 million.

The *College Illinois!* program is Illinois' pre-paid tuition program. Families were able to buy either community college or university contracts over time that would guarantee one or more semesters of tuition and fees when the child enters college. Benefits can be used at public or private colleges and universities in-state and out-of-state, with a value up to the mean-weighted-average tuition and mandatory fees at the state schools in the plan.

Over time, the increase in tuition and fees at Illinois institutions substantially exceeded the projections embedded in the contract cost and growth in program investments. While the program is closed to new enrollments, an unfunded liability remains. In Fiscal Year 2022, the General Assembly appropriated \$20 million for *College Illinois!* and included a supplemental appropriation for Fiscal Year 2021 of \$30 million.

The most recent actuarial valuation (through June 30, 2021) shows an unfunded liability of \$238.3M compared to \$340.3M as of June 30, 2020. Preliminary estimates are that a \$30M annual appropriation into *College Illinois!* for 10 – 13 years will ensure benefits are available for all current contract holders.

ISAC Operations and Outreach

Fiscal Year 2023 Recommended Funding: \$12 million

The Fiscal Year 2023 recommended increase of \$5 million will allow ISAC to continue its core operation of state grant and scholarship programs and outreach and education to students and families on financing college. Although this is an increase in state-funded appropriations, this does not represent an increase in spending. Rather, it makes-up for the loss in federal loan-supported revenues. Providing state support particularly for the ISACorps outreach efforts is essential to Equity Strategy #8, expanding the role of college access and support models.

ISAC is in the process of transitioning the remainder of its loan portfolio to another guaranty agency. In FY 23, no revenue is projected to be available to support ISAC operations.

ISAC Teacher Education Programs

ISAC runs several programs that support and encourage students to enter the teaching profession. With the growing teacher shortage in Illinois and a focus in *A Thriving Illinois* on enhancing access to educator preparation programs (Growth Strategy #7), IBHE is recommending increased funding in Fiscal Year 2023 for the Minority Teachers of Illinois Scholarship and the Illinois Teacher Loan Repayment Program.

Minority Teachers of Illinois (MTI) Scholarship.

Fiscal Year 2023 Recommended Funding: \$4.2 million

IBHE is recommending a \$4.2 million appropriation for the MTI program, an increase of \$2.3 million. This will increase the number of eligible students who can be served from 380 to 560 (assuming all recipients receive the maximum grant) and will increase the maximum award to \$7,500.



MTI

**Minority Teachers of Illinois
Scholarship Program**

The MTI Scholarship Program encourages academically talented minority students to pursue careers as teachers at Illinois preschool, elementary and secondary schools by providing an annual scholarship for up to four years for minority students who commit to teaching in a preschool, elementary, or secondary school where over 30% of the students are minorities. The scholarship awardee must teach one year in an Illinois school for each year of scholarship awarded or the scholarship must be paid back. In FY 21, 379 students received the scholarship.

As part of [P.A. 101-0654](#), a major education reform measure passed by the Legislative Black Caucus, the maximum scholarship was increased to \$7,500 (from \$5,000), and more priority groups were added, including bilingual teaching candidates. However, these provisions were made contingent on specific increases to the program's funding, laid out in the new law.

The IBHE recommended funding level ensures the maximum increases set out in the Act go into effect.

Illinois Teachers Loan Repayment Program

Fiscal Year 2023 Recommendation: \$975,000

IBHE is recommending an increase of \$535,000 in Fiscal Year 2023 to increase the number of teachers served by this program from 90 to an estimated 195.

The Illinois Teachers Loan Repayment Program provides awards to encourage academically talented Illinois students to teach in Illinois schools in low-income areas. If these obligations are met by a Federal Stafford loan borrower who has qualified for the federal government's loan forgiveness programs, Illinois may provide an additional matching award of up to \$5,000 to the qualifying teacher to repay their student loan debt.

Other ISAC Programs

IBHE recommends Fiscal Year 2023 funding be maintained at the levels outlined for the following ISAC grant programs:

- **Dependents Grant.** If a correctional officer employed by the Illinois Department of Corrections in a security position or an Illinois police or fire officer is killed or sustains an injury resulting in a permanent disability in the line of duty, the officer's spouse and children may receive grant assistance under this program, without regard to financial need: **\$1,237,300, no change**

- **Nurse Educator Loan Repayment.** To address the shortage of nurses and the lack of instructors to teach nursing in Illinois, the Nurse Educator Loan Repayment Program encourages longevity and career change opportunities. The program is an incentive to nurse educators to maintain teaching careers within Illinois. The annual awards to qualified nurse educators may be up to \$5,000 to repay their student loan debt and may be received for up to a maximum of four years: **\$264,000, no change**
- **Veterans' Home Medical Provider Loan Repayment** program provides for the payment of eligible educational loans as an incentive for medical providers to pursue and continue their careers at State of Illinois veterans' homes. The annual award to qualified physicians, certified nurse practitioners, registered professional nurses, certified nursing assistants and licensed practical nurses may be up to \$5,000 to repay their student loan debt. This award may be received for up to a maximum of four years: **\$26,400, no change**
- **Golden Apple Scholars of Illinois Program.** The Illinois Student Assistance Commission provides pass-through funding to the Golden Apple Scholars of Illinois Program. The program is a public-private partnership that recruits and prepares talented and diverse high school graduates for successful teaching careers in high-need schools throughout Illinois and provides scholarships to students pursuing teaching degrees: **\$6,498,000, no change**
- **Golden Apple Accelerators Program,** is a teacher residency and licensure program that will expedite the preparation of highly-qualified teachers in southern, central, and western Illinois.: **\$750,000, no change**
- **Golden Apple Scholars and Accelerations Coronavirus Urgent Remediation Emergency (CURE) Federal Fund.** Beginning in Fiscal 2022, the State of Illinois appropriated \$7.8 million of the CURE funds to the Golden Apple Foundation for Excellence in Teaching to support its two teacher preparation programs. Specifically, \$3.5 million was allocated to the Golden Apple Scholars Program; and, \$4.25 million was allocated to the Golden Apple Accelerators Program. With these funds, Golden Apple will increase the number of teachers in each program by the end of 2024 to address educational disparities exacerbated by the COVID-19 pandemic by providing robust, high-quality instruction to students across the state, with a specific focus on high poverty school districts. **\$7,752,000 federal funds, no change**
- **Grant Program for Exonerees** provides grant assistance to an individual who has been issued a pardon by the governor of the State of Illinois on the grounds of innocence of the crime for which that person had been imprisoned, or who received a certificate of innocence from a circuit court. The grant provides assistance toward tuition and mandatory fees for no more than two semesters per regular school year (the grant is not available for summer terms) for undergraduate or graduate study at Illinois public colleges and community colleges. Recipients may receive assistance for a maximum of the equivalent of four regular school years (eight semesters) of full-time enrollment: **\$150,000, no change**
- **Early Childhood Access Consortium for Equity Scholarship.** As described in the IBHE and ICCB sections, IBHE and ICCB in partnership with several other state agencies established the



Early Childhood Access Consortium for Equity to provide streamlined paths for members of the early childhood workforce to earn additional credentials and degrees. A key component of the launch of the consortium is the ECACE scholarship, which will provide total cost of attendance funding as a last dollar scholarship for members of the early childhood workforce who enroll in programs to upskill. ISAC is receiving a share of the federal funds dedicated by the Governor and the Illinois Department of Human Services to provide the scholarships: **\$120,000,000 federal funds**

- **Community Behavioral Health Care Provider Loan Repayment Program.** The program was established by [P. A. 100-0862](#) in 2019 to provide loan repayment assistance to mental health and substance use professionals working in community mental health centers in underserved or rural shortage areas. The shortage of workers in behavioral health has worsened while the need for services has increases, particularly because of the pandemic. The Illinois Department of Human Services (DHS) has partnered with ISAC and IBHE to develop strategies to increase and support the behavioral health workforce: **Up to \$5,000,000 based on funding from DHS.**

ILLINOIS MATHEMATICS AND SCIENCE ACADEMY

Fiscal Year 2023 Recommended General Revenue Funding: \$19,891,100

IBHE recommends an increase of \$947,200 (5%) in general revenue. In addition to its General Funds appropriation, IMSA's income fund is also appropriated. IBHE is recommending the Income Fund remain at the Fiscal Year 2022 level of \$3,925,000, for a total appropriation of \$23.8 million. The General Funds increase will help IMSA continue to meet the needs of its students, faculty, and staff that were particularly impacted by the pandemic.

IMSA was established in 1985 to provide a uniquely challenging education for Illinois students talented in mathematics and science and to serve as a catalyst for the advancement of STEM (Science, Technology, Engineering, and Mathematics) development and education across Illinois. The enrollment for the Fall 2021 was 651. IMSA also provides teacher professional development for educators across the state.

STATE UNIVERSITIES CIVIL SERVICE SYSTEM (SUCSS)

Fiscal Year 2023 Recommended Funding: \$1,148,200

The Fiscal Year 2023 recommends a 3% increase above the FY 2022 funding level.

SUCSS provides the statewide personnel administration system for the 12 public universities and for five affiliated state agencies, including the Illinois Board of Higher Education, the Illinois Community College Board, Illinois Student Assistance Commission, State Universities Retirement System, and the East St. Louis Community College Center. SUCSS administers, develops, and maintains the basic rules and procedures related to the employment of professional (non-academic), technical, and support staff. This includes rewriting job descriptions and auditing positions to assure appropriate alignment within the rules. The increase of \$33,500 will allow SUCSS to continue its efforts to update and streamline its position descriptions to reflect new ways of working.

ILLINOIS BOARD OF HIGHER EDUCATION

Fiscal Year 2023 Recommended General Funds: \$13,870,585

The Fiscal Year 2023 general funds recommendation for IBHE includes an increase of just under \$1 million for grants and operations to continue implementation of the strategies outlined in *A Thriving Illinois* to achieve the three goals of:

- Equity: Close equity gaps for students who have been left behind
- Sustainability: Build a stronger financial future for individuals and institutions
- Growth: Increase talent and innovation to drive economic growth

IBHE Operations

Fiscal Year 2023 Recommendation: \$3,475,900

IBHE is recommending a \$420,000 increase to the operations to support costs associated with implementing the strategic plan and meeting new statutory requirements. The funding increase would ensure that IBHE is able to conduct and implement the annual supply/demand analysis of

economic and workforce needs in Illinois in relation to academic programs (Growth Strategy #3), the private college and university capital grant program passed in *Rebuild Illinois*, and to meet costs.

IBHE Grants Supporting Students, Academic Programs and Research

Diversifying Higher Education Faculty in Illinois (DFI)

Fiscal Year 2023 Recommendation: \$1,981,500

The Board is recommending increasing the Fiscal Year 2023 appropriation by \$525,000.

IBHE provides competitive fellowships to eligible underrepresented students pursuing graduate and professional degrees at Illinois public and private institutions of higher education. Although a long-standing program, the DFI fellowship is an important effort in increasing and retaining faculty, staff, administrators, and trustees of color, Equity Strategy 3 of *A Thriving Illinois*. As a condition of their award, recipients agree upon completing their graduate degree to accept a teaching or staff position at an Illinois higher education institution or governing board, or an education-related position in a state agency for five years.

Approximately 100 eligible students are turned away each year because of a lack of funding. The recommended increase will provide funding for approximately 35 additional fellowships, for a total of nearly 140.

Common Application

Fiscal Year 2023 Recommendation: \$1,000,000

The Board is recommending Fiscal Year 2023 funding at the same level as Fiscal Year 2022.

The Board is recommending \$1 million to cover the costs of the Common App for public universities. This is the same funding level as Fiscal Year 2022, when all public universities joined the Common App, an online program that allows students to complete college applications for multiple schools with one application.



Having the Common App simplifies the college application process, helping more low-income students and first-generation college goers to access college and encouraging more students to consider Illinois public universities.

In only the first two months of the launch of the application cycle this fall, over 65,000 applications have been submitted through the Common App to Illinois public universities from Illinois residents and an additional 27,000 from out-of-state applicants.

Grow Your Own (GYO) Teacher Education Initiative

Fiscal Year 2023 Recommendation: \$2,466,300

The Board is recommending Fiscal Year 2023 funding at the same level as Fiscal Year 2022.

IBHE provides awards under the Grow Your Own Teacher Education Initiative (GYO) through Grow Your Own-Illinois. This program recruits and prepares parent and community leaders and para-

educators statewide to become effective teachers 1) in hard to staff schools serving a substantial percentage of low-income students, and 2) in hard to staff teaching positions in schools serving a substantial percentage of low-income students. GYO-Illinois provides services in conjunction with Northeastern Illinois University and provides funding to programs operated out of Eastern Illinois University and Southern Illinois University.

In addition to the annual General Funds appropriation, in Fiscal Year 2022, Grow Your Own-Illinois received an appropriation of \$1,033,700 from the federal Coronavirus Urgent Remediation Emergency (CURE) fund to recruit and support males of color to become teachers. This effort is aligned with *A Thriving Illinois* to enhance access to educator preparation programs (Growth Strategy 7). IBHE recommends reappropriating these federal funds in FY 2023 so that unspent funds can be accessed: **\$1,033,700, federal funds, no change.**

Cooperative Work Study Grants

Fiscal Year 2023 Recommendation: \$980,500

The Board is recommending Fiscal Year 2023 funding, the same level as Fiscal Year 2022.

IBHE awards grants to public and nonpublic institutions of higher education to provide internship experiences in business, industry, and government for undergraduate students. For Fiscal Year 2022, IBHE embedded equity in the application and evaluation criteria and selected 30 schools to provide approximately 910 students with internships. In Fiscal Year 2023, IBHE will place an even stronger emphasis on equity, including requiring submission of demographics of students served in prior years and current student enrollment, persistence, and completion rates.

MyCreditsTransfer Project

Fiscal Year 2023 Recommendation: \$183,300

The Board is recommending Fiscal Year 2023 funding at the same level as Fiscal Year 2022.

The MyCreditsTransfer Project is a statewide web-based tool to aid students who intend to transfer among Illinois higher education institutions. Students create personal accounts to track their progress toward specific degrees at institutions where they have not yet matriculated. MyCreditsTransfer is one component of Growth Strategy 8 to strengthen the statewide, coordinated transfer system to ensure students have seamless paths to build on previous academic learning and earn postsecondary credentials.

Having this information is a powerful way to ensure students successfully move across and through the higher education system toward their degrees. It is another tool that especially helps first-generation, low-income, and minority students successfully navigate the higher education system, helping to close equity gaps.

In addition to the IBHE grant, MyCreditsTransfer is supported by the University of Illinois, the iTransfer.org project, and the participating institutions.

More information on MyCreditsTransfer can be found at mycreditstransfer.com.

Illinois Mathematics and Science Academy Fusion Program

Fiscal Year 2023 Recommendation: \$95,900

The Board is recommending Fiscal Year 2023 funding remain at the Fiscal Year 2022 level.

IMSA Fusion is an after-school enrichment program for Illinois students, with a special focus on students historically underrepresented and underserved in mathematics and science. It provides services to students in late elementary (grades 4-5) and middle school (grades 6-8) who are talented, interested and motivated in mathematics and science. Fusion also serves as a professional development program for participating Illinois teachers.

IMSA Fusion has four major goals:

- To maintain or increase students' interest, involvement, and literacy in science and mathematics;
- To enhance the knowledge and skills of middle school science and mathematics teachers;
- To stimulate excellence in middle schools' science and mathematics programs; and
- To help increase access to programming for students who are historically underrepresented in mathematics and science, and for all areas of the state.

Nursing School Grant Program

Fiscal Year 2023 Recommendation: \$373,900

The Board is recommending Fiscal Year 2023 funding at the same level as Fiscal Year 2022.

Nursing School grants expand or improve existing registered nursing programs to help address Illinois' nurse shortage. Funds are used to increase the opportunities for Registered Nurses with associate degrees to earn baccalaureate degrees in nursing. In Fiscal Year 2022 IBHE incorporated equity by encouraging applications to focus on efforts to close equity gaps in enrollment, retention, and completion of students who are African American, Latinx, low-income, first generation, from rural communities, are working adults, or persons with disabilities. All four funded programs focused on strategies to close equity gaps.

Nursing Educator Fellowships

Fiscal Year 2023 Recommendation: \$197,400

The Board is recommending Fiscal Year 2023 funding at the same level as Fiscal Year 2022.

The Nurse Educator Fellowships assists Illinois institutions of higher education with retention of their well-qualified nursing faculty members through a combination of professional and financial recognition.

Achieving the status of Nurse Educator Fellow is highly competitive and requires a proposal on how the Fellowship will help the candidate achieve their professional goals in nursing education, research, or outreach. Fellows conclude the program with a presentation and discussion with the members of the Advisory Board for the Illinois Center for Nursing. In Fiscal Year 2022 IBHE incorporated equity in the application process by providing additional consideration in scoring to institutions that serve higher percentage of students who are African American, Latinx, low-income, first generation, from rural areas, working adults, or persons with disabilities.

Creating Pathways and Access for Student Success Foundation (CPASS) Fiscal Year 2023
Recommendation: \$1,433,600

The Board is recommending Fiscal Year 2023 funding at the same level as Fiscal Year 2022.

The Creating Pathways and Access program aims to increase the number of underrepresented students in major healthcare and related STEM professions by providing a strong education foundation and access to resources. Hands-on programs focus on STEM and STEM education for middle, high school, and college students.

University Center of Lake County
Fiscal Year 2023 Recommendation: \$1,108,485

The Board is recommending a \$52,785 (5%) increase for Fiscal Year 2023 for the University Center of Lake County.

Established by IBHE in 1998, the University Center of Lake County (UCLC) is a consortium of 12 public and private colleges and universities that deliver 100 bachelor completion, master's degrees, and certificate and workforce development programs to an underserved northeast suburban Chicago. The 91,000 square foot state-owned UCLC facility was built with county, state, and federal funds on land donated by the College of Lake County in Grayslake.

Since its founding, UCLC has served nearly 8,500 students and awarded over 1,900 undergraduate and 1,700 graduate degrees.

More information on the UCLC can be found at ucenter.org.

Quad-Cities Graduate Study Center
Fiscal Year 2023 Recommendation: \$73,800

IBHE is recommending Fiscal Year 2023 funding at the same level as Fiscal Year 2022.

The Quad-Cities Graduate Study Center (Grad Center) is an academic consortium that was founded in 1969 by members of the business, government, and education communities to increase access to high quality graduate-level programming and foster local economic growth. The Grad Center is designed for students whose work and family responsibilities make traditional on-campus study difficult. The Grad Center strives to develop convenient and diverse program offerings for students.

The Grad Center works with 5 member institutions to offer graduate programs with certificate, masters, doctorate, and non-credit options to students.

More information on the Quad-Cities Graduate Center can be found at gradcenter.org.

Assessment of Higher Education Needs in Quad Cities
Fiscal Year 2023 Recommendation: Reappropriation of \$500,000.

In Fiscal Year 2022, IBHE received an appropriation of \$500,000 to conduct an assessment of higher education needs in the Quad Cities. IBHE will issue a Request for Proposals for consulting

support to lead the assessment work. Anticipating that the work will not be completed in Fiscal Year 2022, IBHE is recommending that these funds be reappropriated in Fiscal Year 2023 so that the work can be completed.

Early Childhood Access Consortium for Equity

Fiscal Year 2023 Recommendation: \$45,000,000 federal funding.

The IBHE and ICCB have come together to establish the [Early Childhood Access Consortium for Equity](#) to streamline, coordinate, and improve access to credentials and degree completion for the incumbent early childhood workforce, as outlined in [P. A. 102-0174](#).



All public universities, community colleges, and private universities who wish to join the Consortium will ensure that students can fully transfer their Associate of Applied Science in early childhood degree to a baccalaureate program; courses and support services will be offered at times and in ways that are convenient for working adults; and between now and September 30, 2024, eligible students can access scholarships that will cover total cost of attendance (also described in the ISAC section). Institutions will receive funds to support curriculum development and for dedicated coaches/mentors to ensure students have the support they need to succeed. Federal funds committed by Governor JB Pritzker and the Illinois Department of Human services are supporting this initiative.

In Fiscal Year 2023, IBHE is recommending the federal appropriation at \$45 million. Funds will be used to provide grants to institutions to support curriculum redesign, mentors and coaches, student supports, and to release student financial holds. Funds have also been designated for a communications campaign to highlight scholarship opportunities and increase interest in the field. Additionally, funds will be used to support the administration of the early childhood consortium.

Illinois Tutoring Initiative

Fiscal Year 2023 Recommendation: \$25,000,000 federal funding



The Illinois Tutoring Initiative is one of four statewide strategies for learning renewal developed by the P-20 Council to respond to the pandemic. The Illinois Tutoring Initiative is a partnership among public universities, community colleges, and school districts of need in six regions across the state to provide high-impact tutoring to elementary and middle school students. Teacher education candidates, higher education students, and other community partners will be recruited, trained, and supported to provide tutoring in dosages of three hours per week to individual students and small groups of no more than three students. Funding was provided by the Illinois State Board of Education (ISBE) through federal funds starting in Fiscal Year 2022 and will continue into Fiscal Year 2023. The IBHE recommends continued funding: **\$25,000,000 federal funds.**

Governor's Emergency Education Relief (GEER) Fund

Fiscal Year 2023 Recommended Funding: \$43,000,000 federal funding.

The IBHE is recommending Fiscal Year 2023 funding at the same level as Fiscal Year 2022 funding.

In Fiscal Year 2021, Illinois received approximately \$108 million from the federal Governor's

Emergency Education Relief (GEER) fund. Governor JB Pritzker dedicated nearly half of those funds (\$48 million) to higher education. IBHE and ICCB awarded those funds to public universities and community colleges using an equity-based formula that provided more funding to institutions that served a higher percentage of Pell students. Institutions were charged with using the funds to support the enrollment or retention of students who were most impacted by the pandemic, including low-income students, students of color, students from rural communities, and working adult students. IBHE also awarded \$3M of these funds to eligible private and public universities through a competitive process

In Fiscal Year 2022, a second round of GEER funds was awarded to states and the Governor provided \$23.5 million (again, half of the funds) to higher education. IBHE and ICCB awarded the funds to public universities and community colleges using the same allocation as the first round of GEER funds, and funds were set aside for ISAC to extend ISACorps members service, as well as to ICCB and IBHE to support agency efforts. These GEER funds are also dedicated to serving students most impacted by the pandemic, but with a particular focus on learning renewal and social-emotional supports. Fiscal Year 2023 funding will allow institutions and agencies to continue to provide services throughout the federal award period.

Behavioral Health Workforce Education Center

IBHE has partnered with the Illinois Department of Human Services (DHS) to identify two public university partners to establish the Behavioral Health Workforce Education Center, established in [P.A. 102-4](#). The Center was developed based on recommendations of the [Behavioral Health Workforce Task Force](#) to help address the dramatic and growing shortage of workers in the behavioral health field, a shortage that is exacerbated by the pandemic. Southern Illinois University School of Medicine and the University of Illinois-Chicago were selected as the hubs of this new Center. Meeting the state's workforce needs is aligned with Growth Strategy #3 to meet the state's economic needs. DHS is setting aside approximately \$6 million to provide to IBHE to fund this effort. A related loan repayment initiative is described in the ISAC section.

STATE UNIVERSITIES RETIREMENT SYSTEM (SURS)

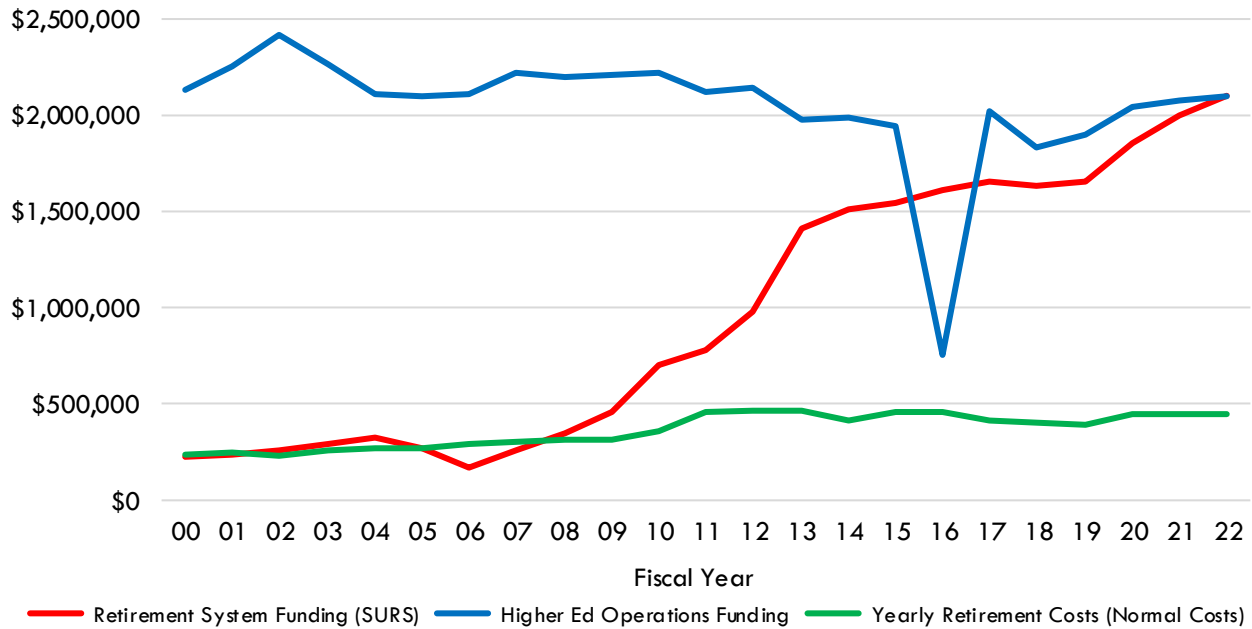
Fiscal Year 2023 Recommended Funding for All Funds: \$2,123,504,765

The Board is recommending Fiscal Year 2023 SURS funding at the full certified level, a \$17.3 million increase over Fiscal Year 2022, and the Community College Health Insurance fund at \$4,937,765, an increase of \$103,544.

The State Universities Retirement System provides retirement benefits for employees of the public universities, community colleges, and several higher education agencies including IBHE and ICCB. Each year the System certifies a state contribution amount according to a statutory calculation designed for the fund to achieve 90% funding by the year 2045.

The state has had a history of underfunding the pension systems, including under the statutory calculation. Only \$468.9 million (22.1 percent) of the certified amount will be used to cover the normal/current cost of employees earning benefits in Fiscal Year 2023. The remaining \$1.65 billion (77.9 percent) goes to cover past unfunded liabilities.

Figure 7: SURS Funding Compared to Higher Education Funding
Fiscal Years 2000-2022 (General Funds)



Community College Health Insurance Security Fund. The state provides health insurance to retirees through two systems. Public university employees receive health insurance through the same program as other state employees, even though the pensions are separate. These funds are not budgeted in the higher education budget and therefore not addressed here. Community college retirees, however, receive their health insurance through the Community College Health Insurance Security Fund, which is budgeted as part of higher education and therefore IBHE makes annual funding recommendations. For Fiscal Year 2023 IBHE is recommending this retiree health program be funded at the full SURS certified rate of \$4.9 million.

FISCAL YEAR 2023 RECOMMENDATIONS FOR CAPITAL IMPROVEMENTS

Investing in Higher Education Capital: Rebuild Illinois

Each year, the Illinois Board of Higher Education collects and analyzes detailed information regarding the capital needs of public colleges and universities and makes annual budget recommendations to the Governor and General Assembly.

In 2019 **Rebuild Illinois**, the state's first capital program in 10 years, was adopted. Included was \$2.6 billion in new funding for public and private higher education plus \$1.4 billion for reappropriated projects. **Rebuild Illinois** was designed to be implemented over six years.

Figure 8: **Rebuild Illinois** – Higher Education Funding Summary
(\$ in thousands)

	New Projects	Emergency & Capital Renewal	Total
Universities	\$943,740.5	\$653,526.5	\$1,597,267.0
Community Colleges	285,693.6	188,447.8	474,141.4
IMSA	8,675.8	6,680.0	15,355.8
Private Col. & Univ.	505,000.0	0	505,000.0
Total Rebuild Illinois	\$1,743,109.9	\$848,654.3	\$2,591,764.2
Reappropriations (pre-Rebuild Illinois)			\$1,385,042.8

A statewide appropriation of \$188M is available for all projects – Some could be allocated to CCs and Universities

Although IBHE continues to collect and prioritize requests for new capital projects that were not included in **Rebuild Illinois**, IBHE's FY 23 capital budget recommendations do not include new capital projects. IBHE is advocating for rapid release of the projects already appropriated and expedited design and construction for projects that have been released.

As of December, 2021, 60 capital projects with estimated cost of \$1.2 billion are underway at public universities, with \$1.0 billion in the design phase and approximately \$200 million under construction. At the community colleges, nearly 100 projects are underway, at a value of \$500 million. Approximately 30 projects are in construction, at a value of nearly \$100 million, with an additional \$300 million in the design phase. Remaining projects are in the closeout phase. **IBHE is recommending reappropriations of all of these projects in Fiscal Year 2023.**

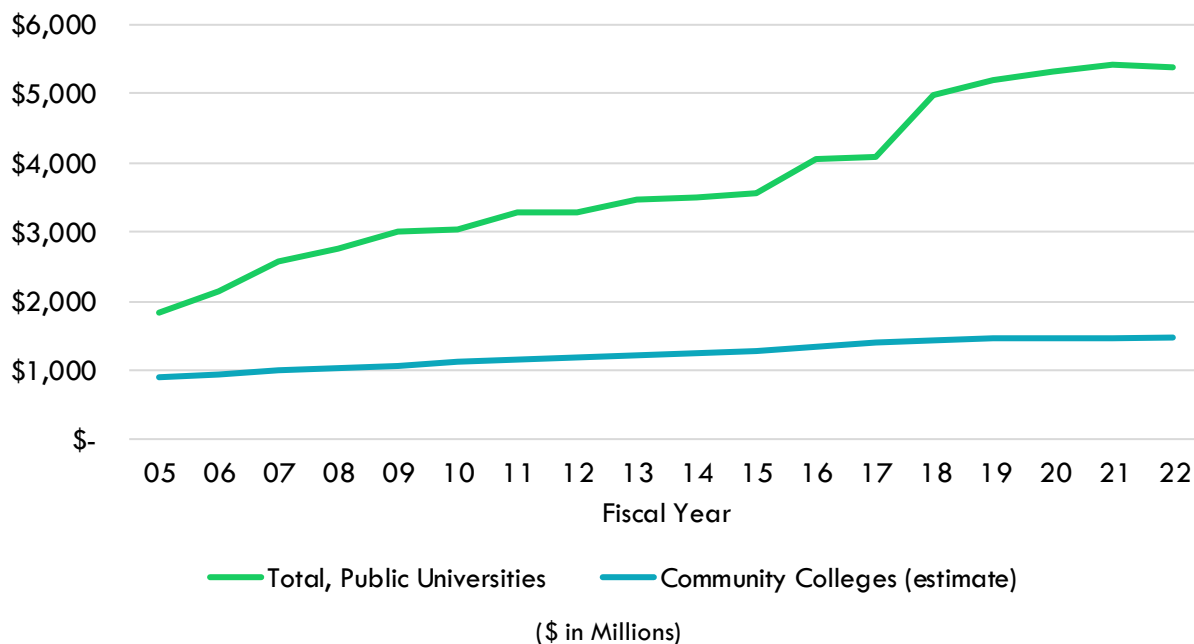
Table G-13 provides a list of projects underway.

In addition to the projects underway, there are additional projects with appropriations that are pending release. **IBHE recommends reappropriation in Fiscal Year 2023 of these additional projects.**

Deferred Maintenance

Despite the many projects that are underway, releasing funds for emergency projects and capital renewal remain urgent, given the increasing deferred maintenance costs. The backlog of deferred maintenance ballooned from \$2.7 billion in Fiscal Year 2005 to \$6.7 billion at the end of Fiscal Year 2019. Since then there has been a more modest growth, but still a significant backlog of \$6.9 billion at the end of Fiscal Year 2022.

Figure 9: Public Higher Education Deferred Maintenance



Capital Renewal Recommendations

Capital renewal funding provides support for critical remodeling and infrastructure improvements that maintain and protect the state's investment in educational facilities. **Rebuild Illinois** appropriated capital renewal funding at each of the institutions.

Looked at more generally, industry standards (50-year replacement cycle) require investment of two percent of the facility replacement cost annually to avoid building deferred maintenance. With an estimated total value of state-owned higher education facilities at \$26.6 billion, and approximately \$16.9 billion supported by state funds, an investment of \$337.4 million in Fiscal Year 2023 would be needed. However, even if 3 percent were provided each year, Figure 10 shows that it would still take 31.9 years to eliminatethe backlog just for public universities.

Figure 10: FY 23 Public University Capital Renewal Investment to Reduce Deferred Maintenance Backlog

Total Square Feet	79,053,929
Avg. \$/Square Foot	\$336.33
Total Value of University Facilities	\$26,588,032,029
State Supported Square Feet	50,177,975
Avg. \$/Square Foot	\$336.18
Est. Value of State Supported Fac.	\$16,868,984,267
2% Industry Standard	\$337,379,800
1% Catch-up Funding	\$168,689,800
FY 22 Deferred Maintenance	\$5,388,640,300
Est. Years to Recovery @1%	31.9
Non-State Supported Facilities	28,875,954
Avg. \$/Square Foot	\$336.58
Est. Value of Non-State Supported	\$9,719,047,762
% Non-State Supported Facilities	36.6%

Regular Capital Projects

Selection and Prioritization of Recommended Regular Capital Projects

In a typical year, the Board's *Higher Education Statewide Capital Policies and Priorities*, adopted in April 2004, serves as a guideline in selecting projects to be included in the budget recommendations. This ensures that recommended projects are consistent with and advance state and institutional priorities. Capital projects recommended for funding shall address a clearly demonstrated need related to special programmatic requirements, enrollment demands, and/or the condition of existing space. Once projects are selected for inclusion in the recommendations, a priority list is developed, indicating the order in which projects should be funded. Factors considered in developing these lists include whether:

- A commitment for a project has been made through prior appropriation(s) or authorizations.
- The status of an ongoing project for which planning, or construction funds have been appropriated necessitates that funding be provided to complete the project in a timely fashion.
- The project addresses an emergency infrastructure problem, e.g., problems caused by fire or tornado damage; construction defects; or compliance with life, health, and safety code requirements.
- The project received a high ranking on a public university governing board's priority list, ICCB's priority list of community college projects, or IMSA's priority list;
- The location of the project on the IBHE's prior year's priority list to encourage multi-year, statewide planning through a "living priority" list. After a project is recommended to the Governor and General Assembly for funding, the Board endeavors to advance its position on the list until it is funded; and

- External funding sources are available or whether enrollment needs, academic/program needs, and statewide needs are evident.

However, as noted above, IBHE is not recommending any new regular capital projects in Fiscal Year 2023; the Board is recommending continuing implementation of Rebuild Illinois.

APPENDIX A
PERFORMANCE FUNDING

Appendix A

Performance Funding History

Origin and Early History (2012-2014)

P.A. 97-320 (2012) required IBHE to devise a system for allocating state resources to public institutions of higher education based upon performance in achieving state goals related to student success and certificate and degree completion. Under the Act, a system was to be set up with metrics that reward performance of institutions in advancing the success of students who are academically or financially at-risk, first-generation students, low-income students, or students traditionally underrepresented in higher education. The metrics established should also recognize and account for the differentiated missions of institutions of higher education, focus on the fundamental goal of increasing completion, recognize the unique and broad mission of public community colleges, and maintain the quality of degrees, certificates, courses, and programs.

As required by the statute, the IBHE Board adopted a performance funding for implementation in with the Fiscal Year 2013 budget, which was later refined after a Steering Committee. The performance funding model for public universities identifies performance measures or metrics that are linked directly to the goals of the *Illinois Public Agenda for College and Career Success*, the higher education strategic plan adopted in 2010. IBHE is responsible for collecting the data on the following performance measures:

- Bachelor's degrees awarded;
- Master's degrees awarded;
- Doctoral and Professional degrees awarded;
- Undergraduate degrees per 100 FTE enrolled;
- Research and public service expenditures;
- Graduation Rates 150 percent of Time;
- Persistence (24 Credit Hours Completed in One Year);
- Cost per Credit Hour; and
- Cost per Completion.

When analyzing the performance funding model for public universities, it is important to note the following. All steps are identical at each university.

- The model accounts for each institution's unique mission by adding weight to each measure.
- Each institution's performance point calculation is independent.
- The performance point calculation for each institution will change each year based on annually updated three-year average data.
- The funding allocation is competitive. Funds are distributed according to each institution's performance point calculation.
- The model is not prescriptive in how to achieve excellence and success.

Performance Funding Refinement and Steering Committee (2014- 2018)

Subsequent to adopting the performance funding model, IBHE evaluated, reviewed, and revised it with support from the Performance Funding Steering Committee. Additionally, IBHE created the Performance Funding Refinement Committee, comprised of public university finance and research

experts, which was tasked with strengthening the existing performance measures and sub-categories to the extent possible or finding replacement measures that capture the principles of the performance funding Act.

The Refinement Committee's efforts generated the addition of certain measures designed to enhance efficiency. Committee discussion also produced an additional step to the model which provides for an adjustment factor for high-cost entities such as hospitals, medical, and dental schools.

In November 2014, IBHE along with the Performance Funding Steering Committee decided that the performance funding model should continue in place until Fiscal Year 2020, with potential for increasing the percent reallocation from 0.5 percent to as much as five percent.

Throughout this history, the performance funding adjustment was rarely included in the final appropriations.

At the behest of the General Assembly, in 2018 IBHE formed a new working group to explore a funding formula that went beyond performance funding, but that group was suspended as IBHE planned to launch a new strategic planning process.

Commission on Equitable Public University Funding (2021-2023)

In 2021, with IBHE administrative support, the legislative [Commission on Equitable Public University Funding](#) was launched to develop a new equitable, adequate, and stable funding formula for public universities aligned to the new higher education strategic plan, [A Thriving Illinois: Higher Education Paths to Equity, Sustainability, and Growth](#). More information about the work of the Commission can be found on the Commission's [dedicated IBHE website](#). The Commission's recommendations are due by July 1, 2023

Community College Performance Funding Model

The Illinois Community College Board (ICCB) is responsible for developing and overseeing the performance funding model for community colleges, which has each school vying for dollars against itself instead of against each other. The community college model contains the following performance measures:

- Degree and certificate completion;
- Degree and certificate completion of at-risk students;
- Transfer to a four-year institution;
- Remedial and adult education advancement;
- Momentum points; and
- Transfer to a community college.

The community college performance funding model is designed to allocate an equal portion of the total performance funding amount among Illinois' thirty-nine community college districts. Each college competes for a portion of the funding for each measure. Those colleges that show a decrease in performance receive no funds based on performance. Those colleges that show an increase in performance receive a pro rata share of the funding allocation for that measure based on the increase in their performance. Momentum points lend weight to the averages in categories such as first-time or part-time students completing twelve credit hours within their first year, first-

time or part-time students completing twenty-four credit hours within their first year, and Adult Education and Family Literacy level gains at each school.

APPENDIX B

GLOSSARY

Appendix B

Glossary: Higher Education Appropriations, Programs, and Budget Terminology

Adult Education Grant (administered by the Illinois Community College Board). This grant goes to various adult education providers throughout the state. Adult Education is defined as instruction and support services below the postsecondary (college) level for individuals who have attained 16 years of age; who are not enrolled or required to be enrolled in secondary school under state law; and who: (1) lack sufficient mastery of basic educational skills to enable the individuals to function effectively in society; (2) do not have a secondary school (high school) diploma or its recognized equivalent, and have not achieved an equivalent level of education; or (3) are unable to speak, read, or write the English language. iccb.org/adult_ed

AIM HIGH (administered by the Illinois Student Assistance Commission). Provides merit-based financial aid for students attending one of Illinois' 12 public four-year institutions. Funding is provided to each State university based on a formula. Each university develops its own program aimed at attracting and retaining Illinois students based on merit. Plans must be approved by the Illinois Student Assistance Commission. isac.org

Alternative Schools Network (administered by the Illinois Community College Board). This grant was transferred by the General Assembly from the Illinois State Board of Education to the ICCB to fund the Alternative Schools Network. This program re-enrolls high school dropouts in a program that will ultimately allow them to receive a high school diploma

Apprenticeship Ready (administered by the Illinois Community College Board). Supports programs at community colleges to help participants develop the skills needed for entry into apprenticeship programs and the opportunity for a career with high wage earning potential.

Base Operating Grant (administered by the Illinois Community College Board). The base operating grant focuses on equity, productivity, and mission. By providing the same allocation for the same programs to each community college district, the formula provides for an equitable distribution of funds. Because enrollment growth and decline affect the allocation of funds, productivity is addressed. Because the funding strategy recognizes differences in programming; e.g., some districts have a greater concentration of technical programs than others, mission differences are recognized in the funding strategy.

Career and Technical Education Grant (administered by the Illinois Community College Board). This grant recognizes that keeping career and technical programs current and reflective of the highest quality practices in the workplace is necessary to prepare students to be successful in their chosen careers and to provide employers with the well-trained workforce they require. CTE programs offered by the colleges provide students with opportunities in over 100 career & technical fields. These programs include integrated academic and technical instruction, work-based learning, dual credit opportunities and potential for continuing education at the baccalaureate level. iccb.org/cte

Cooperative Work Study Grants (CWS) (administered by the Illinois Board of Higher Education). Provides grants to both public and independent colleges and universities and is designed to enhance public-private sector partnerships, expand internship opportunities, reduce student reliance on

loans, encourage permanent employment of graduates in Illinois, and provide links between academic programs and employment. ibhe.org/icws.html

Creating Pathways and Access for Student Success Foundation (CPASS) (administered by the Illinois Board of Higher Education). IBHE provides pass-through funding to this 501(c)(3) foundation which builds upon the Chicago Area Health and Medical Careers Program (CAHMCP, known as “Champs”). Founded in 1979 at the Illinois Institute of Technology, CAHMCP was a pipeline program for underrepresented high school and college students for careers in healthcare and medicine. CPASS Foundation was created to attract, encourage, education, guide and increase the number of promising, yet underrepresented Illinois students in STEM and STEAM-related professions. cpassfoundation.org

Deferred Maintenance. As campus facilities age and deteriorate, the lack of adequate financial resources has resulted in the delay or deferral of maintenance projects that include critical repairs, remodeling and infrastructure improvements that maintain and protect campus facilities. Deferred Maintenance, or capital renewal, projects are generally of lesser size and scope than Regular Capital projects and involve minor remodeling of facilities to repair building exteriors; to upgrade electrical, mechanical, roofing, and plumbing systems; to address safety and accessibility code requirements; and to remodel classroom and laboratory areas for current educational and research program requirements.

Dependents Grant (administered by the Illinois Student Assistance Commission). If a correctional officer employed by the Illinois Department of Corrections in a security position or an Illinois police or fire officer is killed or sustains an injury resulting in a permanent disability in the line of duty, the officer’s spouse and children may receive grant assistance under this program, without regard to financial need. isac.org

Designated Grant – City Colleges of Chicago (administered by the Illinois Community College Board). This grant originated in fiscal year 2005 to compensate for the district’s loss in equalization funding. The grant can be used for operating expenditures at City Colleges of Chicago.

Diversifying Higher Education Faculty in Illinois (DFI) (administered by Illinois Board of Higher Education). DFI Program Board awards financial aid to minority graduate students to help increase the number of underrepresented faculty and staff in Illinois institutions of higher education and higher education governing boards. ibhe.org/dfi.html

East St. Louis Higher Education Center (administered by the Illinois Community College Board). Funding for the East St. Louis Community College Center provides support to fund higher education consortium activities at the center. Higher education training has been offered at the Center since 1999 after the closing of Metropolitan Community College. eslccc.com/eslccc

Equalization Grants (administered by the Illinois Community College Board). The grants attempt to reduce the disparity among districts in local property tax funds available per student, thereby ensuring that colleges with limited local tax bases have access to funds necessary to support educational programs.

Fiscal Year for the State of Illinois. Begins on July 1 and ends on June 30 of the next year.

Funds – funds are explained in a separate section at the end of the glossary.

Grant Accountability and Transparency Act (GATA). GATA is an Illinois initiative meant to increase accountability and transparency in the use of grant funds while reducing the administrative burden on both State agencies and grantees through adoption of the federal grant guidance and regulations. The Grant Accountability and Transparency Unit (GATU) was established in the Governor's Office of Management and Budget and is charged with implementation of the Act in coordination with State grant-making agencies and grantees. www2.illinois.gov/sites/GATA

Golden Apple Scholars of Illinois Program (administered by the Illinois Student Assistance Commission). The Illinois Student Assistance Commission provides pass-through funding to the Golden Apple Scholars of Illinois Program. The program is a public-private partnership that recruits and prepares talented and diverse high school graduates for successful teaching careers in high-need schools throughout Illinois and provides scholarships to students pursuing teaching degrees. goldenapple.org and isac.org

Grow Your Own Teacher (a.k.a. GYO) (administered by the Illinois Board of Higher Education). Funds are awarded to the Grow Your Own Illinois, a 501(c)(3) foundation, to advance the efforts of GYO consortia to recruit and prepare parent and community leaders and paraeducators statewide to become effective teachers in schools serving a substantial percentage of low-income students. growyourownteachers.org and ibhe.org

Higher Education Cooperation Act (HECA) Grants. This program is designed to promote effective use of resources through cooperation among institutions, to achieve an equitable distribution of education services, and to develop innovative concepts and applications. The grants go to both public and private institutions. Cooperation, as defined by the statute, involves at least two higher education institutions, and should be designed to serve a public purpose, while promoting effective use of educational resources, the equitable distribution of educational services, and the development of innovative concepts and applications. Despite minimal funding, many HECA projects still exist today, including the Quad-Cities Graduate Studies Center, which brings quality graduate education to hundreds of students in the Quad-Cities area without the need to establish a new graduate institution or new graduate program.

Higher Education License Plate (HELP) (administered by the Illinois Student Assistance Commission). The Higher Education License Plate Program provides grants to students who attend colleges for which the special collegiate license plates are available. The Illinois Secretary of State issues the license plates, and part of the proceeds are used for grants for undergraduate students attending these colleges. Program grants may be used only for tuition and mandatory fees for two semesters or three quarters in an academic year. isac.org

Illinois Board of Higher Education (IBHE). The state coordinating board for higher education. ibhe.org

Illinois Community College Board (ICCB). Serves as the state coordinating board for community colleges. iccb.org

Illinois Fire Services Institute (University of Illinois). This Institute is the statutory fire academy for the State of Illinois. It is operated as a continuing education and public service activity by the University of Illinois. fsi.illinois.edu

Illinois Longitudinal Data System (ILDS) (administered by the Illinois Board of Higher Education, the Illinois Community College Board, and the Illinois State Board of Education). ILDS is a student unit record data system that links student records from early learning through the postsecondary level, which may consist of separate student unit record systems integrated through agreement and data transfer mechanisms.

Illinois Mathematics & Science Academy (IMSA). A teaching and learning laboratory created by the State in Aurora, Illinois. IMSA enrolls academically talented Illinois students (grades 10-12) in its advanced, residential college preparatory program. It also serves thousands of educators and students in Illinois and beyond through innovative instructional programs that foster imagination and inquiry. IMSA also advances education through research, groundbreaking ventures and strategic partnerships. imsa.edu

Illinois National Guard Grant Program (ING) (administered by the Illinois Student Assistance Commission). The Illinois National Guard Grant Program pays tuition and fees for members of the Illinois National Guard to attend public four or two-year institutions for undergraduate or graduate study. Students are eligible for eight semesters or 12 quarters of assistance. Illinois public institutions are required to waive any eligible tuition and fees that are not covered by state appropriations. isac.org

Illinois Optometric Education Scholarship Program (administered by the Illinois Student Assistance Commission). The Optometric Education Scholarship Program provides scholarship assistance to encourage eligible students to pursue a graduate degree in optometry. The scholarship may be used to pay tuition and mandatory fees for two semesters, or three quarters in an academic year. The award amount determined by the institution will be the lesser of \$5,000 or tuition and mandatory fees. isac.org

Illinois Special Education Tuition Waiver Program (SETTW) (administered by the Illinois Student Assistance Commission). SETTW program encourages current teachers and academically talented students to pursue careers in any area of special education as public, private, or parochial preschool, elementary or secondary school teachers in Illinois. Recipients must be seeking initial certification in any area of special education as undergraduate or graduate students. For non-teachers, students must be ranked in the upper half of their Illinois high school graduating class. Recipients are exempt from paying tuition and fees at an eligible institution for up to four calendar years. Recipients must fulfill a teaching requirement or repay funds received plus interest. isac.org

Illinois Mathematics and Science Fusion Program (administered by the Illinois Mathematics & Science Academy). IMSA FUSION is an after-school enrichment program for Illinois 4th-8th grade students who are talented, interested, and motivated in math and science with special emphasis schools on schools in under resourced and underserved communities. The program's four major goals include: maintain or increase students' interest, involvement and literacy in science and mathematics; enhance the knowledge and skills of teachers in science, mathematics, and technology; stimulate excellence in schools' science and mathematics programs; and help increase access to programming for students who are historically under-resourced in science, mathematics and technology and for all areas of the state. imsa.edu/extensionprograms/fusion

Illinois Student Assistance Commission (ISAC). The mission of ISAC is to make college accessible and affordable for all Illinois students. ISAC provides guarantee services and loan origination for

student loans, administers grants and scholarships and provides outreach programs and services to help students plan for college and borrow responsibly. isac.org

Illinois Teachers Loan Repayment Program (administered by the Illinois Student Assistance Commission). The Illinois Teachers Loan Repayment Program provides awards to encourage academically talented Illinois students to teach in Illinois schools in low-income areas. (A listing of Illinois schools in low-income areas is provided at the U.S. Department of Education's [Teacher Cancellation Low Income Directory](#).) If these obligations are met by a Federal Stafford loan borrower who has qualified for the federal government's loan forgiveness programs, Illinois may provide an additional matching award of up to \$5,000 to the qualifying teacher to repay their student loan debt. isac.org

Illinois Veteran Grant (IVG) (administered by the Illinois Student Assistance Commission). Program pays eligible tuition and mandatory fees. Benefits are limited to use only at Illinois public universities and community colleges. This grant is an entitlement program and is awarded to eligible applicants regardless of the funding level. When funded, the program provides for compensating institutions for waiving the tuition and fees for qualified applicants. isac.org

John R. Justice Loan Repayment (administered by the Illinois Student Assistance Commission). The John R. Justice Student Loan Repayment Program is a federally funded program that provides for the payment of eligible educational loans for state and federal public defenders and state prosecutors who agree to remain employed as public defenders and prosecutors for at least three years. The awards to qualified defenders and prosecutors may be up to an aggregate total of \$60,000, to repay their student loan debt. isac.org

Lincoln's Challenge Scholarships (administered by the Illinois Community College Board). The program is a military style boot camp for at-risk teenagers who have not completed high school. Students successfully completing the program are eligible to receive a scholarship to attend a community college through this grant. lincolnschallenge.org

Midwest Higher Education Compact (MHEC) one of four statutorily-created interstate compacts, was founded in 1991 and is a nonprofit regional organization serving Illinois, Indiana, Iowa, Kansas, Michigan, Minnesota, Missouri, Nebraska, North Dakota, Ohio, South Dakota, and Wisconsin. *The purpose of MHEC is to improve greater higher education opportunities and services to the Midwest region, with the aim of furthering regional access to, research in and choice of higher education for the citizens residing in the several states which are parties to the compact.* IBHE is responsible for making the mandatory annual State payment to MHEC. mhec.org

Minority Teachers of Illinois (MTI) Scholarship (administered by the Illinois Student Assistance Commission). The MTI Scholarship Program encourages academically talented minority students to pursue careers as teachers at Illinois preschool, elementary and secondary schools. The program also aims to provide minority children with access to a greater number of positive minority role models. The scholarship awards up to \$5,000 per academic year for a maximum of four years. Students receiving this scholarship must fulfill a teaching commitment at an Illinois public, private, or parochial preschool, elementary or secondary school at which no less than 30 percent of the enrolled students are minority students for each year of scholarship assistance. isac.org

Monetary Award Program (MAP) (administered by Illinois Student Assistance Commission). MAP provides grant assistance to eligible students demonstrating financial need. Grants are applied toward tuition and mandatory fees at Illinois colleges and universities and certain other

degree-granting institutions for undergraduate students not to exceed the maximum award amount for the academic year. The maximum award level is dependent on legislative action and available funding in any given year. Students apply using the Free Application for Federal Student Aid (FAFSA) and must release their financial data to ISAC. isac.org

MyCreditsTransfer (administered by Illinois Board of Higher Education). MyCreditsTransfer is a statewide initiative designed to facilitate transfer of courses within Illinois using the nationally available tool, Transferology. Students can find the courses that transfer between institutions and fulfill degree requirements. This tool greatly expedites and improves student planning and transfer. itransfer.org

Nurse Educator Fellowships (administered by the Illinois Board of Higher Education). Nursing is a long-term high-demand field that requires the retention of well-qualified faculty to train additional nursing students. This fellowship helps Illinois institutions recognize and retain their well-qualified nurse educators so that Illinois can continue to address the demand. Eligible programs must meet accreditation requirements and other eligibility criteria. Fellowship awards are used to supplement the salaries of the nursing faculty for professional development and continuing education. ibhe.org/nefp.html

Nurse Educator Loan Repayment (administered by Illinois Student Assistance Commission). To address the shortage of nurses and the lack of instructors to staff courses teaching nursing in Illinois, the Nurse Educator Loan Repayment Program encourages longevity and career change opportunities. The program is intended as an incentive to nurse educators in maintaining their teaching careers within the State of Illinois. The annual awards to qualified nurse educators may be up to \$5,000 to repay their student loan debt and may be received for up to a maximum of four years. isac.org

Nursing School Grant Program (administered by the Illinois Board of Higher Education). The intent of this program is to increase the number of registered professional nurses graduating from Illinois institutions. Grants are provided to existing programs for expansion of high-performing programs or for improvement of those with performance concerns. Eligible nursing programs must meet accreditation requirements and other eligibility criteria. ibhe.org/nsqp.html

Operations Expenses. Expenses required for normal agency activities (including expenditures for personal services, fringe benefits, contractual services, commodities, equipment, electronic data processing, telecommunication, and operation of automotive equipment).

P-20 Council. The mission is to deliberate and make recommendations to the Governor, Illinois General Assembly, and state agencies for developing a seamless and sustainable statewide system of quality education and support, from birth through adulthood, to maximize students' education attainment, opportunities for success in the workforce, and contributions to their local communities. The Council is composed of members appointed by the Governor representing business leaders, local government, university administrators, school boards, unions, nonprofits, teachers, faculty, independent colleges, and parents. www2.illinois.gov

Paul Douglas Teachers Scholarship (administered by the Illinois Student Assistance Commission). The Paul Douglas Teacher Scholarship Program is a federally-funded program that enables and encourages outstanding high school graduates to pursue teaching careers at the pre-school, elementary or secondary school level by providing financial assistance in the form of

a scholarship. isac.org

Performance Based Funding. The purpose of performance funding is to assist with linking the goals of the *Illinois Public Agenda for College and Career Success* to the state's higher education budgeting process. Performance funding is a component of the state's plan to meet the Complete College America (CCA) goal that by 2025, 60 percent of Illinois adults will have a college degree or credential because that is the proportion of jobs which will require a degree or certificate by 2025. To that end, the Illinois Board of Higher Education (in consultation with the Performance Funding Steering Committee) devised a system for allocating state resources to public institutions of higher education based upon performance in achieving state goals. The current formula is being reviewed and may be adjusted prior to the next fiscal year budget request. ibhe.org/performfund.html

Perkins Grants (administered by the Illinois Community College Board). This federal grant, which requires a state match, is allocated to community colleges for career and technical education (CTE) curriculum. Specifically, colleges must improve the academic achievement of CTE students by strengthening the connections between secondary and postsecondary education; restructuring the way high schools, community colleges, universities, and businesses work together; and increasing state and local accountability standards.

Public Agenda for College and Career Success. In 2008 the General Assembly directed the Illinois Board of Higher Education to create a 25-member Task Force consisting of leaders who represent the education sector, the business sector, and the General Assembly. The purpose of the Task Force was to develop a master plan and action agenda, based on quantifiable evidence, for institutions, state education agencies, and the Governor and General Assembly to address the education, workforce, social, and economic needs of the State by setting priorities, developing policies, and allocating resources. The agenda report proposes a series of recommended strategies and action steps to achieve four goals over a decade. ibhe.org

Quad Cities Graduate Study Center (administered by the Illinois Board of Higher Education). The mission of the Center is to facilitate and support graduate-level education opportunities to the Quad Cities area. The Center, a bi-state academic consortium, was created by members of the community to increase access to graduate-level programming. This consortium includes Drake University, St. Ambrose University, University of Illinois Nursing, University of Iowa, and Western Illinois University. gradcenter.org

Small College Grants (administered by the Illinois Community College Board). This grant is designed to recognize that small colleges have fixed costs, particularly in administrative areas, and that these costs should be recognized to some extent in funding.

State Appropriations. All direct operations and grant appropriations made by the General Assembly and signed by the Governor are reported in this category. These revenue sources are generally unrestricted.

State University Retirement System (SURS). Administers the retirement system for state universities, community colleges, and state agencies in Illinois. Provides for SURS annuitants, participants, and their employers, in accordance with State law; manages and invests the fund's assets prudently; and endeavors to achieve and maintain a financially sound retirement system. surs.com

State Universities Civil Service System (SUCSS). Provides a statewide personnel administration system at 12 public institutions of higher education and at five affiliated agencies. Administers, develops, and maintains the basic rules and procedures related to the employment of professional(non-academic),technical, and support staff. sucss.illinois.gov

University Center of Lake County (UCLC) (administered by the Illinois Board of Higher Education). The University Center is comprised of 7 public and 9 private institutions providing bachelor completion,graduate, and advanced professional development programs at multiple sites to those who work or reside in or near Lake County. Students apply to and graduate from an individual college or university offering fully accredited degrees. Classes are scheduled in a variety of delivery formats that appeal to working non-traditional students: evenings and weekends, face-to-face, online, correspondence, and interactive video. ucenter.org

Veterans' Home Medical Provider Loan Repayment (administered by the Illinois Student Assistance Commission). This program provides for the payment of eligible educational loans as an incentive for medical providers to pursue and continue their careers at State of Illinois veterans' homes. The annual award to qualified physicians, certified nursepractitioners, registered professional nurses, certified nursing assistants and licensed practical nurses may be up to \$5,000 to repay their student loan debt. This award may be received for up to a maximum of four years.

Veterans Shortfall Grants (administered by the Illinois Community College Board). This grant is provided for offsetting the mandated tuition and fee waiver for veterans enrolling at community colleges.

APPENDIX C

FUNDS

Appendix C

Funds

Academic Quality Assurance Fund 0660. This fund was created to deposit fees collected for the administration and enforcement of the Academic Quality Act by the Illinois Board of Higher Education. Fees collected cover the cost of reviewing applications for authorization to operate and for authorization to grant degrees by private or proprietary institutions. Funds must be used by the Board to supplement support for the administration and enforcement of the Act.

Chicago State University Education Improvement Fund 0223. Established in Fiscal Year 2014, monies in the fund shall be used by Chicago State University, subject to appropriation, for expenses incurred by the university.

Data and Research Cost Recovery Fund 0766. Created in Fiscal Year 2018 to collect fees to cover the cost of processing and handling individual student-level data requests pursuant to an approved data sharing agreement. The fee shall not be assessed on any entities that are complying with State of federal-mandated reporting.

Distance Learning Fund 0082. The Distance Learning Fund was created as a special fund in the State treasury as part of Public Act 98-792. Fees collected from institutional participation in state distance learning reciprocity agreements shall be deposited into the Fund. "Distance learning" means instruction offered by any means where the student and faculty member are in separate physical locations. It includes, but is not limited to, online, interactive video or correspondence courses or programs.

Education Assistance Fund 0007. The EAF is one of four funds that comprise the state general funds. It is used to fund elementary, secondary, and higher education. It receives 7.3 percent of the state income tax net of refunds, as well as wagering taxes paid to the state by riverboat casinos.

Emergency Public Health Fund 0240. The purpose of this fund is to receive monies obtained from fees from the sale of new and used tires. Monies in the fund may be expended pursuant to appropriation for the Prairie Research Institute at the University of Illinois and for grants for expenses related to the West Nile Virus and other vector-borne diseases.

Federal Student Assistance Scholarship Fund. This fund acts as a repository for collections from individuals who do not fulfill their teaching requirements after receiving the federal Paul Douglas Teaching Scholarship. Once the collected funds are received, they are deposited into the U.S. Treasury as required by law.

Federal Student Incentive Trust Fund 0701. Until Fiscal Year 08, this fund's sole purpose was to serve as the repository for federal (S)LEAP funding to supplement Monetary Award Program (MAP) grants. Beginning in Fiscal Year 09, the fund also became the repository for funds from the federal College Access Challenge Grant (CACG). With the 2011 elimination of (S)LEAP and the expiration of CACG in 2015, the fund primarily holds federal GEAR UP dollars.

Federal Student Loan Fund 0663. Pursuant to federal law (PL 105-244 Section 422), the Federal Student Loan Fund may only be used by a guaranty agency (ISAC) to pay lender claims and a default aversion fee. ISAC is the fiduciary agent for this fund which is established to ensure that

lenders receive at least partial reimbursement for defaulted loans. ISAC is required to keep at least a 25 basis point reserve calculated on outstanding principal of all loans.

Fire Prevention Fund 0047. The purpose of this fund is to record money received from the Department of Financial and Professional Regulation pursuant to Section 12 of the Fire Investigation Act, fees and reimbursements received by the Office of the Fire Marshal, and fees from Boiler and Pressure Vessel Certifications. Monies in the fund are to be used for the maintenance and operations of the Office of the State Fire Marshall and the Illinois Fire Services Institute.

General Funds. Those funds established to receive the major portion of tax revenues and to pay the regular operating and administrative expenses of most state agencies. General Funds include the General Revenue Fund, the Education Assistance Fund, the Common School Fund (K12 education), the General Revenue-Common School Special Account Fund, the Fund for the Advancement of Education, the Commitment to Human Services Fund, and the Budget Stabilization Fund.

General Professions Dedicated Fund 0022. This fund receives receipts from fees and fines collected by the Department of Financial and Professional Regulation under various Acts as indicated by state statute. Revenue in this fund received from dental licensing fees is used to supplement dental education programs at Chicago State University, Southern Illinois University Edwardsville, and University of Illinois Chicago.

General Revenue Fund (GRF) 0001. Part of the General Funds, GRF is the most unrestricted of state revenue, including "all money, belonging to or for the use of the State, paid into the treasury thereof, not belonging to any special fund in the State Treasury, shall constitute the general revenue fund." (30 ILCS 105/4)

Golden Apple Scholars of Illinois Fund 0754. This fund is to be used for Golden Apple Scholars of Illinois program to encourage academically talented Illinois students, especially minority students, to pursue teaching careers, especially in teacher shortage disciplines or at hard-to-staff schools. The revenue source for this fund is Motor Vehicle Licenses.

The fund receives monies deposited by the Environmental Protection Agency from fees collected by the owner or operator of each hazardous waste disposal site and fee paid by hazardous waste haulers. These funds are expended by the Prairie Research Institute at the University of Illinois for research toward the reduction of hazardous properties of hazardous wastes in Illinois.

High School Equivalency Testing Fund 0161. This fund receives receipts from students taking GED tests in Cook County and is used for operating the GED testing program in Cook County.

IBHE Federal Grants Fund 0983. This fund is a federal trust fund created to receive and disburse monies received from the federal government. This fund is used to receive funding from the U.S. Department of Education from the No Child Left Behind (NCLB) – Improving Teacher Quality State Grant Program.

ICCB Adult Education Fund 0692. Monies in the Fund may be expended by the Illinois Community College Board for operational costs associated with the administration of adult education, literacy activities and educational-related services.

ICCB Career & Technical Education Fund 0772. This fund receives monies from the Federal Department of Education for operating expenses and other related costs associated with administration, grants, and leadership activities.

ICCB Contracts and Grants Fund 0339. Allows the Illinois Community College Board to receive and spend contracts or grants from various sources.

ICCB Federal Trust Fund 0350. This fund was established in statute for deposit of indirect funds charged to the Adult Education and CTE grants. It funds the Illinois Community College Board operating costs used for federal programs.

ICCB Research and Technology Fund 0070. This fund was established for deposit of funds from the sale of instructional technology developed in-house and fees received for processing requests for individual student level data.

Illinois Mathematics and Science Academy Income Fund 0359. IMSA's Income Fund receives essentially three types of earned revenues: (1) Annual fees from the families of students who enroll in IMSA's residential academic program; (2) Fees from students and others who participate in IMSA's various outreach programs (e.g., FUSION, PBL); and (3) Fees from parties who from time to time rent portions of IMSA's facilities. These revenues are used to support primarily the programs that generated them: Athletic and co-curricular programs for residential students (e.g., Resident Counselors' compensation) and outreach programs.

ISAC Contracts and Grants Fund 0677. The purpose of this fund is to support the Commission's research, training, and outreach activities through private grants and contracts for specific purposes. Revenue consists of payments received from private organizations, which are approved grant proposals and current contractual agreements.

ISAC State Accounts Receivable Fund 0242. This fund is used to receive payments from scholarship recipients that do not fulfill their teaching obligation set forth when they received scholarships from Illinois programs such as the Illinois Future Teacher Corps Scholarship and Minority Teacher of Illinois Scholarship. On a quarterly basis, approximately 75 percent of the collected funding is transferred to GRF. The remainder of the receipts is used to pay administrative cost of collections.

National Guard and Naval Militia Grant Fund 0721. Any person who has served at least one year in the Illinois National Guard or the Illinois Naval Militia and who possesses all necessary entrance requirements shall, upon application and proper proof, be awarded a grant to the State-controlled university or community college of his or her choice, consisting of exemption from tuition and fees for not more than the equivalent of 4 years of full-time enrollment, including summer terms. Beginning with the 2013-2014 academic year, any person who has served over 10 years in the Illinois National Guard shall be awarded an additional grant. The grants may be used at any state-supported institution of higher education.

Non-Appropriated Funds. Funds include revenue from local property taxes (community colleges only); government grants and contracts; private gifts, grants, and contracts; sales and services of auxiliary enterprises (e.g. student housing), educational departments, and hospitals; and endowment income. Funds are collected, held, and allocated locally by each university and community college district and reported to the Governor and the General Assembly annually by the Illinois Board of Higher Education.

Optometric Licensing and Disciplinary Board Fund 0259. The purpose of this fund is to receive monies from the Department of Financial and Professional Regulation pursuant to the Illinois Optometric Act of 1987. Monies in the fund are used by the Illinois Student Assistance Commission for the Optometric Education Scholarship Program.

Personal Property Replacement Tax Fund. Revenues for this fund are collected by the State and paid to local governments to replace money that was lost when their powers to impose personal property taxes on corporations, partnerships, and other business entities were taken away. A portion of these dollars are used to help fund the Illinois Community College Board's base operating grants.

Pet Population Control Fund 0764. The moneys in the fund are generated from Pet Friendly license plates under Section 3-653 of the Illinois Vehicle Code and from voluntary contributions. Monies in the fund are to be used for 1) sterilizing and vaccinating dogs and cats in Illinois, 2) promoting the sterilization program, 3) educating the public about the importance of spaying and neutering, and 4) reasonable administrative and personnel costs related to the fund. The University of Illinois has authority to expend funds from this fund.

Private Business and Vocational School Quality Assurance Fund 0751. This fund was created to deposit fees collected for the administration and enforcement of the Private Business and Vocational School Act by the Illinois Board of Higher Education. Funds must be used by the Board to support the administration and enforcement of the Act.

Private College Academic Quality Assurance Fund 0661. This fund was created to deposit fees collected for the administration and enforcement of the Private College Act by the Illinois Board of Higher Education. Fees collected cover the cost of reviewing applications for a certificate of approval to establish or operate private or proprietary postsecondary educational institution. Funds must be used by the Board to supplement support for administration and enforcement of the Act.

State Pension Fund 0054. This fund received monies from the sale of abandoned property pursuant to the Unclaimed Property Act of 1961. Revenues are used to reduce deficiency in retirement system funds.

Student Loan Operating Fund 0664. The purpose of this fund is to pay administrative costs for ISAC related to the financial aid programs for which it is responsible. Revenues deposited into the fund consist primarily of collections on defaulted student loans and student loan portfolio maintenance fees from the federal government. Prior to Fiscal Year 2006, this fund was used to pay costs related to ISAC's role as a guaranty agency. However, since Fiscal Year 2006, the fund has also been the primary source of funding for all agency operating costs, including outreach, research, and all costs of administering state scholarship and grant programs. Revenues come from the federal student loan program that is now in decline, with no new loans made since 2010. ISAC's student loan operations remain self-sustaining, but they cannot continue to fully fund the rest of the agency's core operations.

University Grant Fund 0418. The purpose of this fund is to receive and record monies from original issuance fees and applicable registration fees from private colleges' special license plates. Funding remitted to private institutions during the fiscal year is taken from the proceeds collected during the previous school calendar year.

University Income Funds. Fund used to account for student tuition revenue and other additional charges and fees. Funds are collected, held, and allocated locally by each university and reported to the Governor and the General Assembly annually by the Illinois Board of Higher Education.

Used Tire Management Fund 0294. A portion of this fund is expended by the Prairie Research Institute at the University of Illinois. Revenue is received from the sale of used tires and penalties or damages for violation of the Environmental Protection Act.

APPENDIX D

ILLINOIS HIGHER EDUCATION OPERATIONS FUNDING SINCE FISCAL YEAR 2002

Appendix D

Illinois Higher Education Operations Funding since Fiscal Year 2002

In Fiscal Year 2002, Illinois appropriated \$2.417 billion to operations for higher education (excluding SURS). Monetary Award Program funding covered 100 percent of public university weighted tuition and fees and 100 percent of eligible applicants. State funds covered 72 percent of university costs, with the remaining 28 percent coming from students. State funds covered 27.4 percent of community college costs, with 30.6 percent coming from students and the remaining funds covered by local property taxes.

Fiscal Year 2020 was a very good year for higher education funding. The increase in funding was the largest percentage increase since at least 1990. And the Fiscal Year 2021 and 2022 budgets maintained the same appropriation level for most lines, while providing important increases for MAP and new investments for *College Illinois!*

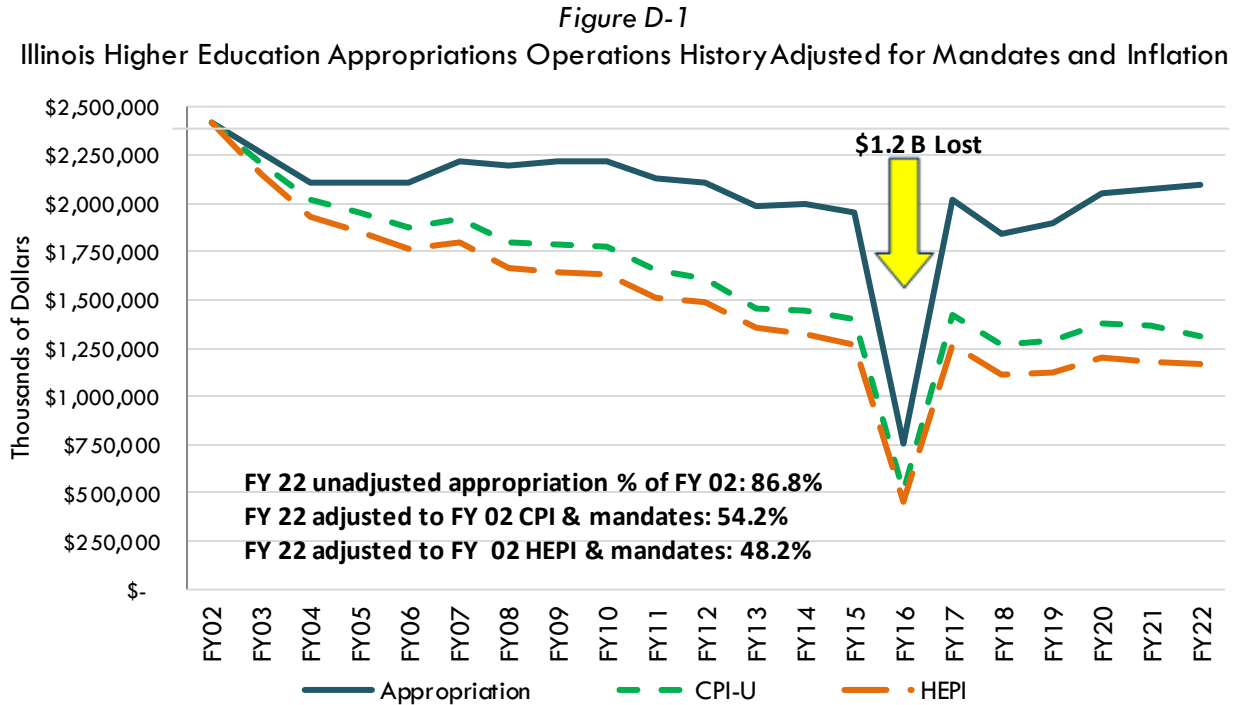
However, this came after a long decline. Fiscal Year 2020 was only the second year since Fiscal year 2002 that the increase was more than inflation. In the period since Fiscal Year 2002 higher education funding declined significantly in absolute terms but the decline in buying power has been even more profound. In Fiscal Year 2022 total higher education general funds and personal property replacement tax (community college) appropriations were \$2.1 billion. However, after accounting for inflation (CPI-U) and new unfunded mandates imposed in the period since Fiscal Year 2002, this amounted to just \$1.31 billion, making effective buying power in Fiscal Year 2022 just 54.2 percent of what it was in Fiscal Year 2002. In Fiscal Year 2022, the maximum MAP grant will cover just 33 percent of average weighted tuition and fees at public universities and 38% at community colleges. In addition, during the budget impasse, universities and community colleges received just 30 percent of Fiscal Year 2015 funding, a cut of \$1.2 billion to higher education overall.

In addition to the reduction in funding and the corrosive effect of inflation since Fiscal Year 2002, higher education has experienced a series of unfunded mandates and pressures. This includes:

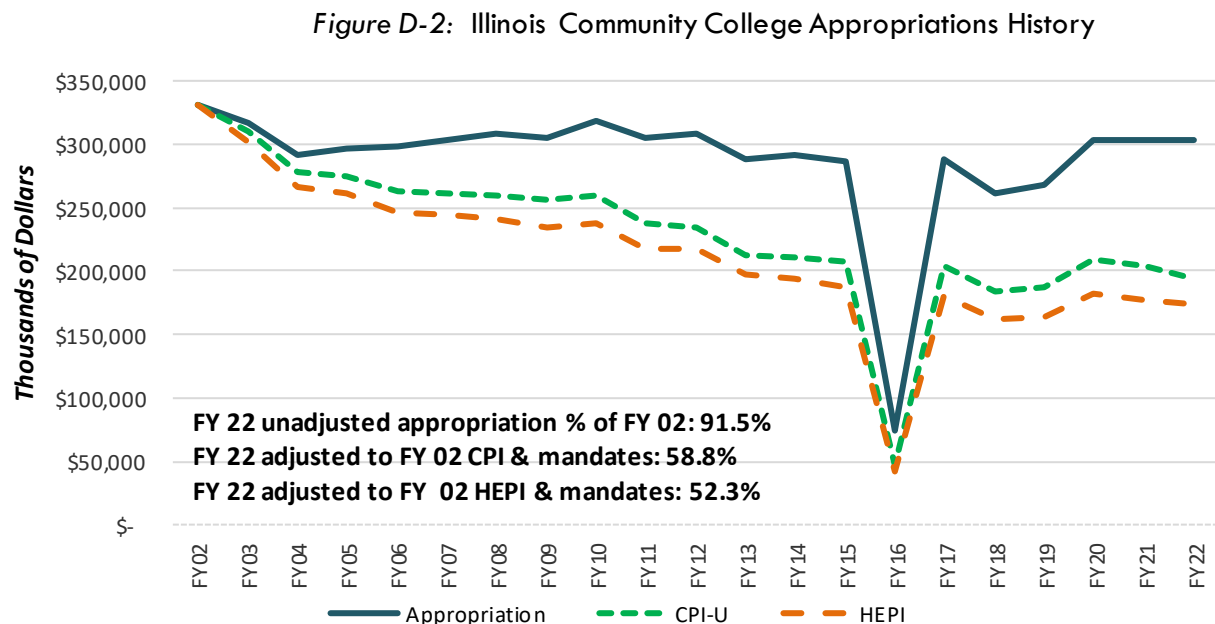
- Retirement rules were changed to require employers to cover the normal cost of any salary increases in plan year of more than six percent, although exceptions were made for factors such as promotions.
- Employers have become responsible for the employee normal cost on the amount earned more than Governor's salary.
- Since Fiscal year 2008, Universities have required to pay \$45 million annually for employee health insurance costs which previously had been fully covered by state health care appropriations.
- A three percent management fee must be paid to the Capital Development Board on projects they manage. In most cases universities could manage projects themselves and save the fee. They already manage project not funded through state appropriations.
- While procurement rules were loosened, some remain costly and burdensome.
- With limited regular capital renewal funding since Fiscal Year 2004, universities and community colleges have had to use shrinking state funds and increase tuition and fees on students to cover facility maintenance.
- The state stopped funding waivers of tuition and fees for veterans and National Guard members but continued to require public universities and community colleges to waive

those costs. More recently, the cost of waivers at community colleges is now covered by a grant to ICCB. However, the state does not reimburse universities for costs for these two programs.

The cumulative results are shown in Figure D-1.

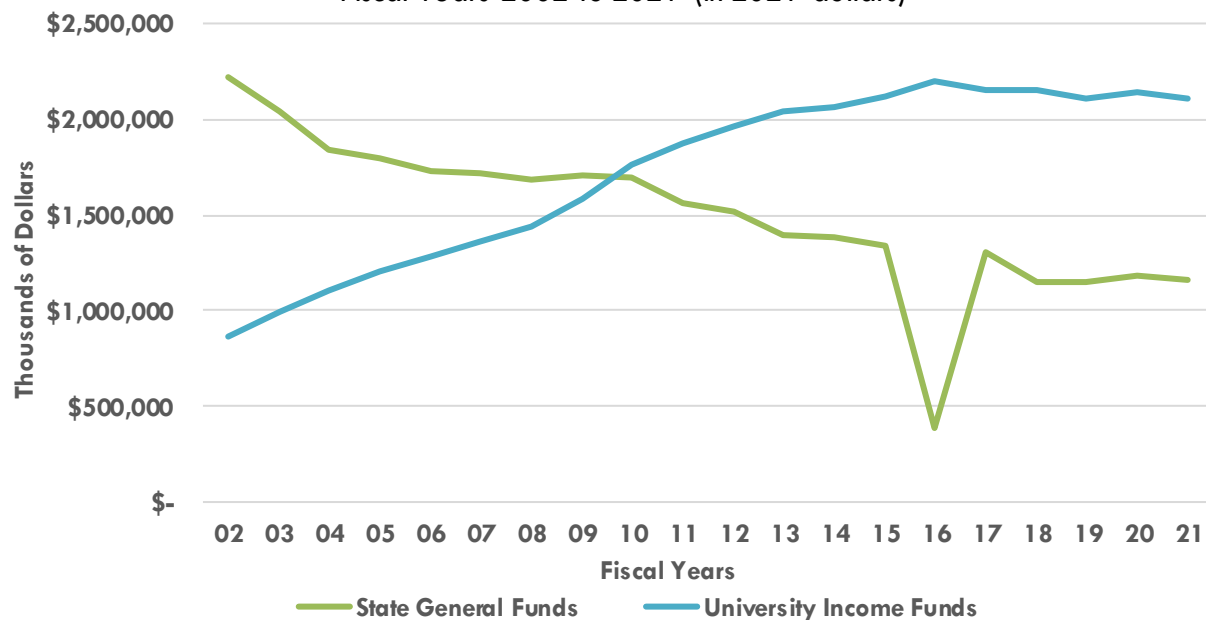


Community colleges experienced the same decline in support as public universities since Fiscal Year 2002. State funding in Fiscal Year 2022 is only worth 58.8 percent of the buying power of Fiscal Year 2002 funding.



To continue to pursue their missions and provide students a quality education, universities and community colleges had to look to student tuition and fees. In Fiscal Year 2021, state funds covered just 35.5 percent of university costs while tuition and fees covered the remaining 64.5 percent. In Fiscal Year 2020, the State covered just 15.8 percent of community college costs.

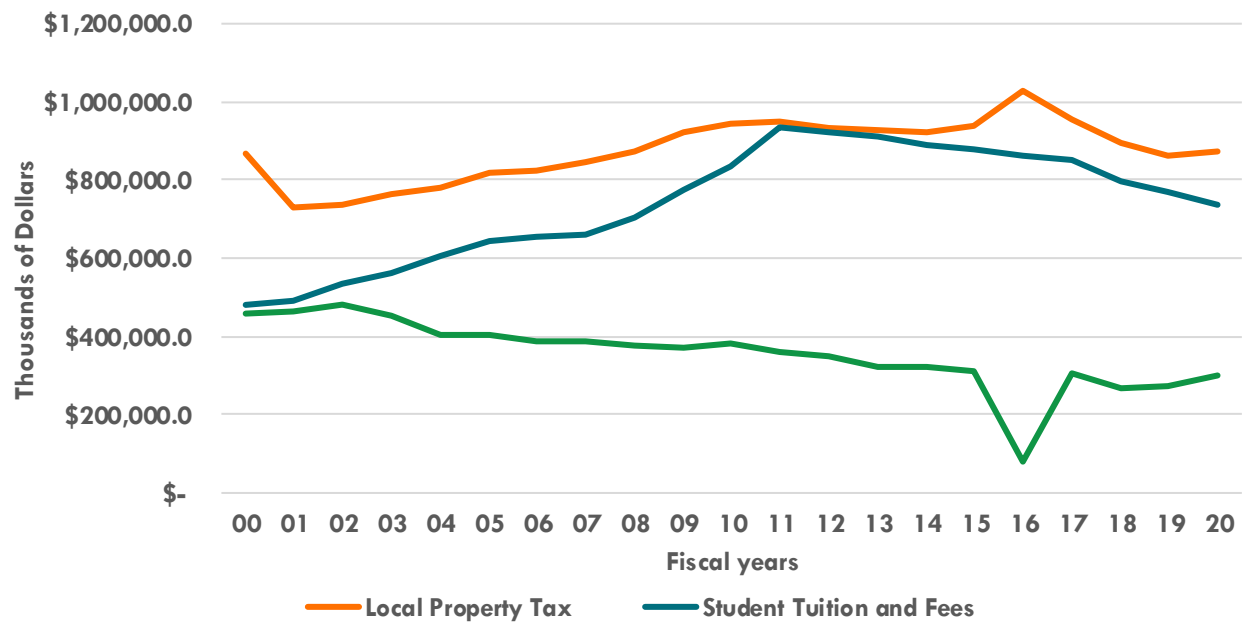
Figure D-3: Trends in Educational and Related Revenues at Illinois Public Universities
Fiscal Years 2002 to 2021 (in 2021 dollars)



Source: RAMP Data Request

While community colleges were established with the expectation that a third of funding would come from the State, in Fiscal Year 2002 state funding covered just 27.4 percent of their costs. That support declined even further to just 15.8 percent in Fiscal Year 2020. See Figure D-4 (next page).

Figure D-4: Trends in Educational and Related Revenues at Illinois Community Colleges
Fiscal Years 2000 to 2020 (in 2020 dollars)



Source: ICCB Data Book

APPENDIX E

PUBLIC UNIVERSITY CAPITAL AND DEFERRED MAINTENANCE PICTORIAL

Public University Capital and Deferred Maintenance Pictorial

Water Damage



Water main break



Water damage & efflorescence on limestone



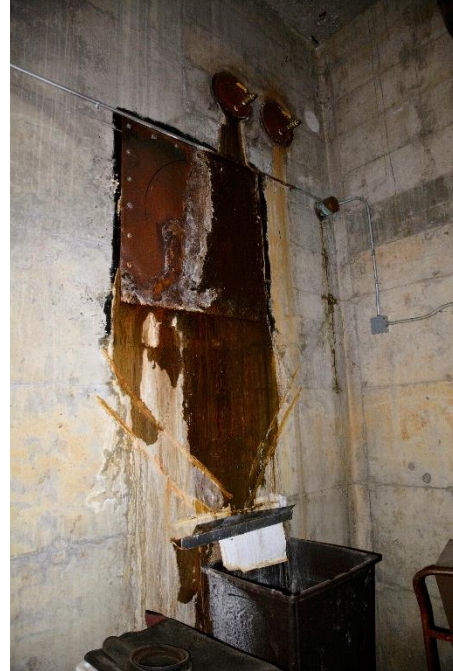
Ceiling leak (with improvised drainage system)



Drywall damage



Water damage



Water damage

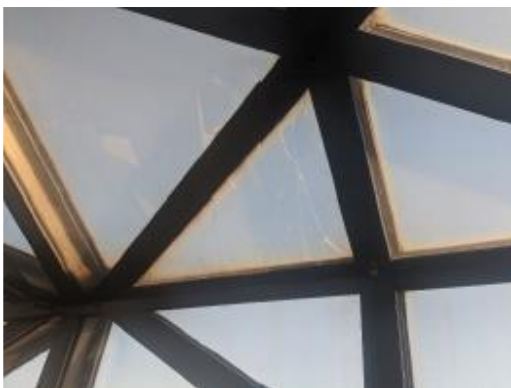


Flooded auditorium



Mold from roof leak

Window & Roof Damage



Cracked skylight



Roof damage



Aluminum cap damage & gasket popping out



Displaced coping, damaged stone, wall exposed to elements



Deteriorating roof patches

Corrosion and Pipe Damage



Corroded pipes



Corrosion from leak



Corrosion



Pipe corrosion

Electrical Equipment



*Transformer from the 1950s
(with exposed live copper)*



Overwhelmed powerlines



Antique screw-in fuse box (1940s)



Antique transformer (1940s)

Structural Damage



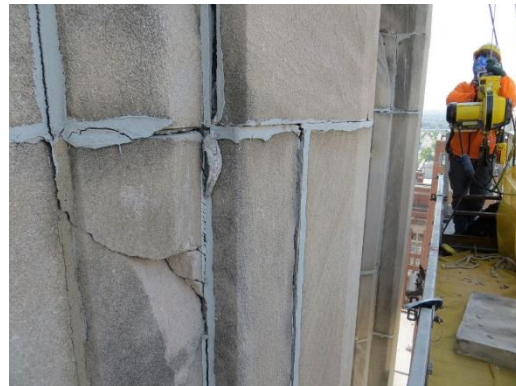
Masonry damage



Displaced coping, fallen stone, 5" gap



Spalling masonry and open joints



Damaged masonry



Temporary wall reinforcement



Displaced & loose stone



Rusted brackets, concrete pulling away



Exposed rebar

General Public Safety



Concrete damage



Sidewalk damage



Open second floor railing



Damaged entry stair tread

APPENDIX F

ADDITIONAL SUPPORTING INFORMATION

APPENDIX F

Additional Supporting Information

IBHE Statutory Requirements

Pursuant to the Board of Higher Education Act (110 ILCS 205), the Illinois Board of Higher Education is required to annually submit to the Governor and the General Assembly budget recommendations for the ensuing fiscal year budget for higher education programs. In development of the Fiscal Year 2022 Budget Recommendations, IBHE staff facilitated the collection of financial data and held budget meetings with each of the public universities and agency for whom IBHE makes budget recommendations. The Board's recommendations are based upon receiving budget submissions from each public university, the Illinois Community College Board, Illinois Student Assistance Commission, the Illinois Mathematics and Science Academy, University Center of Lake County, and the State University Civil Service Commission for operation, capital and grant program needs as well as updates from the State University Retirement System on the amount of funding required to be provided to them by state law.

APPENDIX G

FISCAL YEAR 2023 OPERATING TABLES AND CAPITAL RECOMMENDATION

Table G-1
FY 2023
Higher Education Operations and Grants
General Funds
(in thousands of dollars)

	FY2020 Final Appropriations	FY2021 Final Appropriations	FY2022 Final Appropriations	FY2023 IBHE Recommendations	FY22 to FY23 Dollar Change	Percent Change
Institutional Operations and Grants	\$ 1,942,906.9	\$ 1,972,906.9	\$ 1,993,406.2	\$ 2,132,499.1	\$ 139,092.9	7.0%
Universities	\$ 1,157,861.0	\$ 1,157,861.0	\$ 1,158,386.0	\$ 1,216,783.2	\$ 58,397.2	5.0%
Community Colleges	197,266.2	197,266.2	197,266.2	205,548.1	8,281.9	4.2%
Adult Education/Postsecondary Career and Technical Education	51,957.1	51,957.1	51,957.1	54,555.0	2,597.9	5.0%
Illinois Student Assistance Commission	504,641.2	534,641.2	552,865.5	620,702.9	67,837.4	12.3%
Illinois Mathematics and Science Academy	18,943.9	18,943.9	18,943.9	19,891.1	947.2	5.0%
State Universities Civil Service System	1,114.7	1,114.7	1,114.7	1,148.2	33.5	3.0%
Board of Higher Education	11,122.8	11,122.8	12,872.8	13,870.6	997.8	7.8%
State Universities Retirement System	1,644,123.1	1,785,389.8	1,888,113.2	1,905,504.8	17,391.6	0.9%
Community College Health Insurance Fund	4,431.1	4,622.8	4,834.2	4,937.8	103.6	2.1%
State Contribution to SURS (General Funds Only)	1,639,692.0	1,780,767.0	1,883,279.0	1,900,567.0	17,288.0	0.9%
TOTAL	\$ 3,587,030.0	\$ 3,758,296.7	\$ 3,881,519.4	\$ 4,038,003.9	\$ 156,484.5	4.0%

Source of Appropriated Funds

General Revenue Fund	2,307,320.0	2,478,395.0	2,601,381.3	2,688,304.0	86,922.7	3.3%
Education Assistance Fund	1,279,710.0	1,279,901.7	1,280,138.1	1,349,699.9	69,561.8	5.4%
TOTAL	3,587,030.0	3,758,296.7	3,881,519.4	4,038,003.9	156,484.5	4.0%

Table G-2
FY 2023
Higher Education Operations and Grants*
All Appropriated Funds

(in thousands of dollars)

	FY2020 Final Appropriations	FY2021 Final Appropriations	FY2022 Final Appropriations	FY2023 IBHE Recommendations	FY22 to FY23 Dollar Change	Percent Change
Total Institutional Operations and Grants	\$ 2,399,622.6	\$ 2,484,251.5	\$ 2,661,402.3	\$ 2,825,788.2	\$ 164,385.9	6.2%
Universities	\$ 1,167,957.0	\$ 1,169,146.9	\$ 1,178,862.7	\$ 1,237,259.9	\$ 58,397.2	5.0%
Illinois Community College Board and Community Colleges	314,811.2	334,136.2	377,161.2	400,721.6	23,560.4	6.2%
Adult Education/Postsecondary Career and Technical Education	95,207.1	98,207.1	100,757.1	103,355.0	2,597.9	2.6%
Illinois Student Assistance Commission	779,674.9	809,674.9	861,751.2	924,553.1	62,801.9	7.3%
Illinois Mathematics and Science Academy	22,754.9	22,868.9	22,868.9	23,816.1	947.2	4.1%
State Universities Civil Service System	1,114.7	1,114.7	1,114.7	1,148.2	33.5	3.0%
Illinois Board of Higher Education	18,102.8	49,102.8	118,886.5	134,934.3	16,047.8	13.5%
State Universities Retirement System	1,859,123.1	2,000,389.8	2,106,113.2	2,123,504.8	17,391.6	0.8%
Community College Health Insurance Fund	4,431.1	4,622.8	4,834.2	4,937.8	103.6	2.1%
State Contribution to SURS (General Funds Only)*	1,639,692.0	1,780,767.0	1,883,279.0	1,900,567.0	17,288.0	0.9%
State Contribution to SURS (State Pension Fund Estimate)	215,000.0	215,000.0	218,000.0	218,000.0	-	0.0%
TOTAL	\$ 4,258,745.7	\$ 4,484,641.3	\$ 4,767,515.5	\$ 4,949,293.0	\$ 181,777.5	3.8%

Source of Appropriated Funds

General Revenue	3,587,030.0	3,758,296.7	3,881,519.4	4,038,003.9	156,484.5	4.0%
General Revenue Fund	2,307,320.0	2,478,395.0	2,601,381.3	2,688,304.0	86,922.7	3.3%
Education Assistance Fund	1,279,710.0	1,279,901.7	1,280,138.1	1,349,699.9	69,561.8	5.4%
Other State Funds	346,537.0	347,840.9	360,362.7	368,691.2	8,328.5	2.3%
Federal Funds	325,178.7	378,503.7	525,633.4	542,597.9	16,964.5	3.2%
TOTAL	4,258,745.7	4,484,641.3	4,767,515.5	4,949,293.0	181,777.5	3.8%

Table G-3						
FY 2023						
Higher Education Operations and Grants						
Other Appropriated Fund Sources						
(in thousands of dollars)						
	FY2020 Final Appropriations	FY2021 Final Appropriations	FY2022 Final Appropriations	FY2023 IBHE Recommendations	FY22 to FY23 Dollar Change	Percent Change
Other State Funds	346,537.0	347,840.9	360,362.7	368,691.2	8,328.5	2.3%
CSU Education Improvement Fund	1,600.0	3,000.0	3,000.0	3,000.0	-	0.0%
CSU, SIU, & U of I - General Professions Dedicated Fund	2,057.0	2,057.0	2,057.0	2,057.0	-	0.0%
EIU, ISU, NIU, SIU, & U of I - State College and University Trust Fund	473.0	351.0	331.0	331.0	-	0.0%
U of I - Coal Technology Development Assistance			8,175.0	8,175.0	-	0.0%
U of I - Emergency Public Health Fund	400.0	300.0	300.0	300.0	-	0.0%
U of I - Fire Prevention Fund	4,216.0	4,427.9	4,694.7	4,694.7	-	0.0%
U of I - Hazardous Waste Research Fund	500.0	500.0	500.0	500.0	-	0.0%
U of I - Pet Population Control	250.0	250.0	250.0	250.0	-	0.0%
U of I - Used Tire Management Fund	600.0	400.0	400.0	400.0	-	0.0%
ICCB - Personal Property Tax Replacement Fund	105,570.0	105,570.0	105,570.0	110,848.5	5,278.5	5.0%
ISAC - Community Behavioral Health Care Provider Loan Repayment				5,000.0	5,000.0	0.0%
ISAC - Contracts and Grants Fund	10,000.0	10,000.0	10,000.0	8,000.0	(2,000.0)	-20.0%
ISAC - Energy Transfer Assistance Fund	-	-	1,100.0	1,100.0	-	0.0%
ISAC - IL Future Teachers Corps Scholarship Fund	100.0	100.0	100.0	100.0	-	0.0%
ISAC - Illinois National Guard Grant Fund	20.0	20.0	20.0	20.0	-	0.0%
ISAC - Optometric Licensing & Disciplinary Board Fund	50.0	50.0	50.0	50.0	-	0.0%
ISAC - University Grant Fund	110.0	110.0	110.0	110.0	-	0.0%
ISAC Accounts Receivable Fund	300.0	300.0	300.0	300.0	-	0.0%
IMSA - Income Fund	3,811.0	3,925.0	3,925.0	3,925.0	-	0.0%
IBHE - Academic Quality Assurance Fund	600.0	600.0	600.0	600.0	-	0.0%
IBHE - Data & Research Recovery	30.0	30.0	30.0	30.0	-	0.0%
IBHE - Distance Learning Fund	100.0	100.0	100.0	150.0	50.0	50.0%
IBHE - PBVS Quality Assurance Fund	650.0	650.0	650.0	650.0	-	0.0%
IBHE - Private College Academic Quality Assurance Fund	100.0	100.0	100.0	100.0	-	0.0%
SURS - State Pension Fund	215,000.0	215,000.0	218,000.0	218,000.0	-	0.0%
Federal Funds	325,178.7	378,503.7	525,633.4	542,597.9	16,964.5	3.2%
U of I - Water Reports*			769.0	769.0	-	0.0%
ICCB - College Bridge Programs*			10,000.0	10,000.0	-	0.0%
ICCB - Adult Education Fund	24,500.0	27,825.0	28,400.0	28,400.0	-	0.0%
ICCB - Career and Technical Education Fund	20,000.0	20,000.0	22,000.0	22,000.0	-	0.0%
ICCB - Contracts and Grants Fund	10,000.0	29,000.0	62,000.0	72,000.0	10,000.0	16.1%
ICCB - Federal Trust Fund	525.0	525.0	525.0	525.0	-	0.0%
ICCB - Instructional Development Revolving Fund	100.0	100.0	100.0	100.0	-	0.0%
ICCB - High School Equivalency Testing Fund	100.0	100.0	100.0	100.0	-	0.0%
ISAC - Federal State Student Incentive Trust Fund	13,400.0	13,400.0	13,400.0	13,400.0	-	0.0%
ISAC - Golden Apple Accelerators*			4,250.0	4,250.0	-	0.0%
ISAC - Golden Apple Scholars Program*			3,502.0	3,502.0	-	0.0%
ISAC - Student Loan Operating Fund	251,053.7	251,053.7	276,053.7	268,018.2	(8,035.5)	-2.9%
IBHE - Federal Grants Fund	5,500.0	36,500.0	103,500.0	118,500.0	15,000.0	14.5%
IBHE - Grow Your Own*			1,033.7	1,033.7	-	0.0%
TOTAL	\$ 671,715.7	\$ 726,344.6	\$ 885,996.1	\$ 911,289.1	\$ 25,293.0	2.9%

Table G-4 A						
FY 2023						
University Operations and Grants, Including statutorily required performance adjustment**						
General Funds						
(in thousands of dollars)						
	FY2020 Final Appropriations	FY2021 Final Appropriations	FY2022 Final Appropriations	FY2023 After Statutory Perf. Adjustment	FY22 to FY23 Dollar Change	Percent Change
Chicago State University	\$ 35,018.9	\$ 35,018.9	\$ 35,018.9	\$ 37,346.5	\$ 2,327.6	6.6%
Eastern Illinois University	41,424.3	41,424.3	41,924.3	44,237.0	2,312.7	5.5%
Governors State University	23,193.6	23,193.6	23,193.6	26,029.8	2,836.2	12.2%
Illinois State University	69,619.3	69,619.3	69,619.3	74,366.3	4,747.0	6.8%
Northeastern Illinois University	35,566.9	35,566.9	35,566.9	39,613.7	4,046.8	11.4%
Northern Illinois University	87,804.4	87,804.4	87,804.4	94,894.0	7,089.6	8.1%
Southern Illinois University*	193,630.6	193,630.6	193,630.6	201,110.2	7,479.6	3.9%
University of Illinois*	622,015.0	622,015.0	622,040.0	644,939.2	22,899.2	3.7%
Western Illinois University	49,588.0	49,588.0	49,588.0	54,246.5	4,658.5	9.4%
Total	\$ 1,157,861.0	\$ 1,157,861.0	\$ 1,158,386.0	\$ 1,216,783.1	\$ 58,397.1	5.0%

Source of Appropriated Funds						
General Revenue	1,157,861.0	1,157,861.0	1,158,386.0	1,216,783.2	58,397.2	5.0%
General Revenue Fund	58,251.7	58,251.7	58,751.7	58,751.7	-	0.0%
Education Assistance Fund	1,099,609.3	1,099,609.3	1,099,634.3	1,158,031.5	58,397.2	5.3%

*University of Illinois and Southern Illinois University system totals

**BHE recommendations do not include these adjustments.

Table G-4 B

FY 2023

University Appropriations, Including Statutorily required performance adjustment^^

General Funds

(in thousands of dollars)

	FY 2022 Final Appropriations	Percent Increase State Funding at Recommended	FY 2023 Recommended Increase	FY 2023 Performance 0.5% Set-Aside	FY2023 Performance Net Change	FY2023 After Statutory Perf. Adjustment	FY22 to FY23 Net Dollar Change	FY22 to FY23 Percent Change
Chicago State University	35,018.9	6.8%	2,385.3	175.1	(57.7)	37,346.5	2,327.6	6.6%
Eastern Illinois University	41,924.3	5.6%	2,332.6	209.6	(19.9)	44,237.0	2,312.7	5.5%
Governors State University	23,193.6	12.0%	2,785.1	116.0	51.1	26,029.8	2,836.2	12.2%
Illinois State University	69,619.3	6.8%	4,728.5	348.1	18.5	74,366.3	4,747.0	6.8%
Northeastern Illinois University	35,566.9	11.4%	4,043.2	177.8	3.6	39,613.7	4,046.8	11.4%
Northern Illinois University	87,804.4	8.2%	7,209.0	439.0	(119.4)	94,894.0	7,089.6	8.1%
Western Illinois University	49,588.0	9.4%	4,676.4	247.9	(17.9)	54,246.5	4,658.5	9.4%
Southern Illinois University*	193,630.6	4.0%	7,674.2	968.2	(194.6)	201,110.2	7,479.6	3.9%
Southern Illinois - Carbondale *	134,659.7	3.0%	3,983.8	673.3	(192.1)	138,451.3	3,791.7	2.8%
Southern Illinois - Edwardsville	58,970.9	6.3%	3,690.4	294.9	(2.5)	62,658.8	3,687.9	6.3%
University of Illinois*	622,040.0	3.6%	22,562.9	3,110.2	336.3	644,939.2	22,899.2	3.7%
University of Illinois - Chicago ^	291,186.7	5.5%	16,122.8	1,455.9	113.6	307,423.1	16,236.4	5.6%
University of Illinois - Springfield ^	22,252.2	4.6%	1,015.9	111.3	15.2	23,283.3	1,031.1	4.6%
University of Illinois - Urbana/Champaign ^	308,601.1	1.8%	5,424.2	1,543.0	207.5	314,232.8	5,631.7	1.8%
Total	1,158,386.0	5.0%	\$ 58,397.1	\$ 5,791.9	\$ -	\$ 1,216,783.1	\$ 58,397.1	5.0%

* University of Illinois and Southern Illinois University system totals

**SIU system office is allocated on a pro-rated basis to each campus, SIU School of Medicine is included with the Carbondale Campus.

^ University of Illinois Administration is allocated on a pro-rated basis to each campus.

^^IBHE Recommendations do not include these adjustments

Table G-5 FY 2023 Community College Operations and Grants Appropriated Funds <i>(in thousands of dollars)</i>						
	FY2020 Final Appropriations	FY2021 Final Appropriations	FY2022 Final Appropriations	FY2023 IBHE Recommendations	FY22 to FY23 Dollar Change	Percent Change
Unrestricted Grants to Colleges	\$ 265,316.9	\$ 265,316.9	\$ 265,316.9	\$ 278,537.4	\$ 13,220.5	5.0%
Base Operating Grants	179,940.2	179,940.2	179,940.2	188,937.2	8,997.0	5.0%
Performance Based Funding	359.0	359.0	359.0	359.0	-	0.0%
Designated Grant - City Colleges of Chicago	13,265.4	13,265.4	13,265.4	13,928.7	663.3	5.0%
Small College Grants	548.4	548.4	548.4	548.4	-	0.0%
Equalization Grants	71,203.9	71,203.9	71,203.9	74,764.1	3,560.2	5.0%
Other Grants and Initiatives	\$ 34,927.1	\$ 53,875.1	\$ 96,875.1	\$ 106,875.1	\$ 10,000.0	10.3%
Lincoln's Challenge Scholarships	60.2	60.2	60.2	60.2	-	0.0%
East St. Louis Higher Education Center	1,457.9	1,457.9	1,457.9	1,457.9	-	0.0%
Veterans Shortfall Grants	4,264.6	4,264.6	4,264.6	4,264.6	-	0.0%
Alternative Schools Network	3,000.0	3,000.0	3,000.0	3,000.0	-	0.0%
High School Equivalency Testing	1,200.0	1,148.0	1,148.0	1,148.0	-	0.0%
P-20 Council	150.0	150.0	150.0	150.0	-	0.0%
Competitive Grant Program	23,794.4	23,794.4	23,794.4	23,794.4	-	0.0%
Grants for Transitional Math Development	1,000.0	1,000.0	1,000.0	1,000.0	-	0.0%
Governor's Emergency Education Relief Fund	-	19,000.0	27,000.0	27,000.0	-	0.0%
Early Childhood Programs			25,000.0	35,000.0	10,000.0	40.0%
College Bridge Programs			10,000.0	10,000.0	-	0.0%
TOTAL	\$ 300,244.0	\$ 319,192.0	\$ 362,192.0	\$ 385,412.5	\$ 23,220.5	6.4%

Illinois Community College Board Operations						
Administration (General Funds)	\$ 2,592.2	\$ 2,644.2	\$ 2,644.2	\$ 2,984.1	\$ 339.9	12.9%
Office Operations	2,031.9	2,083.9	2,083.9	2,423.8	339.9	16.3%
Illinois Longitudinal Data System	560.3	560.3	560.3	560.3	-	0.0%
Administration (Federal Funds)	\$ 11,975.0	\$ 12,300.0	\$ 12,325.0	\$ 12,325.0	\$ -	0.0%
ICCB Adult Education Administration	1,250.0	1,575.0	1,600.0	1,600.0	-	0.0%
ICCB Contracts and Grants Fund	10,000.0	10,000.0	10,000.0	10,000.0	-	0.0%
ICCB Federal Trust Fund	525.0	525.0	525.0	525.0	-	0.0%
ICCB Instructional Dev./Enhancement Revolving Fund	100.0	100.0	100.0	100.0	-	0.0%
High School Equivalency Testing Fund	100.0	100.0	100.0	100.0	-	0.0%
TOTAL	\$ 14,567.2	\$ 14,944.2	\$ 14,969.2	\$ 15,309.1	\$ 339.9	2.3%

GRAND TOTAL	\$ 314,811.2	\$ 334,136.2	\$ 377,161.2	\$ 400,721.6	\$ 23,560.4	6.2%
--------------------	---------------------	---------------------	---------------------	---------------------	--------------------	-------------

Source of Appropriated Funds						
General Funds	197,266.2	197,266.2	197,266.2	205,548.1	8,281.9	4.2%
General Revenue Fund	51,692.1	51,692.1	51,692.1	52,695.3	1,003.2	1.9%
Education Assistance Fund	145,574.1	145,574.1	145,574.1	152,852.8	7,278.7	5.0%
Personal Property Tax Replacement Fund	105,570.0	105,570.0	105,570.0	110,848.5	5,278.5	5.0%
Federal Funds	11,975.0	31,300.0	74,325.0	84,325.0	10,000.0	13.5%
TOTAL	\$ 314,811.2	\$ 334,136.2	\$ 377,161.2	\$ 400,721.6	\$ 23,560.4	6.2%

Table G-6**FY 2023****Adult Education and Postsecondary Career and Technical Education****Appropriated Funds***(in thousands of dollars)*

	FY2020 Final Appropriations	FY2021 Final Appropriations	FY2022 Final Appropriations	FY2023 Final Appropriations	FY22 to FY23 Dollar Change	Percent Change
Adult Education	\$ 57,137.7	\$ 60,137.7	\$ 60,687.7	\$ 62,382.1	\$ 1,694.4	2.8%
<u>State Appropriated Funds</u>	<u>33,887.7</u>	<u>33,887.7</u>	<u>33,887.7</u>	<u>35,582.1</u>	<u>1,694.4</u>	<u>5.0%</u>
Basic Grants	22,651.0	22,651.0	22,651.0	23,783.6	1,132.6	5.0%
Performance Based Grants	11,236.7	11,236.7	11,236.7	11,798.5	561.8	5.0%
Federal Adult Education Grants	23,250.0	26,250.0	26,800.0	26,800.0	-	0.0%
Postsecondary Career and Technical Education*	\$ 38,069.4	\$ 38,069.4	\$ 40,069.4	\$ 40,972.9	\$ 903.5	2.3%
<u>State Appropriated Funds</u>	<u>18,069.4</u>	<u>18,069.4</u>	<u>18,069.4</u>	<u>18,972.9</u>	<u>903.5</u>	<u>5.0%</u>
Career and Technical Education Programs	18,069.4	18,069.4	18,069.4	18,972.9	903.5	5.0%
Federal Career and Technical Education Grants	20,000.0	20,000.0	22,000.0	22,000.0	-	0.0%
TOTAL	\$ 95,207.1	\$ 98,207.1	\$ 100,757.1	\$ 103,355.0	\$ 2,597.9	2.6%

Source of Appropriated Funds

General Funds	\$ 51,957.1	\$ 51,957.1	\$ 51,957.1	\$ 54,555.0	\$ 2,597.9	5.0%
General Revenue Fund	51,957.1	51,957.1	51,957.1	54,555.0	2,597.9	5.0%
Federal Funds	\$ 43,250.0	\$ 46,250.0	\$ 48,800.0	\$ 48,800.0	-	0.0%
ICCB Adult Education Fund	23,250.0	26,250.0	26,800.0	26,800.0	-	0.0%
ICCB Career and Technical Education Fund	20,000.0	20,000.0	22,000.0	22,000.0	-	0.0%
TOTAL	\$ 95,207.1	\$ 98,207.1	\$ 100,757.1	\$ 103,355.0	\$ 2,597.9	2.6%

Table G-7

FY 2023

Illinois Student Assistance Commission

All Funds

(in thousands of dollars)

	FY2020 Final Appropriations	FY2021 Final Appropriations	FY2022 Final Appropriations	FY2023 IBHE Recommendations	FY22 to FY23 Dollar Change	Percent Change
Monetary Award Program	\$ 451,341.9	\$ 451,341.9	\$ 479,566.2	\$ 529,566.2	\$ 50,000.0	10.4%
General Funds	451,341.9	451,341.9	479,566.2	529,566.2	50,000.0	10.4%
Other Grant and Scholarship Programs (State Funded)	\$ 46,581.6	\$ 76,581.6	\$ 66,581.6	\$ 84,416.7	\$ 17,835.1	26.8%
AIM HIGH	35,000.0	35,000.0	35,000.0	35,000.0	-	0.0%
College Illinois! State Contribution	-	30,000.0	20,000.0	30,000.0	10,000.0	50.0%
Higher Education License Plate Grants (HELP)	110.0	110.0	110.0	110.0	-	0.0%
National Guard Grants: Other Funds	20.0	20.0	20.0	20.0	-	0.0%
Minority Teachers of Illinois Scholarships	1,900.0	1,900.0	1,900.0	4,200.0	2,300.0	121.1%
Dependents Grants	1,273.3	1,273.3	1,273.3	1,273.3	-	0.0%
Teacher Loan Repayment Program	439.9	439.9	439.9	975.0	535.1	121.6%
Optometric Education Scholarship Program (OSF)	50.0	50.0	50.0	50.0	-	0.0%
Golden Apple Scholars of Illinois (OSF)	100.0	100.0	100.0	100.0	-	0.0%
Golden Apple Scholars of Illinois	6,498.0	6,498.0	6,498.0	6,498.0	-	0.0%
Golden Apple Accelerators Program	750.0	750.0	750.0	750.0	-	0.0%
Veterans' Home Loan Repayment	26.4	26.4	26.4	26.4	-	0.0%
Nurse Educator Loan Repayment	264.0	264.0	264.0	264.0	-	0.0%
Exonerated Persons Grants	150.0	150.0	150.0	150.0	-	0.0%
Community Behavioral Health Care Provider Loan Repayment Program	-	-	-	5,000.0	5,000.0	0.0%
Other Grant and Scholarship Programs (Federally Funded)	\$ 13,400.0	\$ 13,400.0	\$ 21,152.0	\$ 21,152.0	\$ -	0.0%
Federal Grant Funding	13,000.0	13,000.0	13,000.0	13,000.0	-	0.0%
John R. Justice Loan Repayment	300.0	300.0	300.0	300.0	-	0.0%
Federal Paul Douglas Collections (Refund to ED)	100.0	100.0	100.0	100.0	-	0.0%
Golden Apple Scholars of Illinois (ARPA)	-	-	3,502.0	3,502.0	-	0.0%
Golden Apple Accelerators Program (ARPA)	-	-	4,250.0	4,250.0	-	0.0%
Administration (General Funds)	\$ 6,997.7	\$ 6,997.7	\$ 6,997.7	\$ 12,000.0	\$ 5,002.3	71.5%
Agency Administration	3,500.0	3,500.0	3,500.0	6,000.0	2,500.0	71.4%
Outreach/Research/Training	3,497.7	3,497.7	3,497.7	6,000.0	2,502.3	71.5%
Administration (Other Appropriated Funds)	\$ 10,300.0	\$ 10,300.0	\$ 10,300.0	\$ 8,300.0	\$ (2,000.0)	-19.4%
Collections Activities (ISAC Accounts Receivable Fund)	300.0	300.0	300.0	300.0	-	0.0%
Contracts & Grants Fund	10,000.0	10,000.0	10,000.0	8,000.0	(2,000.0)	-20.0%
Energy Transfer Assistance	-	-	1,100.0	1,100.0	-	0.0%
Total, Grant Programs and Administration	\$ 528,621.2	\$ 558,621.2	\$ 584,597.5	\$ 655,434.9	\$ 70,837.4	12.1%
Federal Loan Program Administration and Loan Reimbursements*	\$ 251,053.7	\$ 251,053.7	\$ 276,053.7	\$ 268,018.2	\$ (8,035.5)	-2.9%
TOTAL	\$ 779,674.9	\$ 809,674.9	\$ 860,651.2	\$ 923,453.1	\$ 62,801.9	7.3%

Source of Appropriated Funds

General Funds	\$ 504,641.2	\$ 534,641.2	\$ 552,865.5	\$ 620,702.9	\$ 67,837.4	12.3%
General Revenue Fund	493,489.6	523,489.6	541,713.9	606,716.2	65,002.3	12.0%
Education Assistance Fund	11,151.6	11,151.6	11,151.6	13,986.7	2,835.1	25.4%
Federal Funds	13,400.0	13,400.0	21,152.0	21,152.0	-	0.0%
Student Loan Fund	251,053.7	251,053.7	276,053.7	268,018.2	(8,035.5)	-2.9%
Other State Funds	10,580.0	10,580.0	10,580.0	14,680.0	4,100.0	38.8%
TOTAL	\$ 779,674.9	\$ 809,674.9	\$ 860,651.2	\$ 924,553.1	\$ 63,901.9	7.4%

* Includes funding for the Early Childhood Access Consortium for Equity (ECACE) scholarship.

Table G-8						
FY 2023						
Illinois Mathematics and Science Academy						
All Funds						
(in thousands of dollars)						
	FY2020 Final Appropriations	FY2021 Final Appropriations	FY2022 Final Appropriations	FY2023 IBHE Recommendations	FY22 to FY23 Dollar Change	Percent Change
Illinois Mathematics and Science Academy	\$ 22,754.9	\$ 22,868.9	\$ 22,868.9	\$ 23,816.1	\$ 947.2	4.1%

Source of Appropriated Funds						
General Funds	\$ 18,943.9	\$ 18,943.9	\$ 18,943.9	\$ 19,891.1	\$ 947.2	5.0%
Education Assistance Fund	18,943.9	18,943.9	18,943.9	19,891.1	947.2	5.0%
Income Fund	3,811.0	3,925.0	3,925.0	3,925.0	-	0.0%
TOTAL	\$ 22,754.9	\$ 22,868.9	\$ 22,868.9	\$ 23,816.1	\$ 947.2	4.1%

Table G-9						
FY 2023						
State Universities Civil Service System						
All Funds						
(in thousands of dollars)						
	FY2020 Final Appropriations	FY2021 Final Appropriations	FY2022 Final Appropriations	FY2023 IBHE Recommendations	FY22 to FY23 Dollar Change	Percent Change
Operations	\$ 1,114.7	\$ 1,114.7	\$ 1,114.7	\$ 1,148.2	\$ 33.5	3.0%

Source of Appropriated Funds						
General Fund	\$ 1,114.7	\$ 1,114.7	\$ 1,114.7	\$ 1,148.2	\$ 33.5	3.0%
General Revenue Fund	1,114.7	1,114.7	1,114.7	1,148.2	33.5	3.0%

Table G-10

FY 2023

Illinois Board of Higher Education

All Funds

(in thousands of dollars)

	FY2020 Final Appropriations	FY2021 Final Appropriations	FY2022 Final Appropriations	FY2023 IBHE Recommendations	FY22 to FY23 Dollar Change	Percent Change
Illinois Board of Higher Education	4,285.9	4,285.9	4,535.9	5,005.9	\$ 470.0	10.4%
Operations/Lump Sum*	\$ 3,904.1	\$ 3,904.1	\$ 3,904.1	\$ 4,624.1	\$ 720.0	18.4%
Strategic Planning*	\$ -	\$ -	\$ 250.0	\$ -	\$ (250.0)	-100.0%
Illinois Longitudinal Data System	\$ 381.8	\$ 381.8	\$ 381.8	\$ 381.8	\$ -	0.0%
Institutional Grants & Special Initiatives	\$ 8,316.9	\$ 8,316.9	\$ 9,816.9	\$ 10,394.7	\$ 577.8	5.9%
University Center of Lake County	1,055.7	1,055.7	1,055.7	1,108.5	52.8	5.0%
Quad Cities Graduate Study Center	73.8	73.8	73.8	73.8	-	0.0%
Higher Education Assessment in the Quad Cities	-	-	500.0	500.0	-	0.0%
MyCreditsTransfer	183.3	183.3	183.3	183.3	-	0.0%
Cooperative Work Study Grants	980.5	980.5	980.5	980.5	-	0.0%
Creating Pathways and Access for Student Success (CPASS)	1,433.6	1,433.6	1,433.6	1,433.6	-	0.0%
Illinois Mathematics and Science Fusion Program	95.9	95.9	95.9	95.9	-	0.0%
Diversifying Higher Education Faculty in Illinois (DFI)	1,456.5	1,456.5	1,456.5	1,981.5	525.0	36.0%
Grow Your Own Program	2,466.3	2,466.3	2,466.3	2,466.3	-	0.0%
Nursing School Grants	373.9	373.9	373.9	373.9	-	0.0%
Nurse Educator Fellowships	197.4	197.4	197.4	197.4	-	0.0%
Common Application	-	-	1,000.0	1,000.0	-	0.0%
Federal Funding	\$ 5,500.0	\$ 36,500.0	\$ 104,533.7	\$ 119,533.7	\$ 15,000.0	14.3%
Federal Contracts and Grants	5,500.0	5,500.0	5,500.0	5,500.0	-	0.0%
High Impact Tutoring	-	-	25,000.0	25,000.0	-	0.0%
Governor's Emergency Education Relief Fund	-	31,000.0	43,000.0	43,000.0	-	0.0%
Early Childhood Programs	-	-	30,000.0	45,000.0	15,000.0	50.0%
Grow Your Own Program (ARPA)	-	-	1,033.7	1,033.7	-	0.0%
TOTAL	\$ 18,102.8	\$ 49,102.8	\$ 118,886.5	\$ 134,934.3	\$ 16,047.8	13.5%

*Beginning in Fiscal Year 2023, IBHE is recommending that funding for the Strategic Plan be included in Operations.

Table G-11**FY 2023****State Universities Retirement System****All Funds***(in thousands of dollars)*

	FY2020 Final Appropriations	FY2021 Final Appropriations	FY2022 Final Appropriations	FY2023 IBHE Recommendations	FY22 to FY23 Dollar Change	Percent Change
Contributions to State University Retirement System	1,854,692.0	1,995,767.0	2,101,279.0	2,118,567.0	17,288.0	0.8%
General Funds	1,639,692.0	1,780,767.0	1,883,279.0	1,900,567.0	17,288.0	0.9%
State Pension Fund	215,000.0	215,000.0	218,000.0	218,000.0	-	0.0%
Community College Retirees Health Insurance	4,431.1	4,622.8	4,834.2	4,937.8	103.6	2.1%
TOTAL	\$ 1,859,123.1	\$ 2,000,389.8	\$ 2,106,113.2	\$ 2,123,504.8	\$ 17,391.6	0.8%

Source of Appropriated Funds

General Funds	\$ 1,644,123.1	\$ 1,785,389.8	\$ 1,888,113.2	\$ 1,905,504.8	\$ 17,391.6	0.9%
General Revenue Fund	1,639,692.0	1,780,767.0	1,883,279.0	1,900,567.0	17,288.0	0.9%
Education Assistance Fund	4,431.1	4,622.8	4,834.2	4,937.8	103.6	2.1%
State Pensions Fund	215,000.0	215,000.0	218,000.0	218,000.0	-	0.0%
TOTAL	\$ 1,859,123.1	\$ 2,000,389.8	\$ 2,106,113.2	\$ 2,123,504.8	\$ 17,391.6	0.8%

FY 2023 Table G-12 Public University Allocation					
Public University Allocation	Number of Degree/ Certificate Seeking Undergrads	Number of Pell Recipients	% Pell	\$ Amount per Pell Student	Total \$ Allocation (Pell)
CSU	2,055	1,295	63%	\$ 1,841	\$ 2,385,253
GSU	3,265	1,764	54%	\$ 1,579	\$ 2,785,064
UIC	20,624	10,670	52%	\$ 1,511	\$ 16,122,838
WIU	6,770	3,292	49%	\$ 1,420	\$ 4,676,385
NEIU	6,401	2,977	47%	\$ 1,358	\$ 4,043,200
NIU	12,791	5,619	44%	\$ 1,283	\$ 7,208,995
SIUC	9,668	3,631	38%	\$ 1,097	\$ 3,983,761
EIU	5,936	2,177	37%	\$ 1,071	\$ 2,332,621
UIS	2,807	988	35%	\$ 1,028	\$ 1,015,864
SIUE	10,878	3,707	34%	\$ 995	\$ 3,690,401
ISU	18,229	5,432	30%	\$ 870	\$ 4,728,492
UIUC	33,997	7,946	23%	\$ 683	\$ 5,424,217
Total	133,421	49,499	37%		\$58,397,090

FY 2023 Table G-13 Capital Projects Underway				
Agency	Name of Institution	Project Description	Estimated Total Cost	Status of Project
Illinois Math and Science Academy Projects Underway				
IBHE	Illinois Math and Science Academy	Correct Water Infiltration - Academic Building	\$ 6,293,809	Construction
IBHE	Illinois Math and Science Academy	Replace Heating and Cooling Systems	\$ 3,870,700	Construction
Board of Higher Education Projects Underway				
CSU	Chicago State University	Renovate Robinson Center	\$ 10,579,345	Construction
CSU	Chicago State University	Upgrade Electrical System	\$ 15,113,784	Closeout
CSU	Chicago State University	Elevator Renovation	\$ 2,819,589	Construction
CSU	Chicago State University	Replace Inoperative Boilers	\$ 3,565,000	Construction
CSU	Chicago State University	Repair HVAC and Pool - Jacoby Dickens Center	\$ 6,988,600	Construction
CSU	Chicago State University	Upgrade Fire Alarm System	\$ 3,669,500	Construction
CSU	Chicago State University	Replace Light Poles	\$ 2,000,000	Design
CSU	Chicago State University	Renovate/Construct Nursing Lab, Including a Simulated Hospital	\$ 28,636,300	Design
CSU	Chicago State University	Install Water Piping and Conduit - Cordell Reed Student Center	\$ 350,000	Design
CSU	Chicago State University	Upgrade Parking Lots, Roads and Walkways	\$ 7,136,200	Design
EIU	Eastern Illinois University	Upgrade HVAC/Plumbing Systems - Coleman Hall and Life Sciences Building	\$ 7,754,091	Construction
EIU	Eastern Illinois University	Repair Exterior Masonry, Foundation and Steps	\$ 501,389	Construction
EIU	Eastern Illinois University	Construct New Science Building	\$ 118,836,500	Design
EIU	Eastern Illinois University	Construct an Addition for East-Central Illinois Hub	\$ 1,000,000	Design
EIU	Eastern Illinois University	Repair Utility Tunnel & Upgrade Boiler	\$ 7,475,000	Design
GSU	Governors State University	Campus Roadway and Sidewalk Improvements	\$ 2,247,790	Construction
GSU	Governors State University	Replace Piping System and Renovate Washrooms	\$ 9,815,150	Construction
GSU	Governors State University	Main Building Roof Replacement (Buildings A, B and Performing Arts)	\$ 3,244,940	Construction
GSU	Governors State University	Renovate Facility for Supply Chain Innovation Center and Business Incubator	\$ 400,000	Design
NEIU	Northeastern Illinois University	Construct an Education Building	\$ 80,787,589	Design
NEIU	Northeastern Illinois University	Replace Electric Cable, Phase 1	\$ 1,890,000	Construction

NEIU	Northeastern Illinois University	Replace Campus Roofs	\$ 4,986,803	Design
NEIU	Northeastern Illinois University	Repair/Improvements of Pavements and Parking Structure	\$ 5,130,000	Design
NEIU	Northeastern Illinois University	Upgrade HVAC System - Science Building	\$ 2,653,300	Design
NEIU	Northeastern Illinois University	Repairs and Upgrades to the HVAC System - Lech Walesa Hall	\$ 2,382,996	Design
WIU	Western Illinois University	Performing Arts Center	\$ 93,876,487	Design
WIU	Western Illinois University	Repair and Replace Roofs	\$ 6,150,000	Construction
WIU	Western Illinois University	System Water Piping	\$ 2,527,000	Construction
WIU	Western Illinois University	Replace Chiller & Construct Chilled Water Loop	\$ 7,175,000	Design
WIU	Western Illinois University	Upgrade Electrical Distribution System	\$ 3,500,000	Design
ISU	Illinois State University	Renovate Visual Arts Center	\$ 62,360,261	Design
ISU	Illinois State University	Renovate Mechanical and Plumbing Systems	\$ 3,013,000	Design
NIU	Northern Illinois University	Campus Boiler Replacements	\$ 16,000,000	Design
NIU	Northern Illinois University	Upgrade Steam Tunnel Distribution System	\$ 5,024,000	Design
NIU	Northern Illinois University	Construct Health Information and Technology Center	\$ 77,025,000	Design
NIU	Northern Illinois University	Structural Repairs & Exterior Building Improvements	\$ 3,753,600	Design
SIU	Southern Illinois University - Carbondale	Communication Building Renovation/Addition	\$ 98,222,936	Design
SIU	Southern Illinois University - Carbondale	Upgrade Fire Alarm System - 7 Buildings	\$ 2,383,731	Closeout
SIU	Southern Illinois University - Carbondale	Replace Campus Waterline	\$ 1,850,000	Design
SIU	Southern Illinois University - Edwardsville	Replace Digester Lid	\$ 547,567	Design
SIU	Southern Illinois University - Edwardsville	Improve Water Treatment Plant Sand Filter	\$ 817,165	Design
SIU	Southern Illinois University - Edwardsville	Replace Water Distribution Systems	\$ 2,500,000	Design
SIU	Southern Illinois University - Edwardsville	Renovate Greenhouse and Construct Addition	\$ 2,550,856	Design
SIU	Southern Illinois University - Edwardsville	Construct a Health Sciences Building	\$ 105,370,000	Design
SIU	Southern Illinois University - Edwardsville	Repair Stone Facia	\$ 712,100	Design
SIU	Southern Illinois University - Edwardsville	Abate Asbestos (067)	\$ 4,160,283	Closeout
UOFI	University of Illinois - Urbana/Champaign	Masonry Reconstruction	\$ 3,266,300	Design

UOFI	University of Illinois - Urbana/Champaign	Replace Roofing System and Repair Masonry	\$ 2,500,000	Design
UOFI	University of Illinois - Urbana/Champaign	Renovate Altgeld Hall/Demolish Illini Hall & Construct New Facility	\$ 192,000,000	Design
UOFI	University of Illinois - Urbana/Champaign	Life Safety Upgrades	\$ 3,243,000	Design
UOFI	University of Illinois - Chicago	Upgrade Campus Infrastructure & Renovating Campus Bldg	\$ 31,586,332	Closeout
UOFI	University of Illinois - Chicago	Exterior Repairs/Window Replacement - College of Med and Clinic Sciences	\$ 4,909,012	Construction
UOFI	University of Illinois - Chicago	Repair Exterior - Science and Engineering South Buildings	\$ 2,750,000	Design
UOFI	University of Illinois - Chicago	Construct A Computer Design Research and Learning Center	\$ 117,800,000	Construction
UOFI	University of Illinois - Chicago	Innovation Center Expansion	\$ 10,000,000	Design
UOFI	University of Illinois - Chicago	Repair Facade	\$ 12,640,696	Design
UOFI	University of Illinois - Springfield	Construct a Library Learning Student Success Center	\$ 35,000,000	Design
UOFI	University of Illinois - Springfield	Replace Roofing System	\$ 1,000,000	Design

58 University Projects

\$ 1,246,178,192

2 IMSA Projects

\$ 10,164,509

Illinois Community College Projects Underway				
ICCB	Southwestern Illinois Community College - Belleville	Replace Building Automation System	\$ 3,200,000	Design
ICCB	Southwestern Illinois Community College - Belleville	Replace Flooring	\$ 409,400	Design
ICCB	Black Hawk Community College - Moline	Replace Roof - Building 1	\$ 1,034,682	Construction
ICCB	Black Hawk Community College - Moline	Replace Roofing System - Building 3	\$ 2,259,939	Construction
ICCB	Blackhawk Community College - Kewanee,	Replace East Campus Roofing System	\$ 1,874,500	Design
ICCB	Truman City College - Chicago	Replace Piping and Storm Sewer Pumps	\$ 1,700,000	Design
ICCB	Kennedy-King College - Chicago, Cook County	Upgrade Campus Building Automation System	\$ 825,000	Construction
ICCB	Kennedy-King College - Chicago, Cook County	Replace Fire Alarm System	\$ 1,610,000	Design
ICCB	Harold Washington Community College - Chicago	Replace Roof	\$ 1,520,000	Construction
ICCB	Harold Washington Community College - Chicago	Restore Exterior	\$ 2,325,000	Construction
ICCB	Malcolm X College - Chicago	Replace Elevators	\$ 18,261,808	Design

ICCB	Olive-Harvey Community College - Chicago	Olive-Harvey College new building	\$ 55,341,342	Closeout
ICCB	Olive-Harvey Community College - Chicago	Upgrade Laboratories	\$ 835,500	Design
ICCB	Richard J. Daley College - Cook County	Reglaze Curtain Wall	\$ 5,535,000	Construction
ICCB	Wilbur Wright City College - Chicago	Replace Flooring	\$ 1,350,000	Construction
ICCB	Danville Area Community College	Remodel Clock Tower Center and Ornamental Horticulture	\$ 3,021,067	Design
ICCB	Richland Community College - Decatur	Replace Roofing System	\$ 859,653	Construction
ICCB	Richland Community College - Decatur	Renovate Shilling Community Education Center and Bistro	\$ 748,650	Design
ICCB	College of DuPage - Glen Ellyn	Repair Roads and Concrete	\$ 574,360	Construction
ICCB	College of DuPage - Glen Ellyn	Renovate Mechanical Systems	\$ 476,025	Design
ICCB	College of DuPage - Glen Ellyn	Improve Grounds and Retention Pond	\$ 4,336,400	Design
ICCB	College of DuPage - Glen Ellyn	Replace Skylights	\$ 1,342,625	Design
ICCB	Elgin Community College	Replace Chiller	\$ 2,006,500	Construction
ICCB	Elgin Community College	Replace Exterior Doors & Upgrade Security	\$ 350,000	Construction
ICCB	Southwestern Illinois College - Sam Wolf Granite City Campus	Renovate Exterior	\$ 636,000	Design
ICCB	William Rainey Harper College - Palatine	Repair Utility Tunnel Infrastructure	\$ 543,300	Design
ICCB	William Rainey Harper College - Palatine	Construct New Campus Facility	\$ 87,370,000	Design
ICCB	William Rainey Harper College - Palatine	Replace HVAC Systems	\$ 1,725,902	Design
ICCB	Highland Community College - Freeport	Replace Duct Heaters - Liberal Arts Building	\$ 150,440	Closeout
ICCB	Highland Community College - Freeport	Replace Carpet	\$ 575,000	Design
ICCB	Heartland Community College	Resurface Parking Lots	\$ 225,000	Closeout
ICCB	Heartland Community College	Repair Parking Lots, Roads and Sidewalks	\$ 1,000,000	Construction
ICCB	Illinois Central College - East Peoria	Construct Sustainability Education Center	\$ 13,600,000	Construction
ICCB	Illinois Central College - East Peoria	Replace Architectural Panels	\$ 743,125	Construction
ICCB	Illinois Central College - East Peoria	Repair Bridge	\$ 266,738	Construction
ICCB	Illinois Central College - East Peoria	Renovate Courtyard and ADA Improvements	\$ 1,157,188	Design
ICCB	Illinois Eastern Community Colleges - Olney Central College	Construct Applied Technology Center	\$ 3,076,400	Design
ICCB	Illinois Eastern Community Colleges - Wabash Valley College - Mt.	Repair Roof	\$ 368,200	Construction
ICCB	Illinois Eastern Community Colleges - Wabash Valley College - Mt.	Upgrade the Electric Service	\$ 300,000	Design

ICCB	Illinois Valley Community College - Oglesby	Replace Roads and Parking Lots	\$ 955,400	Closeout
ICCB	Illinois Valley Community College - Oglesby	Upgrade Building Exteriors	\$ 2,156,250	Design
ICCB	Joliet Junior College	Upgrade Elevators	\$ 1,335,783	Construction
ICCB	Joliet Junior College	Replace Air Handlers	\$ 5,750,000	Design
ICCB	Kankakee Community College	Replace North Patio	\$ 562,627	Design
ICCB	Kaskaskia Community College - Centralia	Replace Waterline	\$ 1,000,000	Design
ICCB	Kaskaskia Community College - Centralia	Replace Parking Lot	\$ 2,685,250	Design
ICCB	Kishwaukee College - Malta	Repair Work and Accessibility Improvements	\$ 367,720	Construction
ICCB	Kishwaukee College - Malta	Remediate Stormwater Drainage	\$ 557,750	Design
ICCB	College of Lake County - Grayslake	Construct Student Services/Adult Education Center Waukegan Campus	\$ 47,902,600	Construction
ICCB	College of Lake County - Grayslake	New Science Addition and Renovations	\$ 31,411,405	Closeout
ICCB	College of Lake County - Grayslake	Replace Roofing System	\$ 2,160,000	Construction
ICCB	College of Lake County - Grayslake	Replace Parking Lot	\$ 1,150,000	Design
ICCB	Lake Land College - Mattoon	Renovate Neal Hall	\$ 5,000,000	Design
ICCB	Lewis and Clark Community College - Godfrey	Repair Structure and Foundation	\$ 463,995	Design
ICCB	Lewis and Clark Community College - Godfrey	Replace Fan Coil Units	\$ 200,000	Design
ICCB	Lewis and Clark Community College - Godfrey	Replace Fire Alarm System	\$ 391,000	Design
ICCB	Lincoln Land Community College - Springfield	Install Generators	\$ 800,000	Design
ICCB	Lincoln Land Community College - Springfield	Renovate and Expand Student Services	\$ 6,325,000	Design
ICCB	Lincoln Land Community College - Springfield	Upgrade Exterior Doors	\$ 575,000	Design
ICCB	John A. Logan Community College - Carterville	Replace Elevator	\$ 339,500	Design
ICCB	John A. Logan Community College - Carterville	Construct Pedestrian Walkway, Improve Drainage and Relocate Bell Tower	\$ 1,020,000	Design
ICCB	John A. Logan Community College - Carterville	Expand West Lobby	\$ 5,033,333	Design
ICCB	McHenry County College - Crystal Lake	Replace Access Road and Improve Loading Dock	\$ 621,316	Construction
ICCB	McHenry County College - Crystal Lake	Construct Career, Technical and Manufacturing Center	\$ 23,150,200	Design
ICCB	McHenry County College - Crystal Lake	Replace Road	\$ 1,437,500	Design

ICCB	Moraine Valley Community College - Palos Hills	Replace Boilers	\$ 762,819	Construction
ICCB	Moraine Valley Community College - Palos Hills	Replace Parking Lots	\$ 1,220,000	Construction
ICCB	Moraine Valley Community College - Palos Hills	Replacement of Fire Doors	\$ 1,035,000	Design
ICCB	Morton Community College - Cicero	Renovate Building E	\$ 1,503,825	Construction
ICCB	Morton Community College - Cicero	Replace Parking Lot, Roadways and Walkway	\$ 6,747,300	Design
ICCB	Morton Community College - Cicero	Construct Addition to Maintenance Building	\$ 993,930	Design
ICCB	Oakton Community College - DesPlaines	Replace Sanitary Force Main	\$ 900,000	Design
ICCB	Oakton Community College - Skokie	Replace Exterior Wall Systems	\$ 3,500,000	Design
ICCB	Parkland College - Champaign	Reconstruct Courtyard	\$ 1,700,000	Construction
ICCB	Parkland College - Champaign	Replace Doors and Upgrade ADA	\$ 1,150,000	Design
ICCB	Prairie State College - Chicago Heights	Various Capital Improvements	\$ 6,808,880	Closeout
ICCB	Prairie State College - Chicago Heights	Various Capital Improvements		Closeout
ICCB	Prairie State College - Chicago Heights	Replace Mechanical Systems	\$ 5,320,000	Design
ICCB	Prairie State College - Chicago Heights	Replace Fire Alarm and Mass Notification System	\$ 3,277,500	Design
ICCB	Rend Lake Community College - Ina	Replace Fire Doors and Air Handler Units	\$ 307,996	Construction
ICCB	Rend Lake Community College - Ina	Replace Hot and Cold Water Loops	\$ 339,000	Construction
ICCB	Rend Lake Community College - Ina	Construct Allied Health	\$ 7,407,100	Design
ICCB	Rock Valley College - Rockford	Repair Parking Lot	\$ 595,000	Closeout
ICCB	Rock Valley College - Rockford	Repair Stairway and Sidewalk	\$ 620,000	Construction
ICCB	Rock Valley College - Rockford	Repair Parking Lots	\$ 345,000	Design
ICCB	Carl Sandburg Community College - Galesburg	Resurface Pavement	\$ 563,600	Design
ICCB	Sauk Valley Community College - Dixon	Replace Generator	\$ 500,000	Design
ICCB	Sauk Valley Community College - Dixon	Replace Air Handlers, Condensate Pumps, and Renovate Cooling Tower	\$ 2,645,000	Design
ICCB	Shawnee Community College - Ullin	Update HVAC System	\$ 123,720	Design
ICCB	Shawnee Community College - Ullin	Replace Gymnasium Floor and Bleachers/Renovate for ADA Compliance	\$ 500,000	Design
ICCB	Shawnee Community College - Ullin	Upgrade Mechanical Systems	\$ 2,570,275	Design
ICCB	Southeastern Illinois College - Harrisburg	Replace Boilers, Pumps and Condensing Units	\$ 937,800	Design
ICCB	Spoon River College Attendance Center - Macomb	Replace Parking Lot	\$ 1,400,000	Construction

ICCB	Spoon River College Attendance Center - Macomb	Renovate CTE/Nursing Building	\$ 8,103,600	Design
ICCB	South Suburban College - South Holland	Construct Allied Health Addition	\$ 69,722,973	Design
ICCB	South Suburban College - South Holland	Replace Flooring	\$ 605,000	Closeout
ICCB	Triton College - River Grove	Upgrade Mechanical Systems	\$ 335,000	Construction
ICCB	Triton College - River Grove	Replace Windows	\$ 2,255,467	Design
ICCB	Waubonsee Community College - Sugar Grove	Renovate Elevators	\$ 600,000	Design
ICCB	Waubonsee Community College - Sugar Grove	Upgrade HVAC - Erickson Hall Gymnasium	\$ 500,000	Design

99 CC Projects

\$ 502,782,159