



EASTERN ILLINOIS UNIVERSITY™

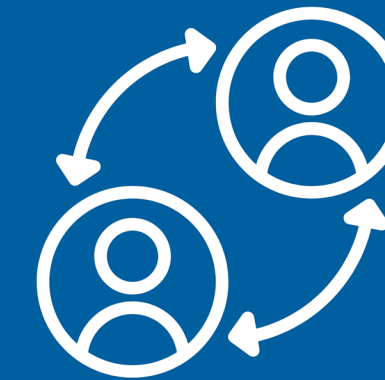


PLAN 2028

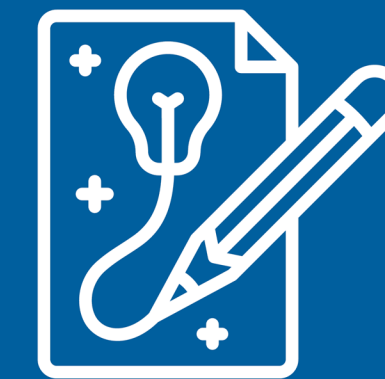
**EASTERN ILLINOIS UNIVERSITY'S
2023-2028 STRATEGIC PLAN**



ACHIEVE:
ACHIEVE SUCCESS
FOR ALL LEARNERS



ENGAGE:
ENGAGE THE
COMMUNITY,
REGION, STATE
& WORLD



CREATE:
CREATE A
21ST CENTURY
CAMPUS &
CULTURE



RESOURCE:
ENCOURAGE
INNOVATION,
DIVERSIFY
REVENUE & GROW
ENROLLMENTS

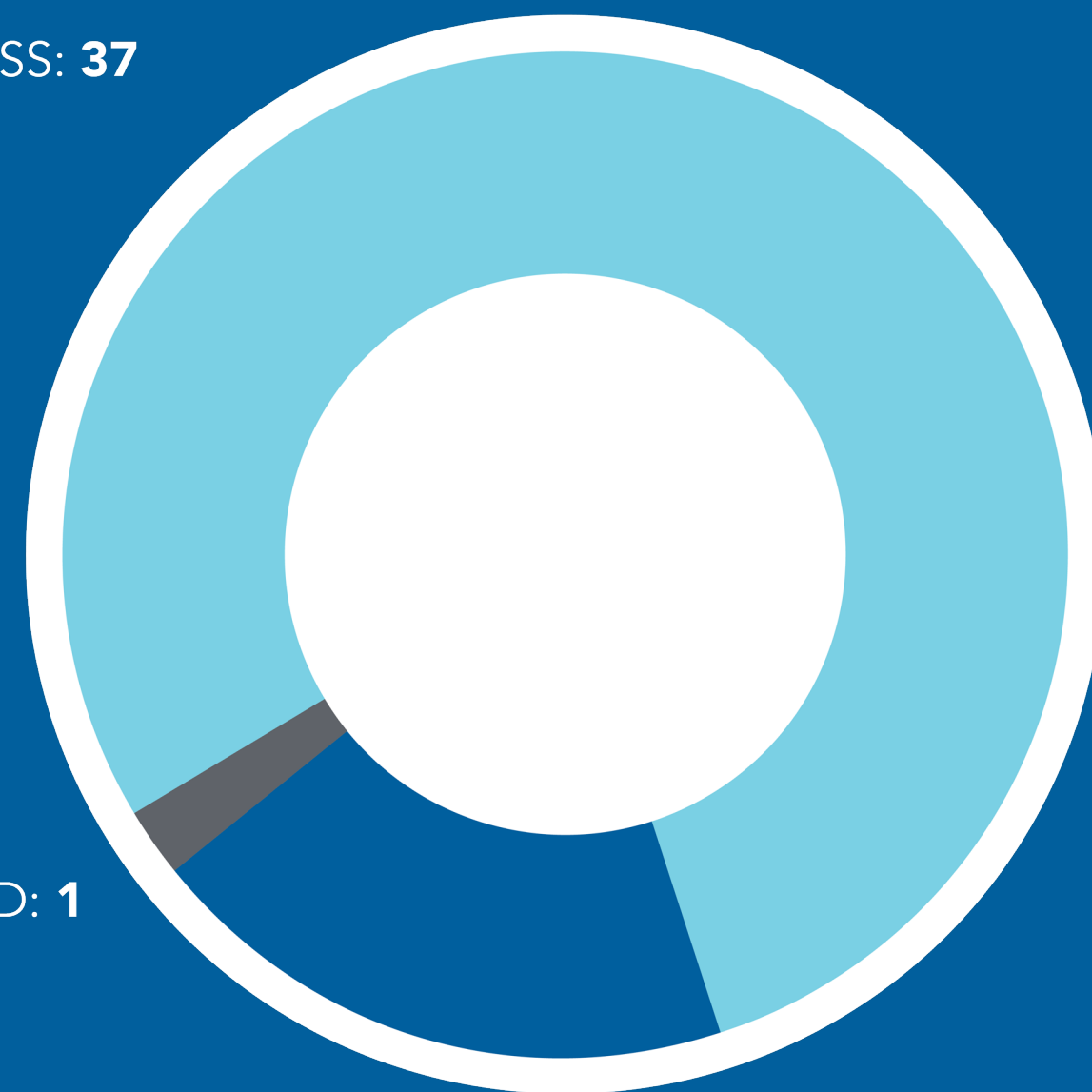
HOW ARE WE DOING?

[GO.EIU.EDU/PLAN2028TASKS](https://go.eiu.edu/PLAN2028TASKS)

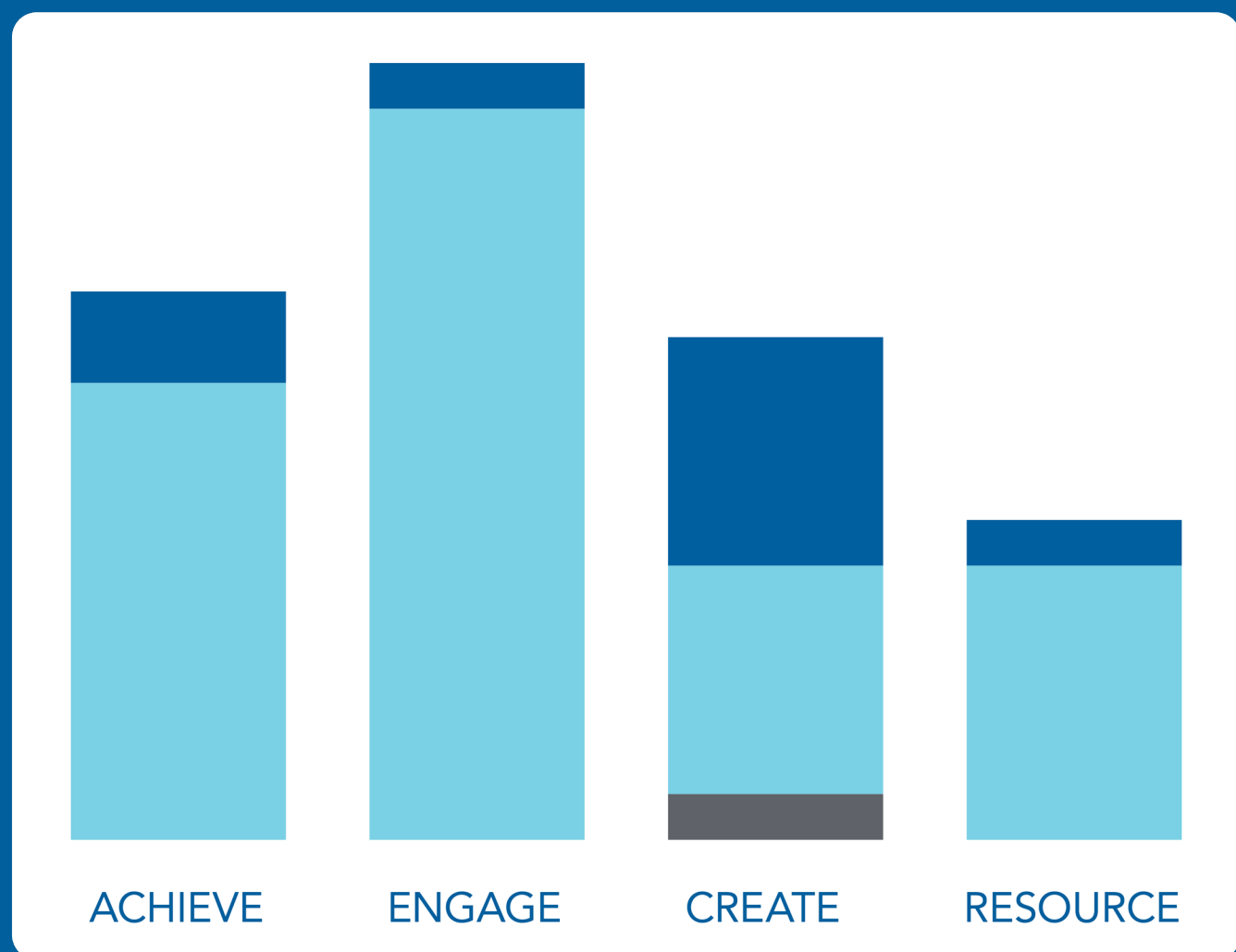
IN PROGRESS: 37

NOT STARTED: 1

COMPLETED: 9



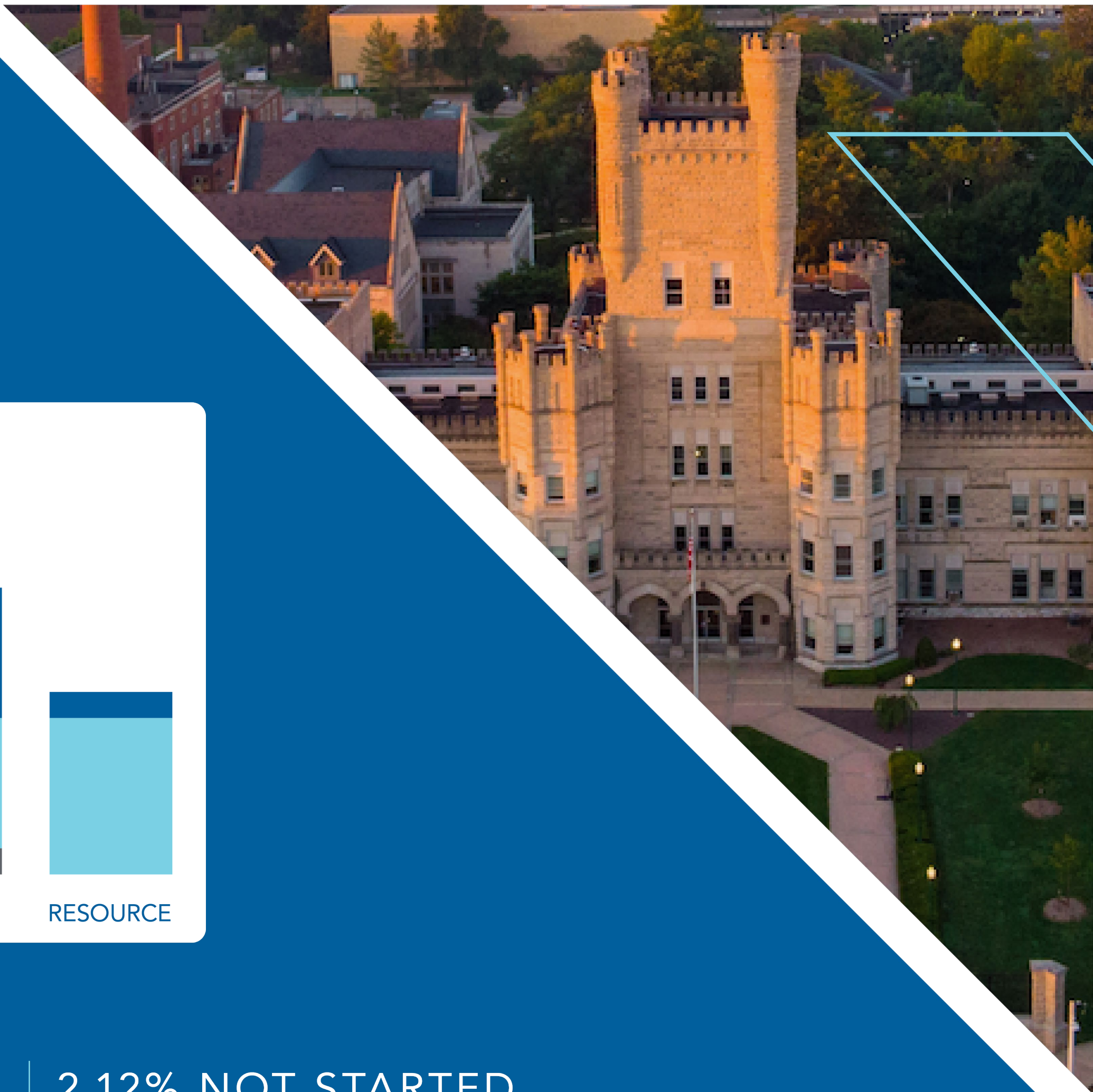
ACTIVITY THEMES



78.72% IN PROGRESS

19.14% COMPLETED

2.12% NOT STARTED



THEME ONE: ACHIEVE

ACHIEVE SUCCESS FOR ALL LEARNERS



DWF INITIATIVE

FALL '24



CHEMISTRY 1

12%

STUDENT SUCCESS
IMPROVEMENT
COMPARED TO
3-YEAR DWF RATE

3 DEPARTMENTS
EXCEEDED

7.5%

INCREASE OVER
RATES ACROSS ALL
DEPARTMENT'S
SECTIONS

ACROSS ALL
SECTIONS

60%

OBSERVED DWF
RATES BELOW
PRIOR YEARS

OF THOSE
SECTIONS

74.3%

EXCEEDED THE GOAL

DWF INITIATIVE

SPRING '25



37.1%

**7.5 POINTS BELOW
3-YEAR AVERAGE**

5.34

**POINT AVERAGE
REDUCITON**

22.3%

**OVERALL DWF
PERCENTAGE
ACROSS ALL
COURCES**

72.2%

**SECTIONS WITH
REDUCED DWF
GREATER THAN
7.5 POINTS**

