

Applegate's Update

Moving Forward

As we come to the middle of the tenth month of the fiscal year without a state budget the crisis deepens. My colleagues and I at the state higher education agencies testified before a Senate Subcommittee this week on the increasingly dire consequences for our low-income MAP college students. IBHE is meeting with leaders to try to find a path to compromise. Hopefully something will happen soon to help our students, our colleges on the brink, and to restore the public trust in our higher education system.

Meanwhile though, our hard working team stays committed to a focus on the future. [The Higher Education Commission on the Future of the Workforce](#) met this week to review policy changes needed to better align college credential production and workforce needs. There was good news to share. The IBHE in partnership with the Council on Adult and Experiential Learning (CAEL) announced that USA Funds, a nonprofit organization that promotes student success in college and career, has awarded a significant grant to support implementation of the Commission's recommendations in economic development regions around Illinois. The Illinois State Board of Education (ISBE) also has received an initial planning grant to improve pathways out of high school to college and careers.

In other good news, IBHE is grateful to the Governor for the appointment of Tom Cross as our new Board Chair. See [IBHE Bulletin](#) (March 4) for the appointment news. Tom brings invaluable experience as a legislative leader. His commitment to higher education is long standing. Most recently he has been actively involved in innovative college programs linking higher education and employers. Tom previously participated in a panel for IBHE focused on business/higher education engagement. Tom spent a full day this week in our offices meeting with staff. We are excited for his leadership.

[President Jack Thomas](#) of Western Illinois University and **Kevin Huber**, the new chair of the Illinois Student Assistance Commission have also joined our Board. They both bring a wealth of experience that will help us advance our strategic priorities to reduce college completion gaps, make college more affordable, and increase college opportunities for adult learners.

Finally, the Lumina Foundation, the preeminent foundation in the U.S. focused on college completion, released its annual report [A Stronger Nation 2016](#) with more good news for [Illinois](#). Illinois showed continued growth in the percentage of our workforce with a two- or four-year college degree (though we need to accelerate that progress if we hope to reach our goal of 60 percent of the workforce with a quality college credential by 2025). In addition, for the first time Lumina included postsecondary certificates that produce significant labor market outcomes. This analysis identified six percent of Illinois' workforce with those certificates. That was greater than the national average and puts our college attainment levels at 50 percent making the 60 percent goal seem all the more attainable. We have always wanted to count these sub-degree, workforce-valuable certificates and credentials and promote them for our students. Now we are beginning to have the data to allow us to do that. Of course, these should be stackable and part of a pathway to higher level credentials and degrees, not educational cul de sacs that trap some students in lower level jobs. Nevertheless, they can be opportunities that improve the lives of many

and propel them toward the education they need to join the middle class.

Of course the data in the Lumina report and in the reports I have shared previously on our higher education system showing its strong comparative performance nationally are all based on data that preceded our current budget debacle. It will be tragic if the current crisis undercuts the progress Illinois is demonstrating. See [IBHE Bulletin](#) (March 18).

Congratulations to all those working hard to support our progress: may their example inspire a budget that allows us to keep moving forward.

60 x 2025

A new Lumina Foundation report establishes that nearly half of the working age adults in Illinois have a high quality postsecondary credential or degree useful for the workforce needs of the state. [Stronger Nation 2016](#) reports that the overall **postsecondary attainment rate reported for Illinois is 49.6%**. This is nearly 10% higher than the national average and 9% higher than the other Midwestern states.

The report also found that **6% of the working age population in Illinois** had a high quality credential (but no further degree/credential). This, too, was higher than the national average (just under 5%) and the Midwestern state average (4.5%)

Illinois is committed to the **goal of 60% of working age Illinoisans possessing a postsecondary credential or degree by 2025**. By then at least two-thirds of workforce demands will require employees with higher education. However, in the past some individuals with credentials but no degree were not counted toward the 60 by 2025 goal. This report aimed to establish tools states could use to include credential holders. IBHE and the Commission on the Future of the Workforce is working to establish a postsecondary certificate framework for Illinois.

Representatives of **Eastern Illinois University (EIU)** and two regional community college districts [formally signed agreements](#) this week that will allow associate degree-seeking nursing students to simultaneously begin their baccalaureate education. An innovative dual-track transfer program will allow ADN students from **Danville Area Community College (DACC)** and **Illinois Eastern Community Colleges (IECC)** to be admitted to Eastern's RN to B.S. in Nursing Program after completing their first year at their respective community college.

(Illinois Eastern Community Colleges is a multi-college district headquartered in Olney, and includes Frontier Community College, Fairfield; Olney Central College, Olney; Lincoln Trail College, Robinson; and Wabash Valley College, Mt. Carmel.)

Once these students successfully complete their ADN program, have their RN license and proof of liability insurance, they are granted full admission to EIU. **EIU President David Glassman** expressed his pleasure with the signed agreements, saying they provide for a "seamless transition to BSN education."



(Seated, l to r) EIU President David Glassman and DACC President Alice Marie Jacobs; (Standing, l to r) EIU College of Sciences Interim Dean Doug Klarup, EIU RN to BS in Nursing Program Director Renee Kidd-Marshall, and EIU Provost and Vice President for Academic Affairs Blair Lord



(Seated, l to r) EIU President David Glassman and Olney Central College President Rodney Ranes; (Standing, l to r) EIU College of Sciences Interim Dean Doug Klarup, EIU RN to BS in Nursing Program Director Renee Kidd-Marshall, EIU Provost and Vice President for Academic Affairs Blair Lord, and IECC CEO Terry Bruce

Increasing Affordability

ISAC Offers Free Tools and Resources for Financial Literacy Month

April is Financial Literacy Month and April 23-30 is Money Smart Week – so ISAC has aggregated a number of free tools and resources available on its [Student Portal](#) that can help students and families get money-smart.

- Students can learn about how to **take control of their money**—from credit cards to student loans and more, by taking advantage of everything ISAC's partner, SALT™ Money, has to offer.
- Students can play the **FinAid game** to find out how much they know about financial aid, and use ISAC's online tool to **compare financial aid award letters**.
- The Portal also makes it easy for students to **connect with their local ISACorps member, find a financial aid workshop** in their area, or sign up for ISAC College Q&A, a free tool that allows them to **text financial aid and college questions directly to a counselor**.

Be sure to visit the [Financial Literacy page on the ISAC Student Portal!](#)

And if you know a student looking for a **summer job or internship**, visit the new [Internship/Summer Job Board](#) on the **Illinois Student Assistance Commission (ISAC) Student Portal** – there's over 3000 positions listed throughout Illinois and we update them daily.

The **Illinois Latino Council on Higher Education (ILACHE)** is pleased to offer two \$1,000 scholarships to Latino/a students in Illinois who exhibit outstanding commitment to learning, community service, and leadership. ILACHE is an action oriented, independent advocacy group for Latinos in higher education in the areas of access and equity as it relates to employment, college admission representation, and educational legislation in the State of Illinois. Eligible applicants must be Illinois residents who are attending an accredited college or university located in the state of Illinois. Graduating high school seniors can apply but must be registered as a full-time student at an Illinois college/university in the fall 2016 semester. [Apply online](#) by **May 11, 2016**.

People in the News



Governor Bruce Rauner has appointed **Western Illinois University President Jack Thomas** to the **IBHE Board**.

[According to Gov. Rauner](#), Thomas will bring a university administrator's perspective to the board.

"I am honored to be appointed, and to serve, as a member at large to the Illinois Board of Higher Education. I look forward to addressing the issues facing higher education in the state of Illinois. As a representative on the board, I will help provide a voice for downstate Illinois and all of higher education, particularly in these challenging economic times," President Thomas said. "It is exciting to be a part of the higher education community as we work to prepare students for success in a global society. I welcome the opportunity to work meaningfully with members of IBHE," Thomas added.



Kevin B. Huber has been appointed Chair of the **Illinois Student Assistance Commission**. Mr. Huber has served on the Commission since 2012, and is a member of the Audit Committee. He is the retired Executive Director and Chief Investment Officer of the **Chicago Teachers' Pension and Retirement Fund**. As ISAC Chair Mr. Huber also serves as an *ex officio* member of **IBHE**.

Upcoming Events

Statehouse Rally to Save Higher Education

The **Illinois Coalition to Invest in Higher Education** cordially invites you to join them for a massive rally Wednesday, April 20, to get the attention of the legislators and governor for a funding solution for Illinois colleges and universities.



Participants will arrive at noon. The rally starts at 12:30 p.m. at the **Illinois Education Association**, 100 E. Edwards, Springfield. After the rally the Coalition and participants will go to the Capitol to speak with legislators. There's power in numbers, so invite everyone you can to join us: students and their families; alumni; faculty and staff; businesses and local chambers of commerce; and legislators.

The **2016 ILACHE Conference Committee** has planned an opportunity to learn and network with colleagues and friends at **Northern Illinois University**. Three Latino/a professional leaders in Higher Education will set the tone for this year's conference theme: *Reshaping Latino Access to Higher Education: Realities, Challenges, and Opportunities*. **[Registration for attendees and presenters is now open!](#)**

IBHE Student Art Exhibition

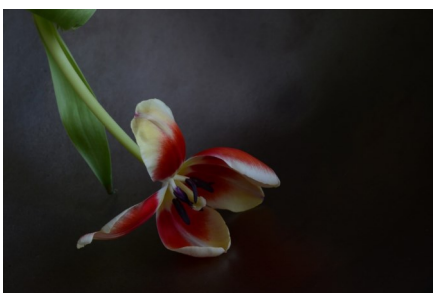
Denise Steinlauf, McHenry County College



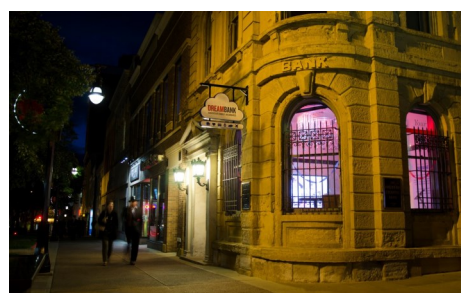
Twenty-four Seven



Night Solitude



Tulip Study 2



Dreambank

Student Laureates

In each issue of *The Bulletin*, we will feature student laureates recognized by the Lincoln Academy of Illinois.

Judson University



Ethan Adams
Springfield, IL

*Major: Marketing/
Management/ Communications*

Knox College



Sophia Croll
Cambridge, MA

Majors: History and German

Lake Forest College



Benjamin Labaschin
Northbrook, IL

*Majors: Economics and
Environmental Studies*

In Case You Missed It

A few articles and updates worth the read:

[IPA Connect](#): Illinois higher education is true to its mission, March 18, 2016

[Daily Herald](#): College officials warn of more layoffs if budget fight continues, April 6, 2016

[Chicago Tribune](#): Community college scholarships in danger in state budget fight, April 7, 2016

[New York Times](#): Chicago State, a lifeline for poor blacks, is under threat itself, April 9, 2016

[News-Gazette](#): IBHE head: Fewer campuses will bear MAP cost, April 12, 2016

[Western Courier](#): More layoffs hit Western, April 13, 2016

[Illinois Issues/WUIS Public Radio](#): Budget impasse blurs future for the class of 2016, April 14, 2016

[Reboot Illinois](#): Confusion for students, counselors as MAP Grants in limbo for second straight year, April 14, 2016

IBHE

1 North Old State Capitol Plaza • Suite 333 • Springfield, Illinois 62701
217-782-2551 TTY 888-261-2881