

## Applegate's Update

### Steps in the Right Direction

Late last week, state leaders came together to provide a \$600 million dollar relief package to Illinois higher education. Governor Rauner signed [Public Act 99-0502](#) on Monday, April 25. The next day, IBHE Chairman Tom Cross sent a letter to the Governor and Members of the General Assembly, stating:

*"On behalf of the Board of Higher Education, I want to express appreciation for the bipartisan cooperation and leadership that helped rescue Illinois higher education from the immediate financial crisis. SB 2059, now law, provides financial support to all public universities and community colleges to stay open, and to students eligible for Monetary Award Program (MAP) grants to focus on completion of the spring semester and graduation ceremonies for the Class of 2016.*

*We are grateful that you listened to the many students and their families, faculty, staff, and citizens who have demonstrated how much Illinois' higher education system is valued. We want to publicly thank Illinois State University's president, Dr. Larry Dietz, and Secretary of Education, Dr. Beth Purvis, for their untiring efforts to bring a compromise to the General Assembly that assisted those campuses and students most in need.*

*The Board offers our assistance and commitment to work with our elected leaders as you deliberate on final spending plans for fiscal years 2016 and 2017 that do well by our state, college students, and citizens."*

The Governor has appointed John Bambenek as the newest member of the IBHE Board (See *People in the News* for more information). We are rapidly approaching full Board membership to advance IBHE's priorities of improving affordability, reducing college success gaps for underrepresented students, and increasing college opportunity for adult learners.

The IBHE led [Commission on the Future of the Workforce](#) will meet on Monday, May 2, to review and adopt its final recommendations to improve alignment between college credential production and workforce needs in each region of Illinois. Now that IBHE, in partnership with the Council on Adult and Experiential Learning (CAEL), has received substantial grant funding to support the Commission's work, we are anxious to begin partnering with our state agency colleagues and regional leaders to launch this effort. IBHE is deeply grateful to those who have served on the Commission over the past few months and led us to this point. We are also grateful to the various state agencies, employers, and nonprofit leaders who have supported the Commission. As we have said from the outset, the Commission's final recommendations will mark "the end of the beginning." The Commission's review and study of how to match job demands with higher educational programs sets the foundation for the implementation strategies to increase the system's capacity to produce college credentials for traditional and adult learners that best serve the needs of each region of Illinois: building their economies and quality of life.

We also continue to convene the [Military Prior Learning Assessment Task Force](#) to

develop strategies to serve the needs of veterans seeking a college credential. The meetings have clearly shown the depth of expertise the Task Force members bring to this work. There is no doubt this work will allow our colleges to accelerate veterans' progress to valuable credentials and honor their service to our country.

I had the opportunity to speak to the [Gateways to Opportunity](#) meeting in Bloomington on April 14. The IBHE has been heavily involved with colleges and universities across the state supporting development of high quality early childhood education preparation programs. Research has made clear that the benefits of early childhood education are dependent on a strong teaching workforce. IBHE Early Childhood Educator Preparation Program Innovation Grants have helped these programs attract quality candidates into innovative programs that provide stackable credentials on the path to a teaching position. It is a model for work with adult learners generally.

The month of May in Springfield is dominated by the work of the [Illinois General Assembly](#) on legislative initiatives and budget deliberations. During it all, we encourage them and all engaged in Illinois higher education to continue to do all we can to advance the opportunities for more Illinois citizens to find the path to a quality college credential and move the state toward its goal to have 60 percent of its workforce with such a credential by 2025.

## 60 x 2025

[Public Act 99-0502](#) (SB 2059) signed into law by **Governor Bruce Rauner** earlier this week provides for some much needed relief for higher education for Fiscal Year 2016. Specifically, the measure appropriates \$600 million to **public universities**, [community colleges](#), the **Monetary Award Program (MAP)**, and the **Illinois Mathematics and Science Academy (IMSA)**. MAP receives funding for payment of claims for the first term from 2015 fall semester. These appropriations are payable from the **Education Assistance Fund (EAF)**, where balances are anticipated to cover the sufficient amount appropriated accordingly to the **Governor's Office on Management and Budget**.

**SB 2059 Breakdown**

Institution/Agency	Funding
CSU	\$20,107,000
EIU	\$12,456,000
GSU	\$6,974,000
ISU	\$20,934,000
NEIU	\$10,695,000
NIU	\$26,403,000
SIU System	\$57,482,000
U of I System	\$167,645,000
U of I Hospital	\$11,104,000
U of I School of Labor & Employment	\$1,344,000
WIU	\$14,911,000
ICCB	\$74,142,000
IMSA	\$6,000,000
ISAC/MAP	\$169,798,000
Total	\$600,000,000

*Source: IBHE staff*

## Reducing Gaps for Underserved Students

On April 19, the **Pell Institute for the Study of Opportunity in Higher Education** held an event at the National Press Club to announce the release of the [Indicators of Higher Education Equity in the United State – 2016 Historical Trend Report](#). The report, by the Pell Institute and the **University of Pennsylvania**'s Alliance for Higher Education and Democracy examines trends in postsecondary enrollment in the U.S. by family income, race/ethnicity, and family socioeconomic status. It uses data from the **Current Population Survey (CPS)**, the **National Center for Education Statistics (NCES)** Beginning Postsecondary Study, the NCES high school longitudinal studies, and other public sources. As a member of the Advisory Committee of the PELL Institute, **Dr. Jim Applegate** attended the release of this report and was briefed on its implications for underrepresented student groups in Illinois and nationally.

The report shows that while bachelor's degree attainment rates have increased for all family income quartiles, the distribution of bachelor's degree attainment between family income levels has remained relatively constant since 1970. The top two family income quartiles together accounted for 72 percent of the total bachelor's degrees attained in 1970 and 77 percent of the bachelor's degrees in 2014. It indicates that students from higher and lower income quartiles enroll in different types of colleges and universities with varying rates of college success.

## People in the News

**Governor Bruce Rauner** has appointed [John Bambenek](#) to the Illinois Board of Higher Education. Bambenek's experiences as a lecturer at the University of Illinois and as a small business owner will bring a unique perspective to the board. Since 2013, Bambenek has taught classes in cybersecurity at the University of Illinois. He is also president of Bambenek Consulting, LTD, which conducts cybersecurity investigations and intelligence. He has provided professional education and conducted forensic examinations. Additionally, he is the manager of threat intelligence systems at Fidelius Cyber Security. Bambenek earned his bachelor's degree from the University of Illinois. He lives in Champaign.



The **Illinois Central College** Board of Trustees unanimously approved the selection of [Dr. Sheila Quirk-Bailey](#) to be the fifth president of the College. Dr. Quirk-Bailey's appointment requires the finalization of her contract by a vote of the Board, scheduled for their next meeting on May 19. "Serving as Illinois Central College's fifth president will be a great honor. ICC is an excellent institution, and I am humbled and excited by the opportunity to support its future successes. I am looking forward to



working with all of the outstanding people I met during the interview process and establishing relationships with our students, employees, partners and community stakeholders. I especially want to thank the search committee and the Board of Trustees for their confidence in me," Dr. Quirk-Bailey said. Dr. Quirk-Bailey holds a Doctorate of Management in Community College Policy and Administration from the University of Maryland University College; a Master of Arts in Communications from Northern Illinois University; and a Bachelor of Science in Speech Communication from Bradley University. Her current position is Chief of Staff/Vice President of Planning and Institutional Effectiveness at William Rainey Harper College in Palatine, Ill.

## Upcoming Events



Dear Colleagues:

The Illinois Education Research Council announces the call for proposals for its 14th annual *Focus on Illinois Education Research Symposium* September 29 & 30 in Bloomington, IL. We provide a unique forum for the discussion of educational issues of interest to the Illinois community for education policy makers, researchers, and practitioners from the state and beyond. The [call for proposals is here](#) and closes on **June 17, 2016**. Submit a proposal and come be a part of the conversation!

Please forward this information to interested colleagues and students.

Sincerely,

**Janet K. Holt, PhD**  
**Executive Director**  
**Professor of Educational Leadership**

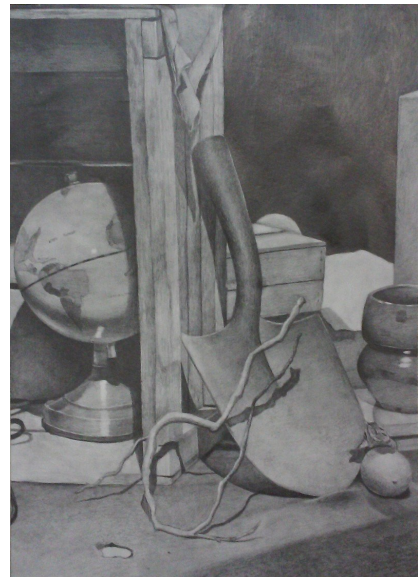
## IBHE Student Art Exhibition

**Madeline Pearson,  
Eastern Illinois University**



**Value  
Study**

**Prarthna Narita Sharma,  
South Suburban College**



**Untitled**



**David**



## Student Laureates

In each issue of *The Bulletin*, we will feature student laureates recognized by the Lincoln Academy of Illinois.

Lewis University



**Jessica L. Tennant**  
Romeoville, IL

*Major: Computer Graphic Design*

Lincoln College



**Cody Garretson**  
New Holland, IL

*Major: Jazz Studies*

Loyola University Chicago



**Ashley Rogers**  
Chicago, IL

*Major: Psychology*  
*Minor: Biology*

## In Case You Missed It

A few articles and updates worth the read:

[Chicago Tribune](#): As Chicago State ends semester early and some funds OK'd, uncertainty looms, April 26, 2016.

[Washington Post](#): Illinois gives universities \$600M in funding, but is it too little too late, April 25, 2016.

[Crain's Chicago Business](#): Rauner signs \$600 million emergency education aid bill, April 25, 2016.

# IBHE

1 North Old State Capitol Plaza • Suite 333 • Springfield, Illinois 62701  
217-782-2551 TTY 888-261-2881