

Applegate's Update

MAP for Illinois' Future

Illinois' Monetary Award Program (MAP) is one of largest exclusively need based college financial aid programs in the country. Given Illinois' demographics, much of the growth to attain the goal of 60 percent of Illinois workers holding a college credential by 2025 will need to come from low income dependent and independent students. Illinois' program is a national model in many ways. It was recently recognized as a national leader in its design to address the needs of independent adult students in a [Center for Postsecondary and Economic Success at CLASP study](#). Without dramatic increases in adult college completion Illinois cannot possibly reach its 60 X 2025 goal and meet workforce needs. In addition, MAP's steadfast commitment to need-based aid has brought it praise from every corner as a counter weight to the trend that has refocused many state aid programs on wealthier students.

The Illinois Student Assistance Commission (ISAC) that administers MAP just released the results of a [study](#) of college outcomes for MAP students that further documents the quality and value of the program. The data continue to show that MAP recipients graduate at about the same rate as other students at the same school, despite the additional challenges posed by their low income status. Of course for colleges with low overall graduation rates IBHE, ISAC, ICCB and all of our partners are working to implement reforms to raise those rates for everyone: redesigned developmental education programs that move more students quickly to credit bearing courses and degrees; guided pathways supported by better student data and advising to ensure students start strong and stay on the pathway and graduate without excess credits; and multiple math pathways better aligned with student needs.

Success gaps exist for MAP students between white students and students of color but on the whole they are smaller than for the student population as a whole. IBHE is working with ISAC and all of its higher education partners to reduce those gaps for everyone. We cannot reach our 60 X 2025 goal without improved outcomes for our underrepresented students. Still it is good news that the gaps are smaller for MAP students.

As for all students, preparation matters. Better prepared full-time students (measured in this study by ACT scores) were three times more likely to graduate from our four year colleges in six years. These results point to the importance of partnerships between higher education and P-12 schools to address equity issues of all sorts that negatively impact the preparation of low income students often concentrated in poorer schools. ISAC actively works in schools on this issue.

This week I attended the launch of a new tool that will support work in Chicago to build on improvement in high school graduation rates over the last decade that directly addresses college success for Chicago Public School students (CPS). The "To and Through" initiative clearly defines student success as completion of a college credential with high school graduation as a step on that path. The chances for college completion for CPS students to complete college have grown from eight to eighteen percent over the last several years. The goal of "To and Through" is to reach and surpass national averages on this metric. IBHE will be a partner in this work. I left that gathering of 200 Chicago leaders with optimism. ISAC's recent analysis provides

another reason for optimism. In part because of its work with the CPS FAFSA completion, program enrollment AND graduation numbers for MAP students coming out of CPS high schools has increased.

ISAC's most recent data show how important the MAP program is to Illinois' college completion goals, to the 128,000 students relying on MAP already in college, and to the hundreds of thousands of students going forward that will need MAP support to attend and complete college. It behooves all of us to support continued funding for the MAP program that will allow these students to fulfill their college dreams and set Illinois on a course to meet its talent needs for a 21st century economy.

60 x 2025

A new [webpage](#) on the **Illinois Board of Higher Education** (IBHE) website is dedicated to **Advanced Placement** exam credit policies at all twelve Illinois public universities. The page includes a brief overview of [Public Act 99-358](#), requiring public colleges and universities to give students credit for any exam where the high school student received a score of 3 or higher. Each university's listing includes links to all of the university's AP policies and subsequent score charts.

Increasing Affordability



The **Illinois Student Assistance Commission** (ISAC) is launching **College Changes Everything** (CCE) Month this October – combining the activities of **College Application Month** and **Financial Aid Awareness Month**. During CCE Month, ISAC will offer support for both college application activities and FAFSA completion. Learn more on how to participate and find resources at the [ISAC Website](#).

Reducing Gaps for Underserved Students

The [University of Illinois at Chicago](#) has received a two-year, \$300,000 grant from the [National Science Foundation](#) to enhance inclusion of underrepresented groups in the fields of science, technology, engineering and mathematics, or STEM.

The new NSF program, called **INCLUDES**, for Inclusion across the Nation of Communities of Learners of Underrepresented Discoverers in Engineering and Science, awarded its first \$14 million in grants to 37 pilot programs focused on STEM. UIC is the only recipient institution in Illinois.

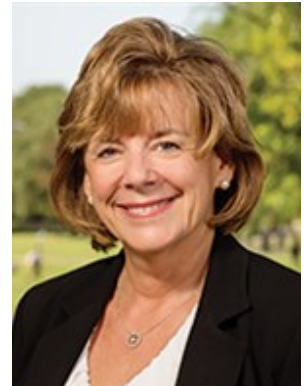
Kimberly Lawless, associate dean for research in the UIC College of Education, is the principal investigator on the grant. "I'm thrilled by this opportunity, because it creates a synergy between the mission of UIC and outreach to the community to develop new pathways in STEM fields for local community constituents," Lawless says. "My work has shown that these types of contexts not only boost student performance, but also increase interest in participating in future STEM-based learning opportunities and heightens interest in future science careers."

Lawless will focus on building alliances to enhance STEM teaching with a consortium of community-engaged partners, including university and kindergarten through 12th grade schools, community colleges, community organizations and cultural institutions, and businesses. Her goal is to "engage under-represented students in learning how and why STEM is relevant to their lives." Other UIC educators involved in the project are **Jeremiah Abiade**, assistant professor of mechanical and industrial engineering; **Aixa Alfonso**, associate professor in biological sciences; **Ludwig Carlos Nitsche**, associate dean for undergraduate affairs in the college of engineering and associate professor of chemical engineering; and **Donald Wink**, professor and director of undergraduate studies of chemistry and director of graduate studies for learning sciences.

Twenty-five \$2,000 scholarships for undergraduate college students of Latino descent will soon be granted by the **Illinois Legislative Latino Caucus Foundation**. Details about the scholarships and instructions for online applications may be found at www.illcf.org. The application deadline is October 2, 2016.

People in the News

Interim University of Illinois at Urbana-Champaign Chancellor Barbara J. Wilson has been [named executive vice president and vice president for academic affairs](#) of the three-university **U of I System**, **President Tim Killeen** has announced. Killeen said Wilson's appointment, will assume her new duties September 26, subject to Board of Trustees approval, fills a newly restructured role that establishes a clear second-in-command to the president, and adds responsibilities as senior operating officer to traditional duties as chief academic officer. In her new role, Wilson also will work closely with Killeen to advocate for the U of I System and elevate its national profile by building on connections with legislators, funding agencies and leaders in higher education, communities, and industry.



"Barb's leadership, passion and vision have been invaluable in steering the university through a turbulent year with its excellence intact," Killeen said. "I am delighted that she will now share her many talents to serve the entire U of I System, and elevate our standing as a global leader in education, innovation and service to the public good."

Wilson joined the Urbana-Champaign faculty in 2000 and became the Harry E. Preble Dean of the College of Liberal Arts and Sciences (LAS) in 2014. She retained her title as dean while serving as interim chancellor, but will leave the post when she takes her new position. **Executive Associate Dean Brian Ross** led LAS over the last year and will continue in that role during the transition. Before becoming dean, she had served since 2009 in the Office of the Provost. Her service there included two years as executive vice provost for faculty and academic affairs, with a leadership role in campus strategic and financial planning. A professor of communication who was a member of the faculty at the University of California at Santa Barbara for 12 years, Wilson is an elected fellow of the International Communication Association. A three-degree alumna of the University of Wisconsin-Madison, Wilson earned a bachelor's degree in journalism and her master's degree and Ph.D. in communication.



The **Joliet Junior College** Board of Trustees unanimously approved the appointment of [Dr. Judy Mitchell as the college's ninth president](#) at their Sept. 13 meeting.

Dr. Mitchell has served as JJC's interim president since March 21 of this year, following the resignation of **Dr. Debra Daniels**, who served as the college president for four years. Prior to accepting the role of interim president, Mitchell was the vice president of administrative services.

"I am extremely pleased to continue on in this role. As many know, I have been at the college for 20 years, dedicating much of my professional life to making JJC a better place for students, employees, and our community," Dr. Mitchell said. "I am honored and humbled to be chosen to lead the college into the future and I will give my all to ensure that the college is an innovative, supportive, and quality institution to meet the needs of our campus community."

The [John A. Logan College Board of Trustees](#) has appointed [Glenn Poshard](#) to fill a vacancy on the board. Poshard replaces **Bill Alstat** who died last month. Alstat was serving his first term on the board. Poshard, a former Congressman, and retired President of SIU, will hold the seat until the April election at which time he can choose whether or not to run for the remaining four years of Alstat's term. Poshard will be seated at the Board of Trustees meeting on Sept. 27.



Krista Winters was recognized at the September 16, 2016, ICCB board meeting for her service as president of the [Illinois Community College Faculty Association](#). Winters is a biology instructor at Spoon River College in Canton.

Upcoming Events

Continuing the Conversation | A Learning Community Focused on Student College and Career Readiness and Success
Our Subject: The Importance and Impact of Attendance



COLLEGE CHANGES EVERYTHING®

November 3, 2016 | 8:30 am – 12 pm
ISAC Deerfield Office

The **College Changes Everything**...Continuing the Conversation event will examine the importance and impact of students' attendance during their Pre-K-12 school years. Being at school and on time is a foundational essential/soft skill that students need to have in order to help them be successful for life after high school, whether that's pursuing a postsecondary education or starting on a career pathway. Registration for this event is free, but space is limited, so reserve your spot now online via [Eventbrite](#).

This half-day workshop will provide participants the opportunity to engage with other participants in small and larger group discussions on the topic following a systematized protocol. The information and outcomes of this workshop will help inform the **Illinois Attendance Commission's** work on identifying strategies, mechanisms, and approaches to help parents, educators, principals, superintendents, college faculty and administrators, and employer prevent chronic absenteeism.

The Illinois Attendance Commission was created in 2015 within the **Illinois State Board of Education** (ISBE) to study the issue of chronic absenteeism in the state and make recommendations for strategies to prevent chronic absenteeism. More information about the work of the commission can be found on the [Commission's website](#).

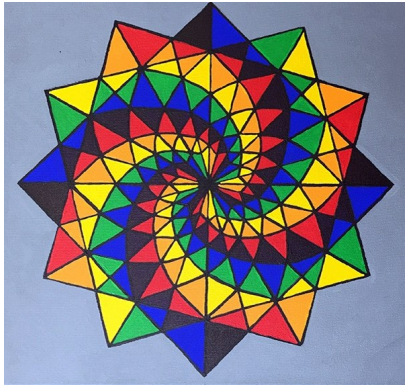
IBHE Student Art Exhibition

Mikayla Percich
Moraine Valley Community College



Passing Her Prime

Mary M. Phillips
John Wood Community College



Spinning Star

Student Laureates

In each issue of *The Bulletin*, we will feature student laureates recognized by the Lincoln Academy of Illinois.

University of
St. Francis



Laura Muñoz Lopez
Simpsonville, SC
Major: Business Administration
Minor: Political Science

VanderCook
College of Music



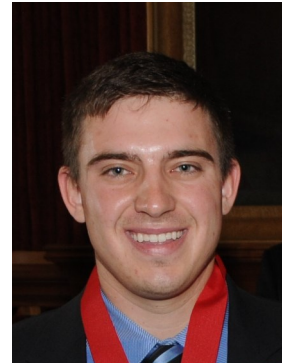
Kendall Jones
Lake Villa, IL
Major: Music Education

Western Illinois
University



Hannah Drake
Charleston, IL
Major: Forensic Chemistry
Minors: Philosophy and Mathematics

Wheaton
College



Kyle L. Mellinger
Ladera Ranch, CA
Major: Applied Health Science

In Case You Missed It

A few articles and reports worth the read:

[Chronicle of Higher Education](#): After ITT Tech's collapse, other colleges try to pick up the pieces, September 9, 2016.

[U.S. Chamber of Commerce](#): The conversation about America's skills gap is changing, September 9, 2016.

[Catalyst Chicago](#): Financial aid barriers limit college access for undocumented youth, September 12, 2016.

[WGN TV](#): President Maimon on the Steve Cochran Show, September 20, 2016.

[Illinois Channel TV](#): The economic and cultural impact of independent colleges and universities, September 20, 2016.

[Daily Herald](#): Taxpayers, students bridge funding gap for suburban community colleges, September 21, 2016.

IBHE

1 North Old State Capitol Plaza | Suite 333 | Springfield, Illinois 62701
217-782-2551 TTY 888-261-2881 email info@ibhe.org to subscribe