

## IBHE Update

### IDFPR Board of Nursing Report on Pre-Licensure Nursing Education Programs, Students and Faculty

[This report](#) is an analysis of trends in Illinois pre-licensure nursing education, including both faculty and students, from the years 2011-2015. The data for this report is collected on an annual basis from all Illinois pre-licensure nursing education programs by the **Illinois Department of Financial and Professional Regulation (IDFPR) Board of Nursing (BON)**. Disclosure of this annual mandatory report is required to maintain BON pre-licensure nursing education program approval, which is required for a nursing student to be eligible to take the nursing license examination (NCLEX).

Nurses are the largest group of health care providers in both acute-care and community settings in Illinois. An adequate, well-prepared and diverse nursing workforce depends upon academically rigorous education programs and adequate resources to prepare the next generation of high quality professional nurses. A key component in meeting nursing workforce supply is Illinois' ability to produce new nurses through pre-licensure nursing education system.

Analysis of the past five years of data collected presents several positive trends among Illinois' pre-licensure nursing programs. There has been growth in the number of programs available, as well as in enrollment, capacity, number of applicants and graduates. The pass rate for first-time test takers for the national nursing license exam for both the NCLEX-RN® and the NCLEX-PN® exam has either met or exceeded the national average. Both of these achievements illustrate how successful the various types of pre-licensure programs in Illinois have been in growth while still maintaining a high-quality educational experience.

The growth in the number of doctorally prepared nursing faculty is supportive of the Institute of Medicine's recommendation of doubling the number of doctorally prepared faculty by 2020 as well as the National League for Nursing's support of utilizing more doctorally prepared nurse educators. This increase in the number of doctorally prepared nursing faculty supports the ability to educate more nursing faculty who, according to the Illinois Board of Nursing, must have at least a master's degree in nursing to teach in the RN bachelor's degree and master's entry programs.

There has been an increase in the ethnic, racial and gender diversity among both faculty and students. Efforts continue as increased diversity has been shown to improve health care access, patient satisfaction, student attrition and graduation rates. The doubling of faculty vacancy rates from 2011-2015, suggests that continued encouragement of more nurses to pursue a career in nursing education is needed, as one-fifth of current pre-licensure nursing faculty in Illinois are eligible for retirement. There are multiple entry points into nursing education, opportunities for nurses to continue their education to better meet the health care needs of populations in the state. An adequate supply of nursing faculty impacts nursing programs' capacity and admission capabilities, as well as the number of nurses being produced annually to care for the citizens of Illinois.

IBHE has released a [2017 spring enrollment snapshot](#) from the Illinois public universities that includes information for the last three academic years. The report focuses on full-time-equivalent (FTE) enrollment at the graduate and undergraduate levels, as well as undergraduate and graduate FTE enrollment combined.

This spring semester (Academic Year 2016-17) total FTE enrollment at Illinois public universities is down, but the decline is largely being driven by the decline in undergraduate enrollment. In fact, total graduate enrollment has remained relatively flat over the past three academic years.

However, there was some variation between the public universities, as some experienced enrollment growth and others experienced enrollment declines. Total enrollment (full-time equivalent) across the 12 public universities for the spring semester of 2016-17 was 156,882, a -2.8 % difference from the previous year.

**Illinois Public Universities Total Enrollment**

	Spring 2015	Spring 2016	Spring 2017
<b>CSU</b>	3,641	3,356	2,485
<b>EIU</b>	7,032	6,659	5,558
<b>GSU</b>	3,662	3,720	3,555
<b>ISU</b>	17,862	17,837	17,272
<b>NEIU</b>	5,894	5,752	5,435
<b>NIU</b>	15,541	15,199	14,371
<b>SIUC</b>	13,412	12,792	12,440
<b>SIUE</b>	11,000	11,514	11,046
<b>UIC</b>	26,221	27,227	27,114
<b>UIS</b>	3,758	3,831	3,604
<b>UIUC</b>	44,250	44,825	45,895
<b>WIU</b>	9,198	8,621	8,107
<b>Total</b>	<b>161,471</b>	<b>161,333</b>	<b>156,882</b>

### [Illinois Community College Board \(ICCB\) Announces Spring Enrollments](#)

Compared to the same term one year ago, statewide spring 2017 headcount enrollments and full-time equivalent (FTE) enrollments at Illinois public community colleges both decreased. The spring 2017 semester headcount was 302,741 compared to 318,524 last year (a headcount decrease of 15,783 or -5.0 percent). The latest FTE count was 167,294 compared with 175,859 a year ago (an FTE decrease of 8,565 or -4.9 percent).

**Summary of Opening Spring Enrollments in Illinois Public Community Colleges**

	Spring 2013	Spring 2014	Spring 2015	Spring 2016	Spring 2017
Headcount	366,736*	341,722*	330,010*	318,524	302,741
% Change	-1.9%	-6.8%	-3.4%	-3.5%	-5.0%
FTE	206,203*	192,439*	184,036*	175,859	167,294
% Change	-2.4%	-6.7%	-4.4%	-4.4%	-4.9%

\* Adjusted Total

Despite the continued enrollment decreases statewide most Illinois community colleges continue to produce an elevated number of graduates annually. With 70,459 earned collegiate-level degrees and certificates, Fiscal Year 2016 had the second highest annual number of graduates recorded from the Illinois community college system.

[Governors State University \(GSU\)](#) received a second grant from the [Kresge Foundation](#) in December 2016. GSU was first funded with a 3-year \$875,000 grant in November of 2011 for their Dual Degree Program (DDP). Encouraged by the DDP's success, Kresge awarded GSU \$450,000 to disseminate the program nationally and to expand the Male Success Initiative (DDP-MSI). The DDP is a partnership with 17 Chicagoland community colleges that bridges the two-year degree to a four-year degree at GSU. It was founded in 2011. The MSI targets men of color. Its goal is to enroll, retain, and graduate men from minority groups. Both the DDP and MSI are hands-on in nature. They rely on outreach and mentoring to succeed.

Already a regional leader in student success and retention, GSU will use the \$450,000 from Kresge to share their initiative and techniques with colleges and universities across the country. "Receiving this second grant from Kresge allows Governors State University to deepen the work of the Dual Degree Program and Male Success Initiative in our community," **President Elaine Maimon** said. "The award also allows GSU to share these best practices in strength-based learning with the national higher education community. We are so honored to continue our partnership with Kresge in improving access to quality education." What Maimon means by "strength-based learning" is a paradigm shift in education. Instead of looking at deficits – what students don't know – this approach zeroes in on helping students to recognize what they already know and then building on these strengths. "I'll never forget," Maimon said, "being told by a student, 'This course is amazing, because it's showing me that I know things.' This was after one week in class."

---

At the **Illinois Science & Technology Coalition and Institute** (ISTC), the mission is to create a stronger innovation economy, working together with the state's universities, industry, high schools, startups, and a network of partner organizations. [The 2016 Annual Report](#) records that throughout the past year, ISTC and the affiliate Institute are achieving continued impact in data collection and policy advocacy and delivering high-quality education and innovation programs.

Key highlights from 2016 include:

- Celebrating continued growth and new insights from the Illinois Corporate-Startup Challenge, a national award-winning program that links emerging companies with large corporations through a highly curated matchmaking process.
- Releasing new data through the *Illinois Innovation Index* that highlighted Illinois' STEM talent supply and demand and demonstrated increased growth in entrepreneurial activity from our universities.
- Extending the scope of our education programs, which reach more than 2,000 students at 35 Illinois high schools, offering novel industry partnerships and mentor engagement that are enriching the state's STEM talent pipeline.

## Reducing Gaps for Underserved Students

[Illinois has a record number of high school graduates both taking and excelling on AP exams](#). The **College Board** has released data on the participation and performance of the graduating class of 2016 on **Advanced Placement** (AP) exams. Illinois continues to report record numbers of graduates both taking and excelling on AP exams, with **Joliet Township High School District 204** receiving the prestigious **District of the Year** award for its outstanding performance among all small-sized school districts in the United States and Canada.

"AP exams have a proven track record of giving students a valuable head start in their college coursework and can save students time and money toward earning their college degrees," said **State Superintendent of Education Dr. Tony Smith**. "Equity in Illinois means all students have the opportunity to learn at high levels and demonstrate their academic capacity."

Illinois has made it a priority to continue to increase access to these courses. In December 2016, the **Illinois State Board of Education** approved an agreement with the College Board to maintain the cost of taking AP tests at \$15 per exam for low-income students for the May 2017 test administration.

## People in the News

**Governor Bruce Rauner** has appointed **Dr. Sherry Eagle** to both the **Illinois Board of Higher Education** and the **Northeastern Illinois University** Board of Trustees. Eagle's education administrative background will be beneficial to the success of both boards.

Eagle currently serves as executive director for the Institute for Collaboration of **Aurora University**. In that role, she leads the institute's work including STEM and senior citizen initiatives along with community-wide projects that involved corporate, nonprofit and education partners. Past roles include being the Superintendent of the Aurora West School District 129 and the Vice Principal for science, mathematics, special education and reading at Thornwood High School.

Eagle graduated from the University of Illinois at Chicago. She received her master's degree from the University of Chicago and her doctorate from Northern Illinois University. She lives in Chicago.



---

**Governor Bruce Rauner** has reappointed **Jay Bergman** to the **Illinois Board of Higher Education**. Bergman's experience on the board and in management and finance bring an important perspective to the board.

Currently, Bergman is the president of J.D. Bergman Corporation, a land development company. He has served on the Illinois Board of Higher Education since 2001. He has also served as a member of the Illinois State University Board of Trustees. Additionally, he serves as a board member of the American Red Cross of Chicago and Northern Illinois, as a trustee of the Chicago Zoological Society and as a board member of the Community Foundation of Will County.

Bergman graduated from Illinois State University. He lives in Joliet.

---

**Southern Illinois University Edwardsville** Chancellor **Randy Pembrook** has named [Dr. Denise Cobb as provost and vice chancellor for academic affairs](#). The selection is pending Board of Trustees approval. Cobb served as the interim provost since October 2015. Prior to that appointment, she was assistant provost for academic innovation and effectiveness, and then associate provost for academic affairs since June 2012.

"The search committee and Chancellor Pembrook have made the absolute right decision for the SIUE campus community, and I want to congratulate Dr. Cobb on being recommended to the SIU board of trustees for the provost's position," said **SIU President Randy Dunn**.

"Denise has been a great steward during her interim service and this appointment will allow her to continue the positive steps she already has underway for the benefit of our students, faculty and academic staff. I've enjoyed working with her this past year and look forward to doing so in the future."







[Dr. James Forstall](#), a military veteran and the Springfield *State Journal-Register's* **First Citizen for 2016**, died March 3 at the age of 85. "He will be remembered most as an educator," **Guerry Suggs**, a friend of Forstall's. "His work with young people and mentoring of young people and developing them so they had the opportunity to reach their potential was tremendous."

He served in the military for 20 years, spending time in Europe and in combat in the Korean and Vietnam wars. A stint training Army National Guard troops brought him to Springfield in 1968. In addition to his military service, he has held a number of positions in higher education. Forstall worked as administrative assistant to the president of the former **Sangamon State University** (now the **University of Illinois at Springfield**), vice president of student services at **Lincoln Land Community College**, associate director of grants administration for the **Illinois Board of Higher Education**, and as dean of **Southern Illinois University School of Medicine**.

## Upcoming Events

**Annual Legislator Forum 2017:** What the Every Student Succeeds Act Means for State Leaders and Communities

March 14, 2017, 6:00 – 8:00 pm | State House Inn, 101 E. Adams St., Springfield, IL

Now in its sixth year, the **Annual Legislator Forum** brings together legislators, thought leaders, practitioners, and others to discuss a hot topic in education. This year's keynote speaker, **Ryan Smith** of **Education Trust - West**, will explore how Illinois can create a school accountability system that sets fair, clear and ambitious expectations for all schools and supports improved learning experiences that meet the needs of all students, especially low-income students, students of color, students with disabilities, and English learners.

Over the last year, the Illinois State Board of Education (ISBE) has proactively sought and received feedback from stakeholders statewide on its plan for ESSA. **Illinois State Superintendent of Education Dr. Tony Smith**, as well as Ryan Smith and other stakeholders, will answer attendees' questions about the development and implementation this new plan with its far-reaching implications for Illinois' education system.

[Click here to register.](#)



Time is running out to submit your interest session proposals for the 2017 **College Changes Everything** (CCE) conference: *Equity in College and Career Readiness Initiatives – Ensuring That All Students Are Equipped for Success*.

As the conference brings together a diverse group of stakeholders, we are encouraging proposals that cover a wide range of themes related to college access and completion such as, but not limited to: college and career readiness; student retention, persistence, and completion; education, business, and the economy; and college costs and affordability. Sessions should provide in-depth information, practical ideas, and specific strategies for the audience, and demonstrate and promote positive steps taken to address these issues and sharing of specific lessons learned.

Priority consideration will be given to completed [session proposal forms](#) submitted by March 17, 2017. [More information about interest session submission and the conference can be found here.](#)

# IBHE Student Art Exhibition

**Mariah Anne Rolinitis**

Danville Area Community College



**Blue Vellum Frog**

**Jessica Sykes**

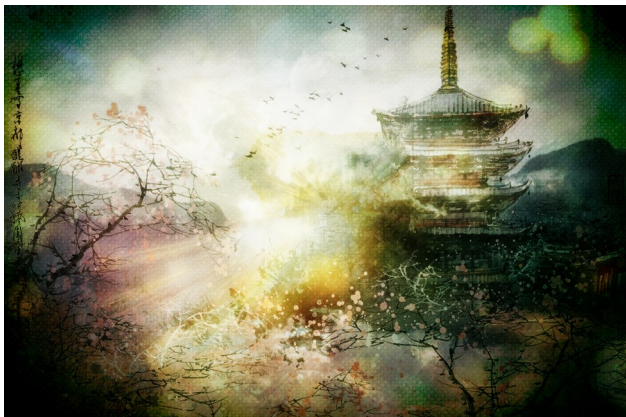
Danville Area Community College



**Eye of the Storm**

**Yu-hui Huang**

University of Illinois at Chicago



**Mindfulness**

**Jeanne Meyer**

Lewis & Clark Community College



**Gold Bowl**

**Lindsay Washington**

Southern Illinois University Carbondale



**Laurels Wreath**



## Student Laureates

Illinois Wesleyan  
University



**Paige Buschman**

Lemont, IL  
Sociology

Judson  
University



**Nicholas Modlin**

Wheeling, IL  
Mathematics/  
Secondary  
Education

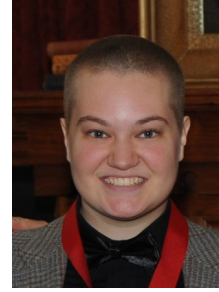
Knox  
College



**Joshua W. Tvrdy**

Tucson, AZ  
Creative Writing  
Religious Studies

Lake Forest  
College



**Medora Sweet**

St. Paul, MN  
Art and Design

Lewis  
University

**Alexandria Austring**

Aroma, IL  
Political Science and  
Paralegal Studies  
Philosophy of Law

The Lincoln Academy wants to know what past Laureates have been up to since being named [the Lincoln Academy of Illinois](#) Student Laureate. Please call 217.785.5030 or e-mail [Julie Kellner](#) to share your story!

## In Case You Missed It

A few articles and reports worth the read:

[State Journal-Register](#): SIU medical, dental clinic to open in Lincoln, March 8, 2017.

[News-Gazette](#): Higher-ed leaders: More state cuts would be devastating, March 8, 2017.

[Chicago Tribune](#): Education, immigration complaints on the rise, attorney general says, March 7, 2017.

[Chicago Tribune](#): Governors State cuts 22 degrees, hikes tuition 15 percent due to budget stalemate, March 6, 2017.

[State Journal-Register](#): Local colleges in a bind again over unfunded MAP grants, March 4, 2017.

[Chicago Tribune](#): Hundreds of NEIU students to lose jobs as all employees take required furlough days, March 3, 2017.

[Quad-City Times](#): Editorial: When colleges become a luxury, March 3, 2017.

[Press Mentor](#): Western 'hopeful' as state budget stalemate drags on, March 2, 2017.

[Chicago Tribune](#): U. of I. plans tuition freeze, major enrollment growth, January 19, 2017.

# IBHE

1 North Old State Capitol Plaza | Suite 333 | Springfield, Illinois 62701  
217-782-2551 TTY 888-261-2881 email [info@ibhe.org](mailto:info@ibhe.org) to subscribe