

College Changes Everything

October is College Changes Everything Month in Illinois!



The state's two-year budget delay created significant challenges for postsecondary education and for college and would-be college students. Now that the state has a budget in place, it's time to get Illinois students on track – or back on track – for college.

For a second year, **Governor Bruce Rauner** has [proclaimed](#) October [College Changes Everything Month](#) (CCE Month), when the [Illinois Student Assistance Commission](#) (ISAC) and partners will be assisting students with college applications and putting them in the best position possible to receive the funding they need to attend.

ISAC developed CCE Month as a statewide effort to assist students who, as a result of changes made by the **U.S. Department of Education** last year, now file both college and financial aid applications in the fall. While ISAC provides free assistance to students and families year round, during CCE Month in October ISAC and partners support well over a

thousand workshops that assist students with finding the college that is right for them, completing college applications, and filling out the FAFSA, the application for all federal financial aid and some state aid, including the Illinois **Monetary Award Program** (MAP) grant. Because there is more demand than funding for grants like MAP, students will want to complete the 2018-19 FAFSA as soon as possible after October 1 in order to have the best chance of getting funding.

Many CCE Month workshops are supported by the [ISACorps](#), a group of recent college graduates working statewide who are extensively trained in assisting students with planning, applying, and paying for college. To find your local ISACorps member, visit [studentportal/isac.org/isacorps](#); to search by zip code for a free public event near you, visit [studentportal/isac.org/events](#). Students and parents should also check directly with their high schools for events within their own school.

ISAC will also be providing answers to financial aid questions during five [Facebook Live](#) (@ILStudentAssistance) events from 7-7:30 pm CST on October 3, 11, 16, 23, and 30. Personalized assistance is also available through [ISAC College Q&A](#), a text messaging service where students can get answers to their college and financial aid questions sent directly to their phones, and through the agency's call center, 1-800-899-4722 (ISAC). The [ISAC Student Portal](#) also offers free online tools and resources to help students navigate the college-going and financial aid process.

High schools and counselors who would like to participate in College Changes Everything Month can find information and a [downloadable toolkit](#).

OCTOBER IS COLLEGE CHANGES EVERYTHING[®] MONTH!

IT'S TIME TO COMPLETE YOUR COLLEGE APPLICATIONS and file your 2018-19 FAFSA[®], which will be available on October 1, 2017

JOIN US ON FACEBOOK LIVE IN OCTOBER!
Get answers to your financial aid questions on Oct 3, 11, 16, 23, and 30th
7-7:30 pm CST @ILStudentAssistance

[Palatine-Schaumburg High School District 211](#), [Harper College](#), and [Northern Illinois University](#) have been selected to participate in a one-year "design challenge" that aims to dramatically increase bachelor's degree completion for community college students. The **Michael and Susan Dell Foundation** is funding the nonprofit [Education Design Lab](#) to lead the Seamless Transfer Pathway Design Challenge. Harper, NIU, and District 211 are among four groups of two- and four-year institutions chosen nationwide for the grant.

"We know that through our partnerships, we are able to achieve more together than we ever could individually," Harper College **President Ken Ender** said. "If we are going to increase baccalaureate completion in a transformational way, we must begin to think of the high school, community college and university as a single network."

Harper, NIU and District 211's proposal aims to reduce the time and cost of earning a bachelor's degree with a goal of a 30 percent increase in the number of Harper students who go on to graduate from NIU within six years. Several initiatives will make this possible including:

- **Power of 15:** Based on research showing students who enter college with 15 credits are twice as likely to graduate with a four-year degree, the Power of 15 program increases opportunities for students to earn college credit while still in high school.
- **Reducing remediation:** Opportunities will be expanded for students to take developmental English and math courses during their senior year of high school so they enter Harper automatically eligible for college-level courses.
- **Reduction in "wasted" credits:** Continued alignment of pathways will ensure students take courses they need to successfully complete their desired program.
- **Early college credit:** Students will take college credit courses while in high school at a sharply reduced cost.
- **Promise Scholarship:** Students can earn up to two years of free tuition at Harper by meeting benchmarks in the areas of attendance, rigor, quality, persistence and community service.
- **Unified transition advising:** Students will be advised through a coordinated, case management effort that will serve them from high school to completing their bachelor's degree at NIU.
- **Guaranteed enrollment:** If students stay on their pathway and meet minimum requirements, they will not need to apply for admission to NIU after completing Harper.

The design challenge will provide the schools with coaches, access to experts and reimbursement for national meetings and design sessions. Pilot programs developed over the next year will be launched in fall 2018 and results tracked for six years.







Increasing Affordability



In consultation with three of the largest Illinois public universities – University of Illinois at Urbana-Champaign (UIUC), University of Illinois at Chicago (UIC), and Illinois State University (ISU) – IBHE developed estimates of what in-state students pay for tuition and fees after factoring in all discounting (MAP, Pell, institutional need- and merit-based aid, and private scholarships). Student loans and work study were not included in the discounting. For comparison purposes, an estimate of what a typical Illinois resident would pay for tuition and fees after factoring in all tuition discounting at three out-of-state institutions – Purdue University, Indiana University Bloomington, and the University of Missouri-Columbia (Mizzou) – was also calculated.

The analysis focuses on three different comparisons: 1) full weighted tuition and fees for the Illinois institutions relative to advertised tuition and fees for the out-of-state institutions in AY 2016-17; 2) the estimated average amount paid for tuition and fees after all discounting by all in-state students at the Illinois public universities compared to the estimated average paid by all domestic non-resident

students at the out-of-state schools; and 3) the estimated average amount paid for tuition and fees among those receiving any sort of discount.

Academic Year 2016-17					
IBHE Full Weighted Tuition and Fees for all in-state undergraduate students*			Advertised Tuition and Fees for domestic out-of-state undergraduate students**		
					
University of Illinois at Urbana- Champaign	University of Illinois at Chicago	Illinois State University	Indiana University Bloomington	Purdue University	University of Missouri
\$17,555	\$16,000	\$13,585	\$34,246	\$28,804	\$25,998
*includes mandatory student health insurance.			**does not include mandatory student health insurance		

At face value, it would appear that it is significantly less expensive for an Illinois resident to enroll in-state. However, most Illinois residents don't pay the full advertised amount for tuition and fees. In fact, the majority of Illinois residents receive some form of tuition discounting whether they enroll in-state or out-of-state (assuming the Illinois residents enrolled at out-of-state institutions follow the pattern of all out-of-state students enrolled at those institutions). A slightly higher percentage of out-of-state students at Indiana University, Purdue University, and the University of Missouri received some form of tuition discounting when compared to residents at the Illinois public universities (66% to 59%). For context, student health insurance fees are included in the Illinois totals but not in the out-of-state totals; although the mandatory fee is waivable if the student has health insurance from another source. This mandatory, but waivable fee ranges from \$498 at ISU, to \$640 at UIUC, and \$1,140 at UIC.

[Click here for the full IBHE DataPoint.](#)

IBHE News

The **IBHE Student Advisory Committee** (SAC) met September 9 and elected student Board members and SAC officers:

- Student Board Member: **Natalie Pieper**, Loyola University Chicago;
- Nontraditional **Student Board Member**: Akya Gossitt, Governors State University;
- SAC Chair: **Erin Fleshren**, McKendree University; and
- SAC Secretary: **Allan Daly**, Augustana College.



L to R: Allan Daly, Natalie Pieper, Akya Gossitt, and Erin Fleshren

Plans are underway for three scheduled meetings of the IBHE-SAC for December 8-9, March 2-3, and June 1-2. Dozens of Illinois community colleges, public universities, and private colleges have designated student voting representatives from their campuses to participate in the meetings. Final locations and an agenda for the December 8-9 meeting will be distributed very soon. For more information, contact [Candace Mueller](#), staff liaison to the IBHE-SAC, or visit the [IBHE-SAC Facebook group](#).

People in the News



[Heartland Community College President Rob Widmer](#) has announced his retirement effective June 30, 2018. Widmer has served as president since 2013, the third in the college's 26-year history.

"Few people have had as much impact on Heartland Community College and higher education in our district than Rob Widmer," says Board of Trustees President **Gregg Chadwick**. "He has relentlessly and tirelessly worked to secure Heartland's rightful place as a pillar of this community and we wish him the best as he retires from the presidency at Heartland."

In a communication to Heartland employees, Widmer thanked them for their outstanding work and called his time as president a tremendous experience. He will leave having served over 40 years in Illinois higher education with 22 years at Heartland.

[William R. Monat](#), Northern Illinois University's eight president, died on September 23 in his home in Jupiter, Florida, at age 93. He worked as an NIU professor from 1969 to 1971 and then returned as vice president in 1976 before becoming president, serving from 1978 to 1984.

Acting President Lisa Freeman issued a statement Monday afternoon regarding Monat's passing. "All of NIU is saddened by the passing of William Monat," Freeman said. "His contributions to the creation of the NIU College of Law and the College of Engineering and Engineering Technology helped cement the reputation of NIU as a well-rounded university prepared to meet the needs of our region. He was a visionary whose impact can be felt to this day."

After serving as NIU president, Monat was appointed as the first chancellor of the Board of Regents governing NIU from 1984 to 1986. That board was established in 1967 and was set up to manage NIU, Illinois State University, and Sangamon State University (now University of Illinois at Springfield).



Beth Purvis has joined the [Kern Family Foundation](#), after leaving her post as **Illinois Secretary of Education** on September 15. As senior program director, Purvis leads the K-12 and Character Program in strengthening and forging relationships with some of the leading educational and character organizations. Purvis brings to the Foundation nearly 30 years of expertise in educating and developing the whole child. Prior to joining the Foundation, Purvis served as the Secretary of Education for the State of Illinois. While serving in this capacity, Purvis was chair of several governor-appointed councils focused on advocating for cohesive education opportunities for every child. Purvis earned her bachelor's degree from Bucknell University, her master's degree from Columbia University, and her doctorate of education at Vanderbilt University.

Upcoming Events

The Illinois Education Research Council announces the **15th Annual Focus on Illinois Education Research Symposium**

November 9 – 10, 2017
at the NIU Conference Center, Naperville, IL

[2017 Symposium Registration and Schedule](#)

[Online Registration](#)



The **Great Central U.S. ShakeOut** earthquake drill is a great opportunity for your entire campus community to learn, get prepared, and practice what to do during earthquakes ("Drop, Cover, and Hold On!"). More than 55 million people participated last year. All colleges and universities are encouraged to participate in ShakeOut on **October 19, 2017, at 10:19 a.m.** This Shakeout will be part of an international event involving millions of participants from more than 40 states and territories and several countries.

If your college is not listed at ShakeOut.org, please [register today](#).

To organize a more extensive exercise of a campus's emergency plan, [resources available](#) for use before and during the drill include:

- "ShakeOut Drill Broadcast" recordings, for playing during your drill over PA systems, campus radio stations or computers;
- Posters, flyers, drill manuals, videos and other printed materials;
- ShakeOut web banner images to place on your website.

Please contact [Jason Williams](#) at the Illinois Emergency Management Agency if you have any questions.

Other News

Fiscal Year 2018 Nurse Educator Fellowships

The **Illinois Board of Higher Education** is seeking nominations for the Fiscal Year 2018 **Nurse Educator Fellowship** program. This program is intended to help retain well-qualified nursing faculty in pre-licensure RN programs offered by Illinois institutions of higher education. Nineteen fellowships will be awarded this year. The eligibility criteria, award amounts, process, conditions of award, and instructions to apply are in the [application packet](#). All application materials are due October 31, 2017.

Fiscal Year 2018 Nursing School Grants

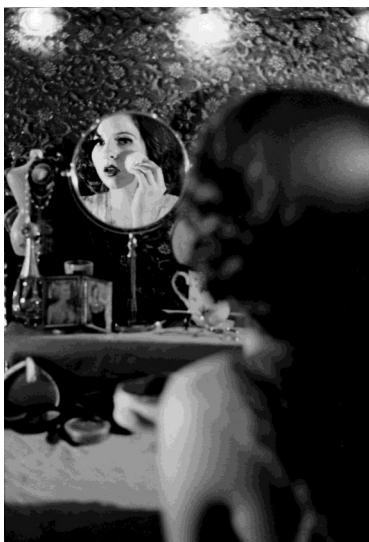
The **Illinois Board of Higher Education** will be awarding **Nursing School Grants** to Illinois institutions of higher education that prepare registered nurses at the associate and baccalaureate level. The purpose of the program is to increase the number of registered nurses with high-quality postsecondary credentials to meet the demands of the Illinois economy. Nursing programs that meet the eligibility criteria for either an Expansion Grant or an Improvement Grant are invited to apply. The eligibility criteria, award amounts, approval process, use of funds, and instructions to apply are provided in the [application packets](#). All application materials are due October 31, 2017.

IBHE Student Art Exhibition

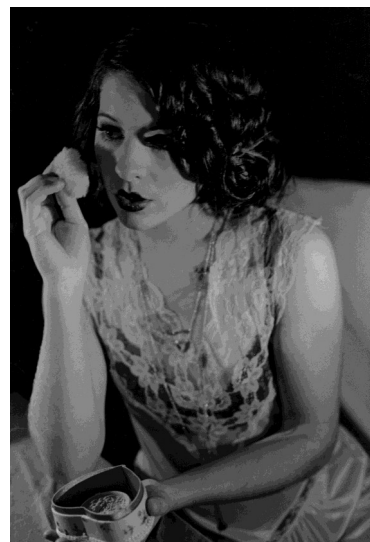
Breann Lehen, Heartland Community College



Untitled



Untitled



Untitled

In Case You Missed It

[IBHE, ICCB, ISAC, and FIICU](#): Joint statement on Rescission of DACA, September 8, 2017.

[Chicago Tonight/WTTW-PBS](#): How Arrupe College is reinventing higher education, September 12, 2017.

[State Journal-Register](#): Memorial nurse's career journey goes 'viral' on Facebook, September 14, 2017.

[Crain's Chicago Business](#): Not just for trades: Aon wants other white-collar firms to adopt its apprenticeship program, September 18, 2017.

[State Journal-Register](#): Ralph Martire: Illinois needs to make higher education a priority, September 19, 2017.

[News Tribune](#): NIU, P-20, IVCC work to raise number of Illinoisans with degrees, September 25, 2017.

[Bloomington Pantagraph](#): University rankings among reforms offered by Brady, Rose, September 26, 2017.

IBHE

1 North Old State Capitol Plaza | Suite 333 | Springfield, Illinois 62701
217-782-2551 TTY 888-261-2881 email info@ibhe.org to subscribe