

60 x 2025

IBHE DataPoints

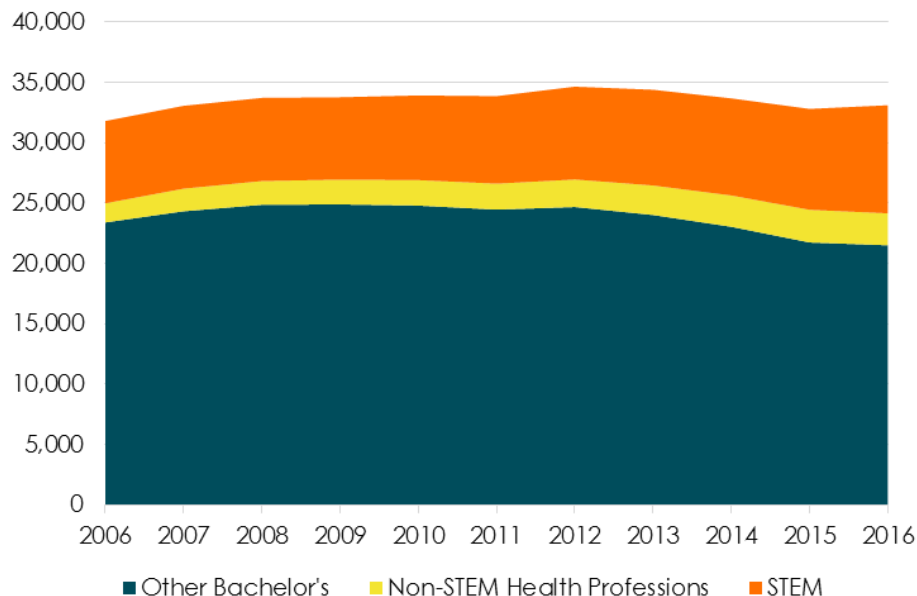
Over the last decade, bachelor's degree production in Science, Technology, Engineering, and Mathematics (STEM) and in the health professions at Illinois public universities has significantly increased both in real numbers and in the proportion of all bachelor's degrees awarded. This is noteworthy as such degrees have been included in IBHE's performance funding formula as bonus metrics for a couple of reasons: 1) the expense associated with the academic programs, as many require laboratories, clinical settings, etc.; and 2) their importance to growing the Illinois economy.

In 2006, STEM and Health degrees accounted for just over one-quarter (26%) of all of the bachelor's degrees awarded by the public universities. However, in 2016, such degrees accounted for 35% of all bachelor's degrees awarded.

More importantly, the proportional increase in STEM and Health degrees was accompanied by a 4% overall increase in the number of bachelor's degrees awarded. In other words, STEM and Health degrees have become relatively larger pieces of a larger pie.

[Click here](#) for the full IBHE DataPoint.

**Bachelor's Degree Production
at Illinois Public Universities from 2006 through 2016**



Governor Bruce Rauner and the **University of Illinois System** unveiled plans for an [Illinois Innovation Network \(IIN\)](#) to help ignite the state's economy through a \$1.2 billion network of research universities, businesses, and public sector partners focused on the development of solutions in computing and big data, advanced materials, food and agriculture, and biosciences and health. The network will help ensure a knowledge-based, 21st century economy in Illinois where discovery and innovation are the focal points. The plan is to nurture the inventors and entrepreneurs of tomorrow by allowing them to hone their talents in Illinois. The network will be led by the University of Illinois System, with universities in Urbana-Champaign, Chicago, and Springfield and satellite campuses in Peoria and Rockford. The University of Chicago and Northwestern University will be inaugural partners.

"We anticipate that over time other Illinois state universities as well as world renowned international research universities will join the network to help spread Discovery Partners Institute's impact around the state and around the world," Governor Rauner said.

In Illinois, more than 1.2 million adults do not have a high school diploma or equivalency certificate. At the same time, a more demanding economy means that 70% of all jobs in Illinois will require some form of education and training beyond high school. To confront these challenges, today the **Illinois Community College Board** (ICCB) announced the formation of [the Statewide Task Force on the Future of Adult Education and Literacy](#) to develop a strategic plan to guide adult education and literacy services over the next five years.

The Task Force, authorized through **Senate Joint Resolution 40**, will focus on ensuring that adult learners have access to basic education and literacy activities, high quality career pathways and postsecondary education, and training programs in high demand occupations. "Adult education isn't about getting students a high school equivalency certificate anymore. It's about preparing them for training programs that can get them good jobs," said **Dr. Karen Hunter Anderson**, executive director of ICCB and chair of the Task Force.

Members of the Task Force include:

- **Dr. Karen Hunter Anderson**, Illinois Community College Board (Chair)
- **Arlene Anderson**, Urbana District 116
- **Emily Bastedo**, Office of Governor Bruce Rauner
- **Senator Jennifer Bertino-Tarrant** (D-49)
- **Eddie Brambila**, Illinois Student Assistance Commission
- **Sharon Bush**, Grand Victoria Foundation
- **Shayla Grantham**, Illinois State Board of Education
- **Representative Norrine Hammond** (R-93)
- **Peggy Heinrich**, Elgin Community College
- **Lisa Jones**, Department of Commerce and Economic Opportunity
- **Mark Jontry**, Illinois Association Regional Superintendents Schools
- **Nick Kachiroubas**, Illinois Community College Board
- **Joanne Kantner**, Kishwaukee College
- **LaTanya Law-Fountain**, Illinois Department of Human Services
- **Jeff Mays**, Illinois Department of Employment Security
- **Tawanna Nickens**, Illinois Adult and Continuing Educator's Association
- **Beth Paoli**, Illinois State Library Secretary of State
- **Stephen Richard Alderson**, Instituto Del Progreso Latino
- **Representative Thaddeus Jones** (D-29)
- **Senator Chuck Weaver** (R-37)
- **Dr. Terri Winfree**, Prairie State College
- **Amanda Winters**, Illinois Board of Higher Education

The first meeting of the Statewide Task Force on the Future of Adult Education and Literacy was held on October 23. The Task Force will submit its strategic plan to the Governor and General Assembly by January 31, 2018. Those wanting more information may contact [Jennifer Foster](#), ICCB Deputy Director for Adult Education and Workforce.

[Illinois community college system opening fall 2017 enrollments](#) continue to decline. These opening enrollments reflect the end of the regular fall registration period which is usually the 10th day of class. Fall 2017 enrollments show a decrease in headcount (-3.5 %) and a decrease in the number of full-time equivalent enrollments (-3.7 %) compared to last year. Systemwide, 293,533 students enrolled at Illinois community colleges in credit coursework in fall 2017. The number of students enrolling in credit courses at Illinois community colleges as of the end of regular registration for fall 2017 is 10,640 fewer than in fall 2016.

Increasing Affordability

Each year, the Illinois Legislative Latino Caucus Foundation awards scholarships to outstanding Illinois students of Latino heritage who are attending undergraduate programs in colleges and universities. This year's individual scholarships will be \$2000 each and approximately twenty-five scholarships will be awarded. Scholarships are competitive and based on completed applications submitted by individual students.

Application materials/guidelines are now available at the [ILLCF website](#). Applicants may either download and mail completed forms or apply directly online. The deadline for completed applications is December 8, 2017. Winners will be announced at the end of January 2018.



Increasing Adult Degree Completion

[The Education Justice Project \(EJP\) at the University of Illinois](#) (U of I) is expanding its academic programs for men in prison with the support of a three-year, \$1 million grant from the **Andrew W. Mellon Foundation**. Based in the College of Education, EJP offers education programs to men incarcerated at the **Danville Correctional Center**, a medium security state prison in Danville, Illinois. The comprehensive college-in-prison program, which has served students at Danville since 2008, includes upper-division college courses taught by U of I faculty members and advanced graduate students, educational workshops and extracurricular activities such as an anti-violence group, an English as a second language program, a guest lecturer series, reading groups and tutoring.

The Mellon Foundation funding will enable EJP to expand the number of courses at Danville so that incarcerated students can take two courses each semester and progress more quickly toward certificates, said **Rebecca Ginsburg**, the director of EJP. In conjunction with other college-in-prison programs and allies such as the **Illinois Department of Corrections**, Ginsburg is exploring development of a statewide higher education program that would enable colleges and universities to offer degree programs to incarcerated students. A portion of the Mellon grant will support quarterly meetings of this group, called the **Illinois Coalition for Higher Education in Prison**.

People in the News



[Western Illinois University Department of Communication Academic Advisor Jennifer Grimm](#) has accepted the Outstanding Advising Award – Primary Advising Role by the National Academic Advising Association (NACADA). The award is given to an individual who has demonstrated qualities associated with outstanding academic advising of students. The Academic Advising – Primary Role category includes those whose primary role at their institution is the direct delivery of advising services to students.

"We are extremely fortunate to have Jennifer as a member of the department of communication here at Western Illinois University," said Communication Chair **Peter Jorgensen**. "I can wholeheartedly attest to the fact that Jennifer consistently performs at a level that surpasses normative expectations in the execution of her assigned job responsibilities within our department. Jennifer does not simply 'do' her job on a daily basis; she actively seeks to excel in that job in a manner that is both consistent and exemplary."

NACADA provides a network and professional identity for the thousands of faculty, full-time advisors and administrators whose responsibilities include academic advising.

Upcoming Events

ISAC is answering financial aid questions
on Facebook Live during College Changes Everything Month!



COLLEGE CHANGES EVERYTHING MONTH

OCTOBER IS COLLEGE CHANGES EVERYTHING MONTH!

IT'S TIME TO COMPLETE YOUR COLLEGE APPLICATIONS and file your 2018-19 FAFSA®, which will be available on October 1, 2017

JOIN US ON FACEBOOK LIVE IN OCTOBER!
Get answers to your financial aid questions on Oct 3, 11, 16, 23, and 30th
7-7:30 pm CST @ILStudentAssistance

SAVE THE DATES: IBHE Student Advisory Committee has three scheduled meetings for this academic year.

- Friday, December 8, beginning at 5:00 pm until 8:00 pm and Saturday, December 9, from 9:00 am until Noon, 2017, at Illinois State University in Normal.
- Friday, March 2 and Saturday, March 3, 2018, at Governors State University in University Park.
- Friday, June 1 and Saturday, June 2, 2018, at Lewis University in Romeoville. Election will take place for 2018-19 student leadership.

Details about the December meeting will be sent to student voting representatives, student body presidents, and staff advisors already on file. All Illinois community colleges, public universities and private colleges and universities are invited to send student government leaders to participate at these meetings. Use this [student voting representative form](#) to designate your campus's designated student to participate as a voting member during the business meetings, if your campus has not already done so.

Other News

[Funding is available](#) for organizations, **including colleges and universities**, interested in administering **AmeriCorps** programs in Illinois. AmeriCorps programs are designed to improve education and health care, protect public safety, safeguard the environment, provide disaster relief, and promote civic engagement in communities across Illinois.

Each year, AmeriCorps members dedicate a year of their lives to get things done in their communities. Members work with disadvantaged youth, veterans and their families, people with disabilities, the homeless, and many other individuals who need a helping hand to succeed. Serve Illinois administers the AmeriCorps state programs in Illinois and is charged with enhancing and supporting community volunteerism. AmeriCorps is funded by the federal Corporation for National and Community Service.

AmeriCorps members receive student loan deferment and training. Full-time members are also eligible to receive a modest living allowance and health insurance. Members who successfully complete their service receive an educational award to help pay for college, graduate school, vocational training, or to pay off student loans. If the member is 55 or over, they may transfer the education award to a child, grandchild, or foster child.

Serve Illinois will host mandatory webinars. Webinar details and information about the application process are available at www.Serve.Illinois.gov. Applications are due by December 1, 2017.

Waubonsee Community College has enrolled its 300,000th student in its 51st year serving the district. **Hannah Polhill**, from Yorkville, is a freshman and a Gustafson Scholar majoring in business at Waubonsee. She intends to transfer to a four-year institution and study both business and psychology. As part of the Gustafson Program, Polhill participates in community service projects throughout the school year. Earlier this year she volunteered at the Fox Valley Marathon. She plans to do future community service projects with the Kendall County Public Action to Deliver Shelter (PADS), a program that provides services for the homeless or those otherwise in need of services.



Polhill had no way to know that she would be the 300,000th student to enroll at Waubonsee when she registered for classes earlier this year. In fact, she didn't know that she was until a few weeks into the semester. "It's an honor. I feel like I won the lottery," she said.

The milestone is significant for the college, too. "Enrolling the 300,000th student in the first year after our 50th anniversary celebration makes this particularly special," said **Faith LaShure**, Dean for Enrollment Management.

In addition to recognition at the October meeting of the Board of Trustees, Polhill received a Director's Scholarship of \$1,000 from the Waubonsee Community College Foundation.

IBHE Student Art Exhibition

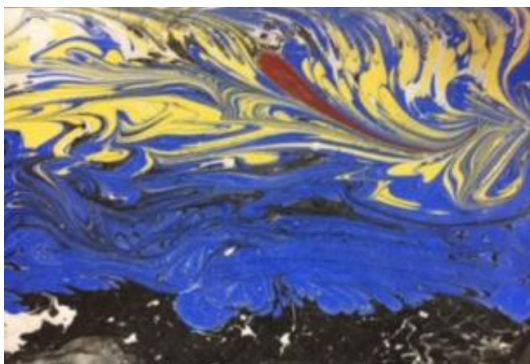
IBHE's Annual Student Art Exhibit: Call for Artists

IBHE is accepting submissions to its third annual long-term student art exhibition. This exhibition is open to all students at Illinois colleges and universities, regardless of program of study. Artwork will be selected by a committee of IBHE employees and will reside on loan to IBHE for one year. [Click here for a Call for Artists](#) with specifications and conditions. Please note that, due to display concerns, only wall art will be considered. Submissions are due November 15, 2017; selected works will be displayed at IBHE from January to December 2018.

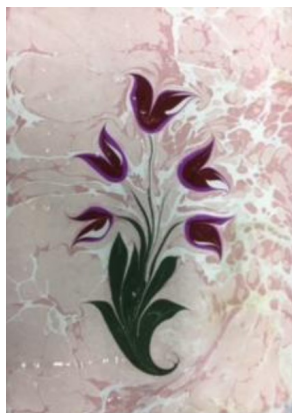
Last year's exhibit featured 75 works of art from 15 Illinois colleges and universities. The exhibit was enjoyed by staff and hundreds of visitors.

Submissions may be emailed to [Cindy Deitsch](#) or mailed to the IBHE office.

**Ann Heinrichs,
American Islamic College**



Ebru Starry Night with Comet



**Five-Stem Tulip,
Necmeddin Style**



**Three-Stem Tulip,
Necmeddin Style**



**Princess Peony at
the Dance**

Nikoletta Raso, Lake Forest College



Blue Rebirth



Expressive Flamingo



Blood Rebirth



Butterfly Seahorse

In Case You Missed It

[The Atlantic](#): The decline of the Midwest's public universities threatens to wreck its most vibrant economies, October 15, 2017.

[Crain's Chicago Business](#): U of I's new med school takes a step forward, October 16, 2017.

[Daily Chronicle](#): NIU board leader donates \$25,000 to CHANCE scholarships, October 17, 2017.

[Daily Egyptian](#): Dunn says system priorities this year are diversity, administrative cost-saving, supporting K-12 in region, October 18, 2017.

[WUIS-91.9/Illinois Public Radio](#): Illinois higher education board looks to move past budget impasse, restore confidence, October 23, 2017.

IBHE

1 North Old State Capitol Plaza | Suite 333 | Springfield, Illinois 62701
217-782-2551 TTY 888-261-2881 email info@ibhe.org to subscribe