



ILLINOIS BOARD OF HIGHER EDUCATION

Annual Report
July 1, 2020 to June 30, 2021

JB Pritzker | Governor

John Atkinson | Board Chair

Mission

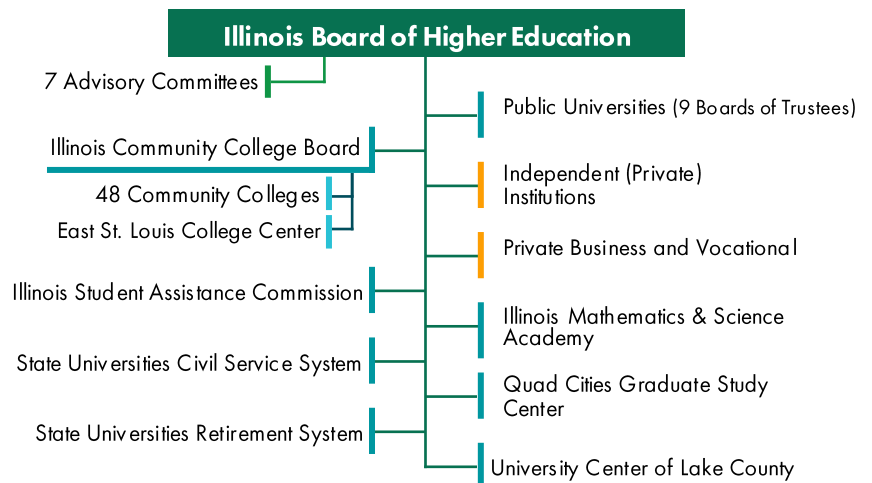
IBHE is responsible for planning and coordinating the state's system of higher education in five major areas:



Structure of Higher Education in Illinois

IBHE makes budget recommendations and grants operating authority and program approval for public higher education agencies and organizations and private institutions.

Legend: green is IBHE, blue denotes a public entity with a separate governing board, and orange indicates private institutions under IBHE authority.



IBHE is charged with developing and implementing a strategic plan for higher education in Illinois. In collaboration with ICCB & ISAC, IBHE developed **A Thriving Illinois: Higher Education Paths to Equity, Sustainability, and Growth.**

Higher education has always been a path to a better future, for individuals, communities, and the entire state of Illinois. The challenge of the next decade is to focus on creating broad paths to a prosperous future for every learner, leader, and community that we engage. We can do this with a commitment to a higher education ecosystem that reinforces equity, sustainability, and growth. That's the vision of a thriving Illinois.

The Strategic Planning Process

In fall 2020, IBHE Board members and staff, with the Illinois Community College Board, the Illinois Student Assistance Commission, and other stakeholders, launched a nine-month public stakeholder engagement process designed to address systemic inequities, the needs of the state's economy, and postsecondary attainment. Nearly 10,000 survey respondents and more than 400 focus group, advisory committee, and design work group members contributed to this plan. Data analysis supported the process, highlighting stark attainment gaps for African American, Latinx, low-income, and rural students. And six core principles guided the process:

- Students are our priority
- Higher education is a public good that enriches life
- Equity drives our system
- We reinforce the P-20 education continuum
- Our diverse institutions work in concert
- Talent, research, and innovation drive our economy

Three Goals: Equity, Sustainability, and Growth

The strategies outlined in **A Thriving Illinois** are designed to close equity gaps, create educational paths that are financially sustainable for students and higher education institutions, and foster economic and institutional growth for a thriving Illinois.



Equity Strategies: Close gaps for students who have been left behind

- Support learning renewal and student supports
- Implement institution-level equity plans and practices
- Use equitable talent management to increase and retain faculty, staff and trustees of color
- Consider a direct admissions program to simplify college search and admissions
- Provide more pathways through higher ed for adults
- Expand equitable access to early college coursework for high school students
- Support implementation of developmental ed reform
- Expand college access and support models to improve college-going and completion



Sustainability Strategies: Build a stronger financial future for individuals and institutions

- Invest in public higher education through an equitable, stable, and sufficient funding system
- Increase Monetary Award Program (MAP) funding to \$1 billion over ten years
- Allow MAP grants to be used for year-round study
- Address the challenge of "holds" on student accounts that prevent them from completing their degrees
- Support new low-interest loan programs through the Office of the Treasurer for low-income students
- Encourage creative options for family savings through Illinois' 529 plans
- Pilot and expand shared services programs to reduce administrative costs
- Expand joint purchasing among institutions



Growth Strategies: Build a stronger financial future for individuals and institutions.

- Leverage the Illinois Innovation Network
- Establish a Business and Employer Advisory Council
- Align the state's economic development and higher ed strategies, ensuring that both address inequities
- Encourage high school graduates to stay in Illinois
- Enhance access to teacher preparation programs
- Establish a consortium of higher ed institutions to better serve the early childhood workforce
- Expand higher ed models of teaching and learning
- Strengthen the credit transfer system
- Consider the role the private vocational sector for workforce needs

Budget and Fiscal Affairs

Budget staff work with the higher education institutions and agencies to develop a [comprehensive higher education budget recommendation](#) (including operational and capital funding) for the governor and legislature. Fiscal staff also prepare several annual reports.

Fund	FY22 Recs. \$	Fund	FY22 Recs. \$	Changes from FY21
Institutional ops & grants	\$2.1 billion	SUCSS	\$1.1 million	Institutional ops & grants, +1% Public universities, 0.05% MAP , +6.3%
Public universities	\$1.16 billion	IBHE	\$3.05 million	
Community colleges	\$302.8 million	IBHE Grants	\$9.8 million	
Adult ed/CTE	\$52 million	Common App	\$1 million	
MAP (ISAC)	\$552.9 million	SURS	\$2.1 billion	
College Illinois!	\$30 million	General Funds	\$1.88 billion	IBHE also issues several annual reports that can be found here.
IMSA	\$18.9 million	State Pension Funds	\$218 million	

Academic Affairs and Program Review

The board develops and implements academic policies for Illinois higher education by reviewing/authorizing new postsecondary programs and institutions. Academic affairs staff also lead/participate in a variety of state and national higher education initiatives. Staff also administer the [IBHE student complaint system](#), serving all Illinois students.

In FY21 there were **206 degree-granting institutions** in Illinois. The degree-granting unit oversaw **18 new degree programs** at public universities, **20** at community colleges, and **19** at private institutions; **one new institute, department, or school** at public universities; **six new authorizations** for operating authority. Staff manage the state's participation in the State Authorization Reciprocity Agreement (SARA) and authorized **89 institutions** through the annual permitting process for distance education. Staff processed **175 transcript requests**.

In FY21 there were **259 private business and vocational schools** in Illinois. The private business and vocational schools unit approved **102 new programs of study**, **12 new permits**, and **184 renewals** of annual operating permits. Staff processed **769 transcript requests**.

Staff also dealt with consumer protection matters including processing **106 student complaints** and closing **84 complaints**.

In FY21 academic affairs staff were involved with:

- [Academic program review of low-producing programs](#)
- Initiatives to support students and institutions during the course of the pandemic ([higher ed COVID-19 guidance](#); pass/fail, transfer, and licensure guidance; P-20 Council Learning Renewal Guide)
- High school to college transition
 - [Dual Credit Authorization and Compliance](#)
 - [Advanced Placement Exams](#)
 - [International Baccalaureate Courses](#)
 - Common App Launch at All Public Universities
 - Illinois Postsecondary Workforce Readiness Act
- College student access and success
 - Transfer (Illinois Articulation Initiative, SJR 22 – review of progress, and transfer affordability guarantee)
 - Educator and school leader preparation, including early childhood education
 - Career pathways and workforce development initiatives (shorter-term credential programs and stackable credentials)
 - Developmental education reform
 - Multi-state collaborative on military credit

Information Management and Research

The board has a statutory responsibility to establish a comprehensive, meaningful, and timely system of information about higher education in Illinois by collecting data from public and private institutions.

Information gathered and created in FY21 include student demographics; student-specific information on enrollment, retention, and degree completion patterns; faculty and staff information; cost to students; expenditures; and academic program cost.

IM & R staff worked with the [Illinois Higher Education Information System](#), prepared [IBHE DataPoints](#) summarizing useful contextual information on higher education in Illinois, and created a data quality dashboard to provide real-time information to colleges as they submit student-level data.

In partnership with other state agencies, IM & R staff managed a data visualization tool that highlights [transfer patterns within Illinois](#). IM & R also maintained an [interactive dashboard](#) highlighting equity and educational attainment disaggregated by county across that state and the [IllinoisCollege2Career](#) tool which provides useful information on college to workforce transitions for specific colleges and areas of study.

In an effort to bridge the digital equity gap exacerbated by COVID-19, IBHE led a statewide effort to create an interactive [drive-up Wi-Fi map](#) to help students access reliable broadband. This effort has been selected as one of three [finalists](#) for the National Association of State Chief Information Officers (NASCIO) State IT Recognition Awards in the Cross-Boundary Collaboration and Partnerships category.

Diversity and Outreach

Diversity and outreach staff work with external organizations that advocate for diversity in higher education, student veterans, and other underserved communities.

Board staff administer the [Diversifying Higher Education Faculty in Illinois](#) program, which aims to improve minority faculty representation through financial assistance. Additional duties of diversity and outreach include equal employment, annual quarterly report submissions to the Illinois Department of Human Rights, and review of adjudicated cases from public universities.

In 2021 IBHE issued the Illinois Employment Plans for Public Universities: [African American](#), [Asian American](#), [Hispanic](#), and [Native American](#).

Task Force/Committees:

- Employment and Economic Opportunity for Persons with Disabilities Task Force (EEOPD)
- Illinois Committee on Black Concerns in Higher Education (ICBCHE)
- Illinois Latino Council on Higher Education (ILACHE)
- Student Advisory Committee
- Illinois Terrorism Task Force (ITTF)/Campus Security
- Disability Services Advisory Committee

External and Legislative Relations

The board and staff analyze legislation, respond to inquiries from legislators, meet with higher education committees, and coordinate activities with legislative liaisons from other higher education agencies, institutions, and organizations.

IBHE engaged with legislators on the creation of the Strategic Plan. The board responded to media requests, communicated updates to partners and the public, and coordinated information between institutions and state government on the effects and responses to the COVID-19 pandemic.

Board Members, Committees, and Meetings

The board is comprised of 16 members. A variety of committees advise and advance the board's work. The board holds four meetings each year with occasional special meetings as needed.

Student board members are selected by the IBHE Student Advisory Committee; all others are appointed by the governor.

FY21 Board Members

John Atkinson, Chair
 Veronica Herrero, Vice-Chair and Public Member
 Max Coffey, Public Member
 Derek Douglas, Public Member
 Andrea Evans, Public Member
 Jennifer Garrison, Public Member
 Veronica Gloria, Public Member
 Alice Marie Jacobs, Public Member
 Pranav G. Kothari, Public Member
 Kenneth Shaw, Public Member
 Jennifer Delaney, Public University Faculty Representative
 Clarence Wyatt, Representative for Independent Institutions
 Teresa Garate, *ex officio*, ICCB
 Eric Zarnikow, *ex officio*, ISAC
Terms Ended in FY21
 Mackenzi Matthews, Student Member
 Maria Cruz, Non-Traditional Member

Advisory Committees and Chairs

Community College Presidents, Sylvia Jenkins
 Disabilities Advisory Committee,
 Angela Szczepanik-Sanchez
Faculty Advisory Council, Shawn Schumacher
Private University Presidents, Dave Tretter
 Proprietary Advisory Committee, Jeremy Oberfeld
 Public University Presidents and Chancellors, Larry Dietz
 Student Advisory Committee, Carl Frasor

FY21 Board Meetings

August 4	December 18	March 9
September 15	January 13	June 8

Strategic Planning Meetings

September 15	December 8	April 14
October 26	February 23	June 15

All meetings are conducted in accordance with the Open Meetings Act [5 ILCS 120].

Due to the COVID-19 pandemic, all meetings in FY21 were held via videoconference and telephone, as permitted by Public Act 101-0640 (enacted June 12, 2020) and the Governor's Emergency Proclamations and Executive Orders.

IBHE Staff and Organization Chart

IBHE staff support the board and execute its direction.

At the end of FY21, IBHE had 32 employees.

