

ILLINOIS BOARD OF HIGHER EDUCATION
ANNUAL REPORT
JULY 1, 2021 TO JUNE 30, 2022



January 2023

ILLINOIS BOARD OF HIGHER EDUCATION

Members

John Atkinson, Chair, Burr Ridge
Jennifer Delaney, Champaign
Andrea Evans, Chicago
Jennifer Garrison, Vandalia
Veronica Gloria, Joliet
Veronica Herrero, Chicago
Pranav Kothari, Chicago
Kenneth Shaw, Chicago
Clarence Wyatt, Monmouth
Rashawn (Isaiah) Overton, Student Board Member
Emmanuel Segbedzi, Nontraditional Student Board Member
Lazaro Lopez, Ex Officio Representative, Illinois Community College Board
Kevin Huber, Ex Officio Representative, Illinois Student Assistance Commission

AGENCY

Illinois Board of Higher Education
1 N. Old State Capitol Plaza
Suite 333
Springfield, Illinois 62701-1377
217.782.2551
TTY 888.261.2881
FAX 217.782.8548
www.ibhe.org




Printed by Authority
of the State of Illinois
1/23 – 6c
Printed on Recycled Paper

ABOUT THE ILLINOIS BOARD OF HIGHER EDUCATION

IBHE is responsible for planning and coordinating the state's system of higher education in five major areas: strategic planning; program approval and operating authority; higher education budget; data analysis and research; and grants administration.

A THRIVING ILLINOIS

IBHE developed, in partnership with the Illinois Community College Board and the Illinois Student Assistance Commission, a new strategic plan for higher education, [A Thriving Illinois: Higher Education Paths to Equity, Sustainability, and Growth](#), the first plan in over 10 years. The plan outlines 25 strategies designed to achieve a thriving Illinois, one which has an inclusive economy with broad prosperity and equitable paths to opportunity for all, especially those facing the greatest barriers:


-  **EQUITY:** Close equity gaps for students who have historically been left behind.
-  **SUSTAINABILITY:** Build a stronger financial future for individuals and institutions.
-  **GROWTH:** Increase talent and innovation to drive economic growth.

The Plan was approved by the IBHE in June 2021 and endorsed by the Illinois Community College Board and the Illinois Student Assistance Commission in Fall 2021. A number of *A Thriving Illinois* strategies have launched and are described below.



GOVERNOR'S EMERGENCY EDUCATION RELIEF FUND I


The Governor allocated nearly half of the state share of the federal the Governor's Emergency Education Relief Fund (GEER) to higher education. IBHE awarded funds to 20 institutions for services for enrollment and retention of low-income students, students of color, rural students and working adult students most impacted by the pandemic. GEER I included \$35 million in formula grants for the public universities and competitive grants for private institutions. The funds were used by institutions to support distance learning and remote education, provide mental health services and supports, and provide financial aid grants for 14,515 students, among other things.

-  **EQUITY** *Equity Strategy 1: Support the ongoing learning renewal of students and systemic implementation of evidence-informed student support practices.*

ILLINOIS TUTORING INITIATIVE

IBHE and ISBE partnered with ISU to launch the Illinois Tutoring Initiative, supported with federal funds. Through this effort, we partnered with four public universities and two community colleges to address learning recovery at high-need school districts by offering high-impact tutoring for students. Tutors are teacher education students, other college students, and community partners. In the first year of the program, seven college and universities recruited, trained, and matched 490 tutors to provide high-impact tutoring to 1,270 students in 45 school districts statewide. The program is ongoing with Illinois State University providing overall coordination for the initiative. The other six participating institutions in the initiative are: Governors State University, Illinois Central College, Northern Illinois University, Southeastern Illinois College, Southern Illinois University Carbondale, and Southern Illinois University Edwardsville.



-  **EQUITY** *Equity Strategy 1: Support the ongoing learning renewal of students and systemic implementation of evidence-informed student support practices.*

EQUITY INITIATIVES

In addition to the specific work on the strategies in *A Thriving Illinois*, IBHE centered equity in every decision.

IBHE Grant programs were redesigned with an equity lens, including the [College Work Study program](#); the [Nursing School grants](#); and the [Nurse Educator Fellowships](#).



IBHE revised its approval process for academic degrees and instruction to incorporate equity. New applications require institutions to document plans and strategies to close equity gaps and address affordability.

IBHE's omnibus bill, Senate Bill 5464, signed into law by the governor in June 2022 requires state public universities and community colleges to develop and implement Equity Plans to reduce the disparities for underrepresented students, faculty, and staff on their campuses.


IBHE made deepening understanding and commitment to equity core to University Trustee training. IBHE provides [annual training for public university trustees](#) that fulfills their statutory training requirements. We shifted this training to focus on trustees' role in understanding and closing equity gaps, along with the mandatory training topics.

 **EQUITY** *Close the equity gaps for students who have been left behind.*

COMMISSION ON EQUITABLE PUBLIC UNIVERSITY FUNDING


IBHE launched the Commission on Equitable Public University Funding to develop an equity-based public university funding formula. The [Commission](#) is co-chaired by the IBHE Board Chair, the Deputy Governor for Education, the Senate Majority Leader, and Representative Carol Ammons. It launched in November 2021, with its recommendations due July 1, 2023.

ILLINOIS COMMISSION ON
EQUITABLE PUBLIC UNIVERSITY FUNDING

 **SUSTAINABILITY** *Sustainability Strategy 1: Invest in public higher education through an equitable, stable, and sufficient funding system.*

FY 2023 BUDGET

For the second year, IBHE made budget recommendations that reflected an equitable distribution of funds and invested dollars in the strategies outlined in *A Thriving Illinois*. The governor's budget supported many of these recommendations and ultimately, Fiscal Year (FY) 2023 was a historic higher education budget of \$2.24 billion – a \$248.5 million increase from the prior year and the largest increase in over 20 years. Among the highlights in the FY 2023 state budget were a \$122 million increase in the state's need-based student grant program, Monetary Award Program (MAP), a \$54.8 million increase in funding for public universities, and a \$13.2 million increase in funding for community colleges that started in Fiscal Year 2022 and continued into FY 2023. Additionally, the budget included an increase of \$2.3 million for the Minority Teachers of Illinois (MTI) scholarship to attract more teaching candidates of color to high-need schools and an increase of \$535,000 for the Diversifying Faculty Initiative to increase minority faculty.

 **SUSTAINABILITY** *Sustainability Strategy: Build a stronger financial future for individuals and institutions.*

BEHAVIORAL HEALTH WORKFORCE CENTER

IBHE partnered with DHS to develop the Behavioral Health Workforce Center. Through this effort, IBHE and DHS selected the Southern Illinois University School of Medicine and the University of Illinois-Chicago to serve as hubs of a broader institutional effort to dramatically increase the behavioral health workforce and address the statewide shortage in behavioral health workers. This effort was launched as a result of [P.A. 102-004](#), the Legislative Black Caucus health care pillar and ties to the *A Thriving Illinois* goal to ensure Illinois has the talent needed to drive economic growth.



GROWTH

Growth Strategy 3: *Align the state's economic development and higher education strategies, ensuring both address historic inequities.*

COMMON APP

IBHE launched the Common App in partnership with public universities.

Illinois became only the second state with all of its public universities using the Common App, a statewide single application that allows students to apply to one or many schools using the application. In addition to smoothing students' paths to colleges, IBHE's analysis of data will help create a better picture of students' paths to college. In the first year of this partnership, more than 14,000 enrollment applications were submitted to Illinois' public universities.



GROWTH

Growth Strategy 4: *Encourage high school graduates to enroll in our higher education system and keep talent in Illinois.*

EARLY CHILDHOOD ACCESS CONSORTIUM FOR EQUITY

IBHE launched an early childhood workforce higher education consortium. Through the strategic planning process, IBHE led a work group that ultimately developed the state's first statewide higher education consortium, designed to streamline, coordinate, and improve access to credentials and degree completion for the incumbent early childhood workforce. The [Early Child Access Consortium for Equity](#) was ultimately enacted in legislation that passed both chambers unanimously and was signed into law by Governor Pritzker in July, 2021 as [Public Act 102-0174](#). The Consortium, led by the IBHE and the Illinois Community College Board, is supported by \$200M in federal funds through the Illinois Department of Human Services for student scholarships and other student supports and to higher education institutions to implement programs designed to meet the needs of working adults. In addition to IDHS, partners include Illinois Student Assistance Commission, Illinois State Board of Education, and Governor's Office of Early Childhood Development. The Consortium established goals, began enrolling students, and awarded approximately \$5.7M in scholarships to 412 students in the first year of operation.



ECACE
EARLY CHILDHOOD ACCESS
CONSORTIUM FOR EQUITY



GROWTH

Growth Strategy 5: *Establish a consortium of community colleges and universities to better serve the incumbent early childhood workforce.*

TRANSFER AFFORDABILITY GUARANTEE

IBHE and ICCB joined a three-state pilot to establish a **Transfer Affordability Guarantee**, a fixed price and time-to-degree bachelor’s program, with students starting at community college and transferring to a public university in pre-defined academic pathway. IBHE and ICCB are working with 3 public universities and 5 associated community colleges. This builds on Illinois’ extensive work on transfers that have made Illinois’ transfer system is #1 in the country for success rates of transfer students.



Growth Strategy 8: Strengthen the statewide, coordinated transfer system to ensure students have seamless paths to build on previous academic learning and earn postsecondary credentials.

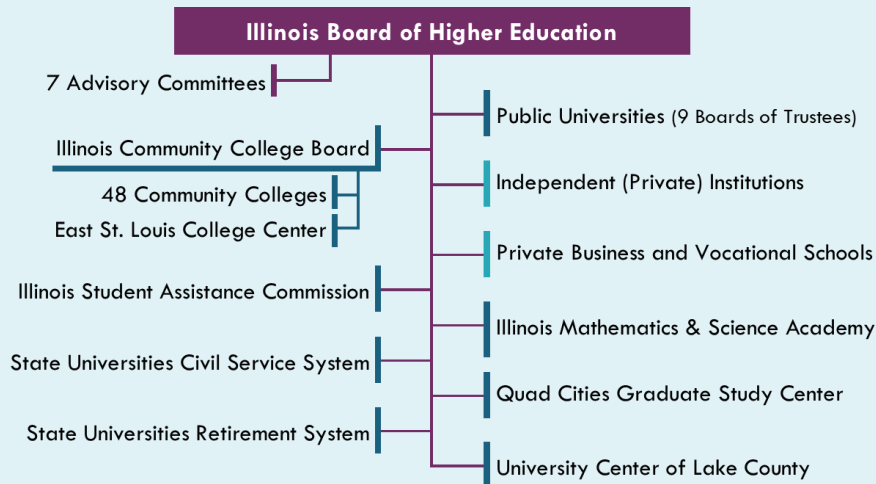
DATA ACCESS

IBHE expanded access to [equity data and analysis](#), launched interactive data tools on our website that assist stakeholders in learning about higher education outcomes including attainment, [success of transfer students](#), [institutional profiles](#) that include outcomes by race/ethnicity, attainment, [equity maps](#), and the [Illinois College 2 Career](#) tool.



STRUCTURE OF HIGHER EDUCATION IN ILLINOIS

IBHE makes budget recommendations and grants operating authority and program approval for public higher education agencies and organizations and private institutions.



Legend: purple is IBHE, blue denotes a public entity with a separate governing board, and aqua indicates private institutions under IBHE authority.