

ILLINOIS BOARD OF HIGHER EDUCATION  
**ANNUAL REPORT**  
JULY 1, 2022 TO JUNE 30, 2023



January 2024

## ILLINOIS BOARD OF HIGHER EDUCATION

### **Members**

Pranav Kothari, Chicago, Chair

Sharon Bush, Chicago

Jennifer Delaney, Champaign

Andrea Evans, Chicago

Jennifer Garrison, Vandalia

Veronica Herrero, Chicago

Kenneth Shaw, Chicago

Garth Walker, Chicago

Clarence Wyatt, Monmouth

Sam Majka, Student Board Member

Magnus Noble, Nontraditional Student Board Member

Sylvia Jenkins, Ex Officio Representative, Illinois Community College Board

Eric Zarnikow, Ex Officio Representative, Illinois Student Assistance Commission

### **AGENCY**

Illinois Board of Higher Education

1 N. Old State Capitol Plaza

Suite 333

Springfield, Illinois 62701-1377

217.782.2551

TTY 888.261.2881

FAX 217.782.8548

[www.ibhe.org](http://www.ibhe.org)




Printed by Authority  
of the State of Illinois  
1/24 – 6c  
*Printed on Recycled Paper*

## ABOUT THE ILLINOIS BOARD OF HIGHER EDUCATION

IBHE is responsible for planning and coordinating the state's system of higher education in five major areas: strategic planning; program approval and operating authority; higher education budget; data analysis and research; and grants administration.

## A THRIVING ILLINOIS

IBHE launched, in partnership with the Illinois Community College Board and the Illinois Student Assistance Commission, the higher education strategic plan, [A Thriving Illinois: Higher Education Paths to Equity, Sustainability, and Growth](#). The plan outlines 25 strategies designed to achieve a thriving Illinois, one which has an inclusive economy with broad prosperity and equitable paths to opportunity for all, especially those facing the greatest barriers:


-  **EQUITY:** Close equity gaps for students who have historically been left behind.
-  **SUSTAINABILITY:** Build a stronger financial future for individuals and institutions.
-  **GROWTH:** Increase talent and innovation to drive economic growth.

The Plan was approved by the IBHE in June 2021 and endorsed by the Illinois Community College Board and the Illinois Student Assistance Commission in Fall 2021. A number of *A Thriving Illinois* strategies have launched and are described below.



## GOVERNOR'S EMERGENCY EDUCATION RELIEF FUND II


The Governor allocated nearly half of the state share of the federal the Governor's Emergency Education Relief Fund (GEER) to higher education. In the second round of GEER, the IBHE awarded funds to 21 institutions of higher education for services for enrollment and retention of low-income students, students of color, rural students and working adult students most impacted by the pandemic. IBHE's portion of GEER II included \$11.8 million of which \$9.6 million were distributed in formula grants to the public universities and competitive grants for private institutions. The funds were used by institutions to provide mental health services and supports, improve the accessibility of academic advising and counseling resources, and enhance the quality of learning through digital tools and educator professional development, among other things.

-  **EQUITY** *Equity Strategy 1: Support the ongoing learning renewal of students and systemic implementation of evidence-informed student support practices.*

## ILLINOIS TUTORING INITIATIVE

IBHE and ISBE continued their learning recovery effort for students most impacted by the pandemic, the Illinois Tutoring Initiative. We partnered with four public universities and two community colleges to address learning recovery at high-need school districts by offering high-impact tutoring for students. Tutors are teacher education students, other college students, and community partners. In the 2022-2023 academic year, 649 trained tutors provided over 57,700 high-impact tutoring sessions in reading and/or math to 2,115 students in grades 3-8 in 58 school districts statewide. The impact of this initiative was highlighted in a [brief](#) released by The White House. The program is ongoing with Illinois State University providing overall coordination for the initiative. The other six participating institutions in the initiative are: Governors State University, Illinois Central College, Northern Illinois University, Southeastern Illinois College, Southern Illinois University Carbondale, and Southern Illinois University Edwardsville.



-  **EQUITY** *Equity Strategy 1: Support the ongoing learning renewal of students and systemic implementation of evidence-informed student support practices.*

## END STUDENT HOUSING INSECURITY (ESHI) GRANT

**IBHE established the End Student Housing Insecurity (ESHI) grant** to support institutions in addressing the systemic causes of homelessness and basic-needs insecurity among students. Nearly \$550,000 were awarded to 11 public and private non-profit institutions of higher education. The grant funds were used to support and supplement the work that was already taking place at the institutions to address the basic needs of youth in care, at-risk, or currently experiencing homelessness.



**EQUITY**

*Equity Strategy 1: Support the ongoing learning renewal of students and systemic implementation of evidence-informed student support practices.*

## BENEFITS NAVIGATORS

**IBHE brought together newly designated Benefits Navigators** from public institutions of higher education as a Community of Practice to learn from each other and to share best practices. Each public institution of higher education in Illinois is required to designate a member of staff to serve as a Benefits Navigator to help students to determine their eligibility for public benefits to address needs such as food insecurity, transportation, etc. Benefits Navigators also identify campuswide and community resource support.



**EQUITY**

*Equity Strategy 1: Support the ongoing learning renewal of students and systemic implementation of evidence-informed student support practices.*

## HOUSE LIAISONS

**IBHE convened newly identified HOUSE Liaisons** from each public institution in Illinois to provide training on how to best support homeless students. Each public institution of higher education in Illinois is required to designate a member of staff to serve as a HOUSE Liaison. The role of HOUSE Liaison aims to address the needs of homeless students on college and university campuses by serving as an advocate and resource for homeless students and improving the accessibility and affordability of on-campus housing.



**EQUITY**

*Equity Strategy 1: Support the ongoing learning renewal of students and systemic implementation of evidence-informed student support practices.*

## TASK FORCE ON CAMPUS SEXUAL MISCONDUCT CLIMATE SURVEYS

**IBHE convened the newly formed [Task Force on Campus Sexual Misconduct Climate Surveys](#).** The task force was charged with developing a base campus sexual misconduct climate survey for institutions to administer and with developing implementation guidance – like timing, content, and application of the survey. All institutions of higher education are mandated by law to annually conduct an anonymous campus sexual misconduct climate survey to assess students' experiences, outcomes regarding their experiences, and perceptions of sexual violence and collegiate culture. The task force is also charged with refining the survey over time.



**EQUITY**

*Equity Strategy 2: Establish and implement institution-level equity plans, practices to close access progression, completion, and attainment gaps.*

## EQUITY PLANS ADVISORY COMMITTEE

**IBHE convened the newly formed [Equity Plans Advisory Committee](#).** The committee was charged with providing recommendations to the IBHE and the Illinois Community College Board (ICCB) on the components, methods, practices, and strategies to be included in an Illinois Higher Education Equity Plan and Practices framework. The framework will be used by public higher education institutions to develop new and expand existing equity plans and implement practices designed to close gaps as required by law. All public

institutions of higher education are mandated to develop and submit an equity plan and implement practices that close gaps in enrollment, retention, completion, and student loan repayment rates for underrepresented groups, and all private institutions of higher education are encouraged to develop and submit such equity plans and implement such practices.



## EQUITY

**Equity Strategy 2:** Establish and implement institution-level equity plans, practices to close access progression, completion, and attainment gaps.

## COMMISSION ON EQUITABLE PUBLIC UNIVERSITY FUNDING

**IBHE continued to convene the Commission on Equitable Public University Funding to develop an equity-based public university funding formula.** The [Commission](#) is co-

chaired by the IBHE Board Chair, the Deputy Governor for Education, the Senate Majority Leader, and Representative Carol Ammons. It launched in November 2021 with its recommendations expected to be delivered to the Illinois General Assembly in 2024.

ILLINOIS COMMISSION ON  
EQUITABLE PUBLIC UNIVERSITY FUNDING



## SUSTAINABILITY

**Sustainability Strategy 1:** Invest in public higher education through an equitable, stable, and sufficient funding system.

## FISCAL YEAR 2024 BUDGET

For the third consecutive year, the IBHE made budget recommendations that reflected an equitable distribution of funds and invested dollars in the strategies outlined in *A Thriving Illinois*. The governor's budget supported many of these recommendations and ultimately, Fiscal Year (FY) 2024 was another historic higher education budget of \$2.53 billion – a \$279 million increase from the prior year and the largest increase in over 20 years. Among the highlights in the FY 2024 state budget were a \$100 million increase in the state's need-based student grant program, Monetary Award Program (MAP), a \$80.5 million (7%) increase in funding for public universities, and a \$19.4 million (7%) increase in funding for community colleges. Additionally, the budget included an appropriation of \$12.6 million for student mental health supports and an increase of \$3.8 million for the Minority Teachers of Illinois (MTI) scholarship to attract more teaching candidates of color to high-need schools.



## SUSTAINABILITY

**Sustainability Strategy:** Build a stronger financial future for individuals and institutions.

## BEHAVIORAL HEALTH WORKFORCE CENTER

**IBHE and IDHS continue to develop the Behavioral Health Workforce Center.** Through this effort, IBHE and the Illinois Department of Human Services (IDHS) selected the Southern Illinois University School of Medicine and the University of Illinois-Chicago to serve as hubs of a broader institutional effort to dramatically increase the behavioral health workforce and address the statewide shortage in behavioral health workers. The first year of the center's operation focused on foundational and operational activities crucial to its success. A team of behavioral health and workforce experts around the state are working collaboratively to improve the recruitment, training, continuing education, retention, diversification, and advancement of the behavioral health workforce.



**BHWC**  
BEHAVIORAL HEALTH  
WORKFORCE CENTER



## GROWTH

**Growth Strategy 3:** Align the state's economic development and higher education strategies, ensuring both address historic inequities.

## COMMON APP

**IBHE saw increased use of the Common App in its second year of partnership with Illinois public institutions.** Illinois became only the second state with all of its public universities using the Common App, a statewide single application that allows students to apply to one or many schools using the application. For the 2022-23 academic year, the second year of the partnership, Illinois public universities received 166,385 total applications through the Common App from 107,443 individual high school students. More than 106,000 of those applications submitted were from Illinois high school students, representing 64% of all Common App volume. The remaining applications were from out-of-state and international high school students.



**Growth Strategy 4:** Encourage high school graduates to enroll in our higher education system and keep talent in Illinois.

## EARLY CHILDHOOD ACCESS CONSORTIUM FOR EQUITY

**IBHE co-leads the ECACE Initiative, a Consortium of higher education institutions collectively supporting the upskilling of the early childhood workforce.** Through the strategic planning process, IBHE led a work group that ultimately developed the state's first statewide higher education consortium, designed to streamline, coordinate, and improve access to credentials and degree completion for the incumbent early childhood workforce. The [Early Child Access Consortium for Equity](#) was enacted in legislation was signed into law by Governor Pritzker in July, 2021 as [Public Act 102-0174](#). The ECACE Initiative, led by the IBHE and the Illinois Community College Board, comprises 62 colleges and universities, five state agencies, and 16 community-based organizations. The initiative is supported by \$200M in federal funds through the Illinois Department of Human Services for student scholarships and other student supports and to higher education institutions to implement programs designed to meet the needs of working adults. In addition to IDHS, partners include Illinois Student Assistance Commission and the Illinois State Board of Education. In academic year 2022 – 2023, the ECACE Scholarship awarded approximately \$29.6M in scholarships to 2,137 students in the first full year of operation. Higher Education navigators sent 79,263 emails, made 7,720 phone calls, and held 1,209 information sessions to engage the early childhood workforce. Colleges and universities held 1,725 outreach and recruiting events that drew 26,305 participants and engaged with 6,016 employers. Additionally, mentors at all Consortium institutions supported students to enroll, persist, and complete through the provision of wrap around supports.



**Growth Strategy 5:** Establish a consortium of community colleges and universities to better serve the incumbent early childhood workforce.

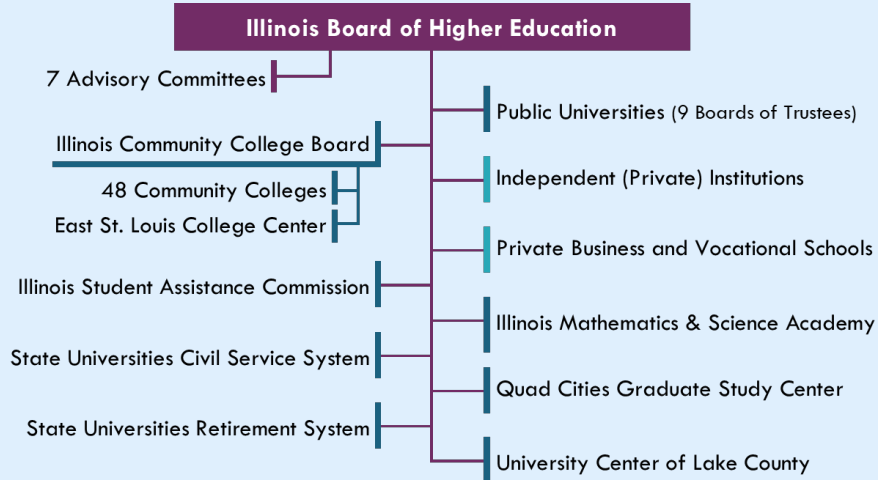
## DATA ACCESS

**IBHE continued to expand access to [equity data and analysis](#)** by updating interactive tools on our website that assist stakeholders in learning about higher education outcomes and attainment, [success of transfer students](#), [institutional profiles](#) that include outcomes by race/ethnicity, attainment, [equity maps](#), and the [Illinois College2Career](#) and [Academic Majors Report](#) tool.



## STRUCTURE OF HIGHER EDUCATION IN ILLINOIS

IBHE makes budget recommendations and grants operating authority and program approval for public higher education agencies and organizations and private institutions.



Legend: purple is IBHE, blue denotes a public entity with a separate governing board, and aqua indicates private institutions under IBHE authority.