



ILLINOIS BOARD OF HIGHER EDUCATION

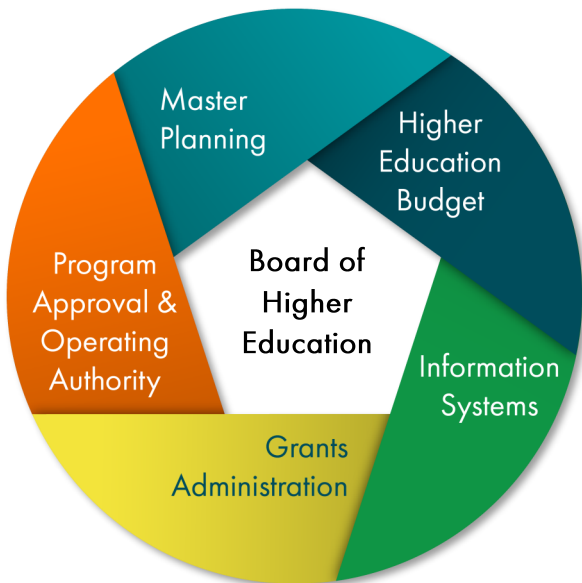
Annual Report
July 1, 2018 to June 30, 2019

JB Pritzker | Governor

John Atkinson | Board Chair

Mission

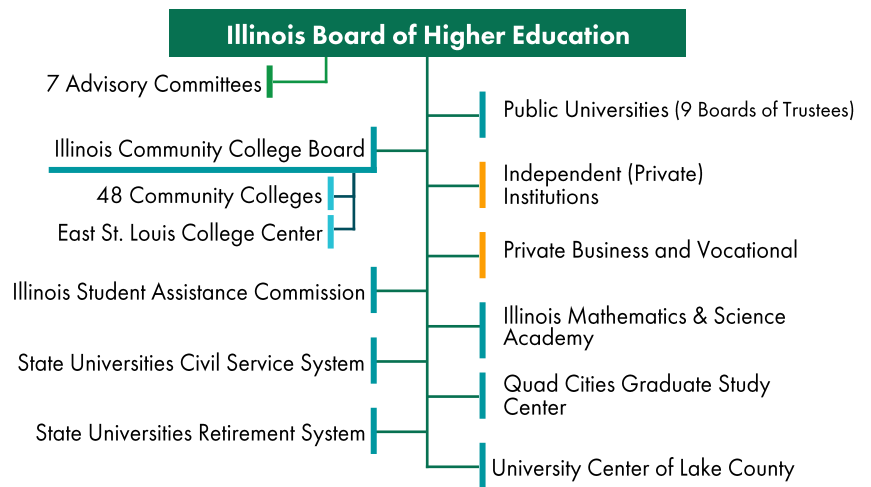
IBHE is responsible for planning and coordinating the state's system of higher education in five major areas:



Structure of Higher Education in Illinois

IBHE makes budget recommendations and grants operating authority and program approval for public higher education agencies and organizations and private institutions.

Legend: green is IBHE, blue denotes a public entity with a separate governing board, and orange indicates private institutions under IBHE authority.



Master Planning and Policy Development

IBHE carries out its planning and policy responsibilities in a variety of ways, including ad hoc study committees, special task forces, staff initiatives, and more.

IBHE plans to initiate strategic planning commensurate with a new administration that focuses on equity, affordability, attainment, and workforce development. In 2008 the board approved the *Illinois Public Agenda for College and Career Success* and in 2013 commissioned a midpoint report, "*The Public Agenda: 5 Years Later.*" The midpoint report identified four key areas for improvement – affordability, gaps for underserved students, adult degree completion, and IBHE's role as education advocate.

External and Legislative Relations

The board and staff analyze legislation, respond to inquiries from legislators, meet with higher education committees, and coordinate activities with legislative liaisons from other higher education agencies, institutions, and organizations.

FY19 legislative initiatives enacted include: P.A. 101-180 – grants IBHE an additional 30 days for issuing the annual universities revenues and expenditures report; [P.A. 101-354](#) – reduces the number of members on IBHE's Diversifying Higher Education Faculty board from 21 to 11. Other bills impacting IBHE: [P.A. 101-251](#) – requires IBHE to develop a Technical Assistance Center to assist universities and community colleges with the implementation and operation of the Mental Health Early Action on Campus Act; [P.A. 101-93](#) – makes changes to the annual tuition and fee report issued by IBHE to include tuition assistance levels.

The board responded to media requests and communicated updates to partners and the public. External relations staff also support IBHE's Student Advisory Committee.

Academic Affairs and Program Review

The board develops and implements academic policies for Illinois higher education by reviewing/authorizing new postsecondary programs and institutions. Academic affairs staff also lead/participate in a variety of state and national higher education initiatives. Staff also administer the [IBHE student complaint system](#), serving all Illinois students.

In FY19 there were **209 degree-granting institutions** in Illinois. The degree-granting unit oversaw **21 new degree programs** at public universities, **13** at community colleges, and **149** at private institutions; **3 new institutes, departments, or schools** at public universities; **3 new authorizations** for operating authority; and **181 transcript requests**.

In FY19 there were **243 private business and vocational schools** in Illinois. The private business and vocational schools unit approved **94 new programs of study**, **128 new permits**, and **133 renewals** and processed **948 transcript requests**.

Staff also received **233** student complaints and closed **88** complaints.

In FY19 academic affairs staff were involved with:

- [Illinois Articulation Initiative](#) and [Distance Education](#)
- Complete College America's Co-requisite at Scale Initiative
- Multi-State Collaborative on Military Credit
- Illinois Postsecondary Workforce Readiness Act
- Educator and school leader preparation
- [State Authorization Reciprocity Agreement \(SARA\)](#)
- [Academic program review of low-producing programs](#)
- [Dual Credit Authorization and Compliance](#)
- [Advanced Placement Exams](#)
- [International Baccalaureate Courses](#)

Additional activities include high school to college transition and dual credit, Illinois learning standards, career pathways, completion initiatives, stackable credentials, competency-based education, and workforce development initiatives.

Budget and Fiscal Affairs

Budget staff work with the higher education institutions and agencies to develop a [comprehensive higher education budget recommendation](#) (including operational and capital funding) for the governor and legislature. Fiscal staff also prepare several annual reports.

In FY19, **\$1.894 billion** was appropriated from general funds for higher educational institutional operations and grants. The Illinois public universities received **\$1.1 billion**, community colleges **\$268 million**, adult education/postsecondary career and technical education programs **\$51.3 million**, Illinois Student Assistance Commission **\$439 million** (which includes funding for the Monetary Award Program), the Illinois Math and Science Academy **\$18.4 million**; the State Universities Civil Service System **\$1.1 million**; IBHE **\$2.8 million**; and IBHE institutional grants and special Initiatives **\$7.3 million**. In addition, the State University Retirement System received **\$1.37 billion** from general funds and **\$215 million** from the state pension fund.

IBHE issued the following annual reports for FY19:

- [Higher Education Veterans Service Act](#)
- [Public University Tuition and Fee Waivers](#)
- [Revenues and Expenditures](#)
- [Compensable Sick Leave](#)

Diversity and Outreach

Diversity and outreach staff work with external organizations that advocate for diversity in higher education, student veterans, and other underserved communities.

Board staff provided administrative support for the [Diversifying Higher Education Faculty in Illinois](#) program, which aims to improve minority faculty representation through financial assistance. Additional duties of diversity and outreach include equal employment , annual quarterly report submissions to the Illinois Department of Human Rights, and review of adjudicated cases from public universities.

IBHE issued the following annual reports in FY19:

- [Underrepresented Groups in Illinois Higher Education](#)
- Illinois Employment Plans for Public Universities: [African American](#), [Asian American](#), and [Hispanic](#)

Task Force/Committees:

- Employment and Economic Opportunity for Persons with Disabilities Task Force (EEOPD)
- Illinois Terrorism Task Force (ITTF)/Campus Security
- Disability Services Advisory Committee

Information Management and Research

The board has a statutory responsibility to establish a comprehensive, meaningful, and timely system of information about higher education in Illinois by collecting data from public and private institutions.

Information gathered and created in FY19 include student demographics; student-specific information on enrollment, retention, and degree completion patterns; faculty and staff information; cost to students; expenditures; and academic program cost. This information is made available to the public and other constituents via reports and dynamic web applications. IM & R staff also advanced work on the Illinois Higher Education Information System fully integrating student-level information into its public reporting systems and through the development of a course assignment system specific to developmental education and dual-credit. In partnership with other state agencies, IM & R staff developed a new data visualization tool that highlights [transfer patterns within Illinois](#) and launched an update of the [IllinoisCollege2Career](#) tool which provides parents and students with useful information on the college to workforce transitions for specific colleges and areas of study. IM & R staff also prepared [IBHE DataPoints](#) summarizing useful contextual information on higher education in Illinois.

Board Members, Committees, and Meetings

The board is comprised of 16 members. A variety of committees advise and advance the board's work. The board holds four meetings each year with occasional special meetings as needed.

Student board members are selected by the IBHE Student Advisory Committee; all other members, including the chair, are appointed by the governor.

FY19 Board Members

- Tom Cross, Chair*
- Jane Hays, Vice-Chair and Public Member
- Jay D. Bergman, Public Member*
- Max Coffey, Public Member*
- Meredith Dow, Private Universities Representative
- Sherry Eagle, Representative of Public Universities
- Alice Marie Jacobs, Public Member*
- Cherilyn Murer, Public Member
- Santos Rivera, Public Member*
- Darlene Ruscitti, Public Member
- Jack Thomas, Public Member*
- Emily Buice, Student Member*
- Truong "Jack" Luu, Nontraditional Student Member*
- Teresa Garate, *ex officio*, ICCB*
- Eric Zarnikow, *ex officio*, ISAC*

*Denotes board members at the end of FY19

Advisory Committees and Chairs

- Community College Presidents, Lori Sundberg
- Disabilities Advisory Committee, Carrie Pierson
- Faculty Advisory Council, Marie Donovan
- Private University Presidents, Dave Tretter
- Proprietary Advisory Committee, Robert Gabriel
- Public University Presidents and Chancellors, Larry Dietz
- Student Advisory Committee, Erin Fleshren

FY19 Board Meetings

- Aug. 2** Videoconference, Springfield and Aurora
- Sept. 18 Eastern Illinois University, Charleston
- Dec. 4 Joliet Junior College
- Mar. 5 University of Illinois at Springfield
- June 4 Northern Illinois University, DeKalb

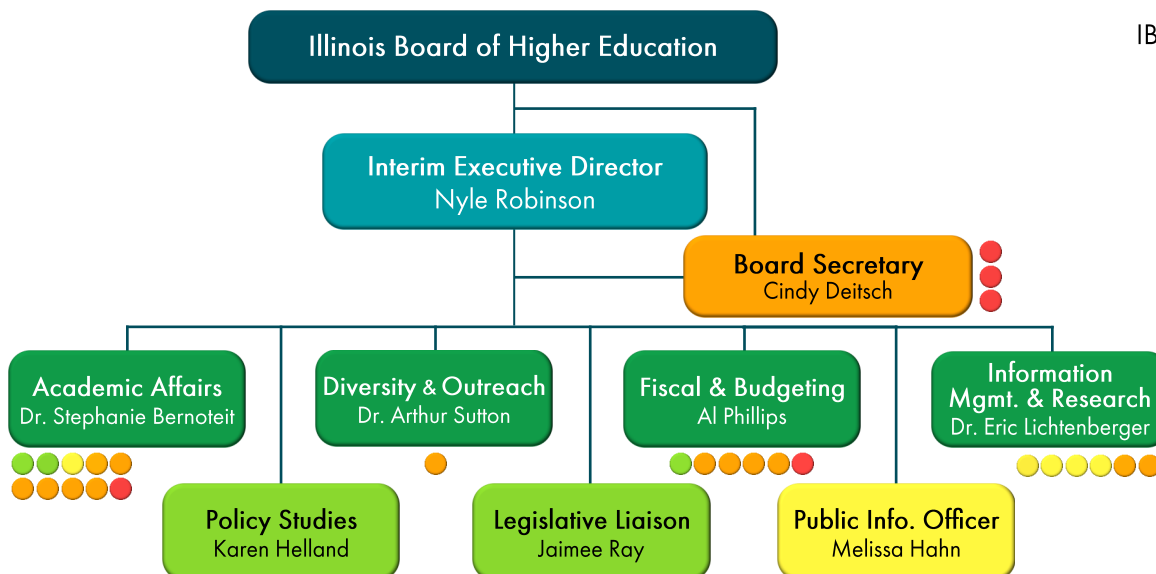
**Denotes special board meeting

All meetings are conducted in accordance with the Open Meetings Act [5 ILCS 120].

IBHE Staff

IBHE staff support the board and execute its direction.

IBHE Organizational Chart



At the end of FY19, IBHE had 32 employees.

Legend:

- Executive Director
- Deputy Director
- Senior Assoc. Dir.
- Associate Director
- Assistant Director
- Support Staff