



ILLINOIS BOARD OF HIGHER EDUCATION

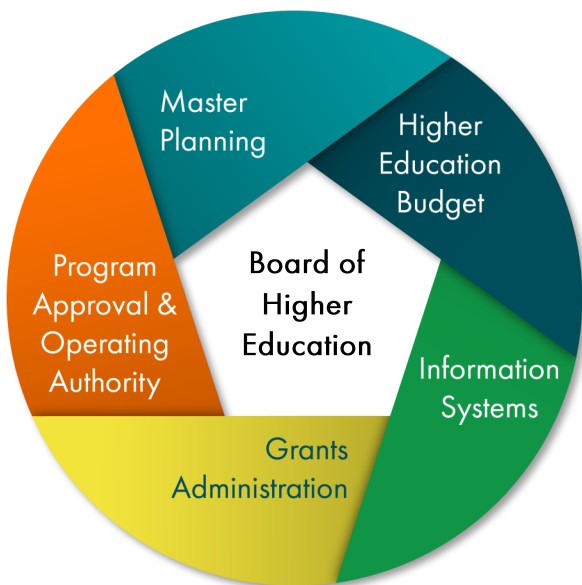
Annual Report
July 1, 2019 to June 30, 2020

JB Pritzker | Governor

John Atkinson | Board Chair

Mission

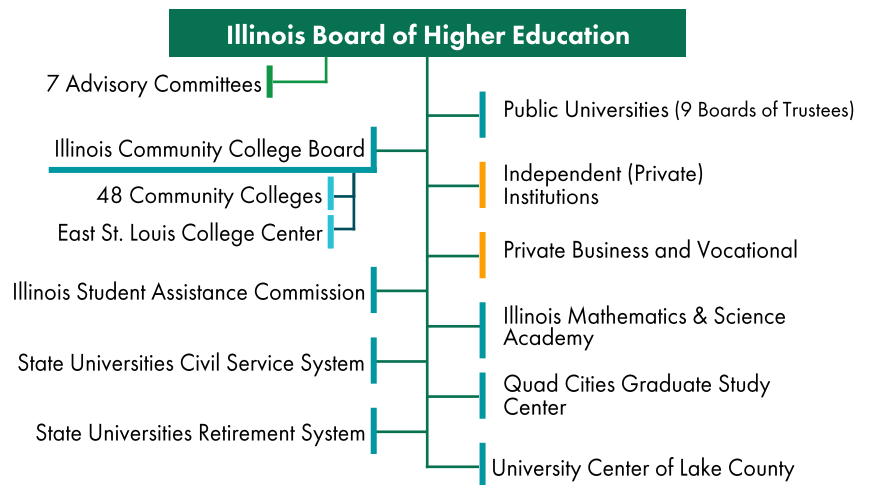
IBHE is responsible for planning and coordinating the state's system of higher education in five major areas:



Structure of Higher Education in Illinois

IBHE makes budget recommendations and grants operating authority and program approval for public higher education agencies and organizations and private institutions.

Legend: green is IBHE, blue denotes a public entity with a separate governing board, and orange indicates private institutions under IBHE authority.



Budget and Fiscal Affairs

Budget staff work with the higher education institutions and agencies to develop a [comprehensive higher education budget recommendation](#) (including operational and capital funding) for the governor and legislature. Fiscal staff also prepare several annual reports.

In FY20, **\$2.05 billion** was appropriated from general funds for higher educational institutional operations and grants. The Illinois public universities received **\$1.16 billion**, a 4.8% increase; community colleges **\$301.6 million**, a 12.4% increase and including New Transitional Math Development (\$1 million) and Competitive Grant Program (\$23,794,400); adult education/postsecondary career and technical education programs **\$53.2 million**; Illinois Student Assistance Commission **\$504.6 million** which includes funding for the Monetary Award Program (12.5% increase, \$50 million); the Illinois Math and Science Academy **\$18.9 million**; the State Universities Civil Service System **\$1.1 million**; IBHE **\$2.8 million**; and IBHE institutional grants and special Initiatives **\$8.3 million**. In addition, the State University Retirement System received **\$1.64 billion** from general funds and **\$215.0 million** from the state pension fund. FY20 saw the biggest percentage increase (8.2% overall) since at least 1990.

IBHE issues [several annual reports that can be found here](#).

Academic Affairs and Program Review

The board develops and implements academic policies for Illinois higher education by reviewing/authorizing new postsecondary programs and institutions. Academic affairs staff also lead/participate in a variety of state and national higher education initiatives. Staff also administer the [IBHE student complaint system](#), serving all Illinois students.

In FY20 there were **207 degree-granting institutions** in Illinois. The degree-granting unit oversaw **21 new degree programs** at public universities, **23** at community colleges, and **21** at private institutions; **10 new institutes, departments, or schools** at public universities; **7 new authorizations** for operating authority; and **68 transcript requests**.

In FY20 there were **252 private business and vocational schools** in Illinois. The private business and vocational schools unit approved **114 new programs of study**, **15 new permits**, and **124 renewals** and processed **824 transcript requests**.

Staff also received **121** student complaints and closed **114** complaints.

In FY20 academic affairs staff were involved with:

- [Illinois Articulation Initiative](#) and [Distance Education](#)
- Complete College America's Co-requisite at Scale Initiative
- Multi-State Collaborative on Military Credit
- Illinois Postsecondary Workforce Readiness Act
- Educator and school leader preparation
- [State Authorization Reciprocity Agreement \(SARA\)](#)
- [Academic program review of low-producing programs](#)
- [Dual Credit Authorization and Compliance](#)
- [Advanced Placement Exams](#)
- [International Baccalaureate Courses](#)

Additional activities include high school to college transition and dual credit, Illinois learning standards, career pathways, completion initiatives, stackable credentials, competency-based education, and workforce development initiatives.

External and Legislative Relations

The board and staff analyze legislation, respond to inquiries from legislators, meet with higher education committees, and coordinate activities with legislative liaisons from other higher education agencies, institutions, and organizations.

Due to the pandemic, the legislative session was abbreviated into a special four-day session. All IBHE initiatives were put on hold in order to focus on necessary legislation (i.e. budget, capital, etc.). The board responded to media requests, communicated updates to partners and the public, and coordinated information between institutions and state government on the effects and responses to the COVID-19 pandemic.

Information Management and Research

The board has a statutory responsibility to establish a comprehensive, meaningful, and timely system of information about higher education in Illinois by collecting data from public and private institutions.

Information gathered and created in FY20 include student demographics; student-specific information on enrollment, retention, and degree completion patterns; faculty and staff information; cost to students; expenditures; and academic program cost.

IM & R staff worked with the [Illinois Higher Education Information System](#), prepared [IBHE DataPoints](#) summarizing useful contextual information on higher education in Illinois, and created a data quality dashboard to provide real-time information to colleges as they submit student-level data.

In partnership with other state agencies, IM & R staff developed a new data visualization tool that highlights [transfer patterns within Illinois](#). IM & R also produced an [interactive dashboard](#) highlighting equity and educational attainment disaggregated by county across that state and launched an update of the [IllinoisCollege2Career](#) tool which provides useful information on college to workforce transitions for specific colleges and areas of study.

In an effort to bridge the digital equity gap exacerbated by COVID-19, IBHE led a statewide effort to create an interactive [drive-up Wi-Fi map](#) to help students access reliable broadband.

Diversity and Outreach

Diversity and outreach staff work with external organizations that advocate for diversity in higher education, student veterans, and other underserved communities.

Board staff administer the [Diversifying Higher Education Faculty in Illinois](#) program, which aims to improve minority faculty representation through financial assistance. Additional duties of diversity and outreach include equal employment, annual quarterly report submissions to the Illinois Department of Human Rights, and review of adjudicated cases from public universities.

IBHE issued the following annual reports in FY20: [Underrepresented Groups in Illinois Higher Education](#) and Illinois Employment Plans for Public Universities: [African American](#), [Asian American](#), and [Hispanic](#)

Task Force/Committees:

- Employment and Economic Opportunity for Persons with Disabilities Task Force (EEOPT)
- Illinois Committee on Black Concerns in Higher Education (ICBCHE)
- Illinois Terrorism Task Force (ITTF)/Campus Security
- Illinois Latino Council on Higher Education (ILACHE)
- Disability Services Advisory Committee

Strategic Planning and Policy Development

IBHE carries out its planning and policy responsibilities in a variety of ways, including ad hoc study committees, special task forces, staff initiatives, and more.

IBHE plans to initiate strategic planning that focuses on equity, affordability, attainment, and work force development. In 2008 the board approved the [Illinois Public Agenda for College and Career Success](#) and in 2013 commissioned a midpoint report, "[The Public Agenda: 5 Years Later.](#)" The midpoint report identified four key areas for improvement – affordability, gaps for underserved students, adult degree completion, and IBHE's role as education advocate.

Board Members, Committees, and Meetings

The board is comprised of 16 members. A variety of committees advise and advance the board's work. The board holds four meetings each year with occasional special meetings as needed.

Student board members are selected by the IBHE Student Advisory Committee; all others, including the chair, are appointed by the governor. In August 2019, Gov. JB Pritzker appointed several new members to the board, replacing members whose terms expired.

FY20 Board Members

- John Atkinson, Chair
- Veronica Herrero, Vice-Chair and Public Member
- Max Coffey, Public Member
- Derek Douglas, Public Member
- Andrea Evans, Public Member
- Jennifer Garrison, Public Member
- Veronica Gloria, Public Member
- Alice Marie Jacobs, Public Member
- Pranav G. Kothari, Public Member
- Kenneth Shaw, Public Member
- Jennifer Delaney, Public University Faculty Representative
- Clarence Wyatt, Representative for Independent Institutions
- Teresa Garate, *ex officio*, ICCB
- Eric Zarnikow, *ex officio*, ISAC
- Terms Ended in FY20*
- Tom Cross, Chair
- Jay D. Bergman, Public Member
- Santos Rivera, Public Member
- Jack Thomas, Public Member
- Marcus Wolfe, Sr., Student Member
- David Santafe-Zambrano, Non-Traditional Member

Advisory Committees and Chairs

- Community College Presidents, Sylvia Jenkins
- Disabilities Advisory Committee, Carrie Pierson
- Faculty Advisory Council, Marie Donovan
- Private University Presidents, Dave Tretter
- Proprietary Advisory Committee, Amy King
- Public University Presidents and Chancellors, Larry Dietz
- Student Advisory Committee, Marcus Towns

FY20 Board Meetings

- Aug. 6 Videoconference, Springfield and Aurora
- Sept. 10 Waubensee Community College, Sugar Grove
- Nov. 22 Chicago
- Dec. 10 DePaul University, Chicago
- Jan. 8 Videoconference, Springfield and Chicago
- April 30 Videoconference (due to COVID-19)
- June 9 Videoconference (due to COVID-19)

All meetings are conducted in accordance with the Open Meetings Act [5 ILCS 120].

IBHE Staff and Organization Chart

IBHE staff support the board and execute its direction.

At the end of FY20, IBHE had 33 employees.

